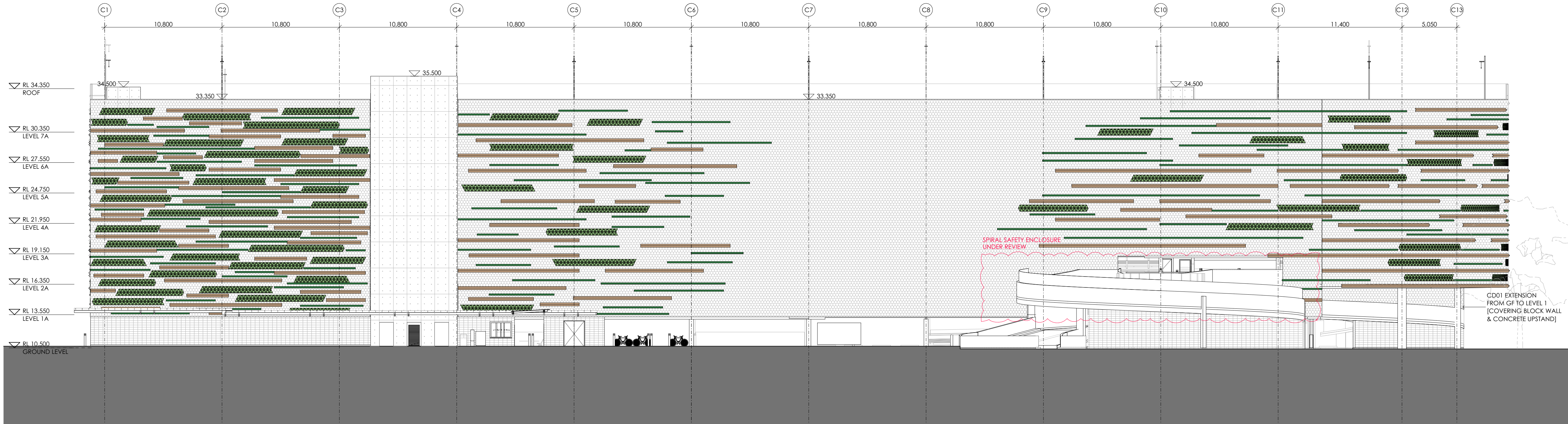


NOTES

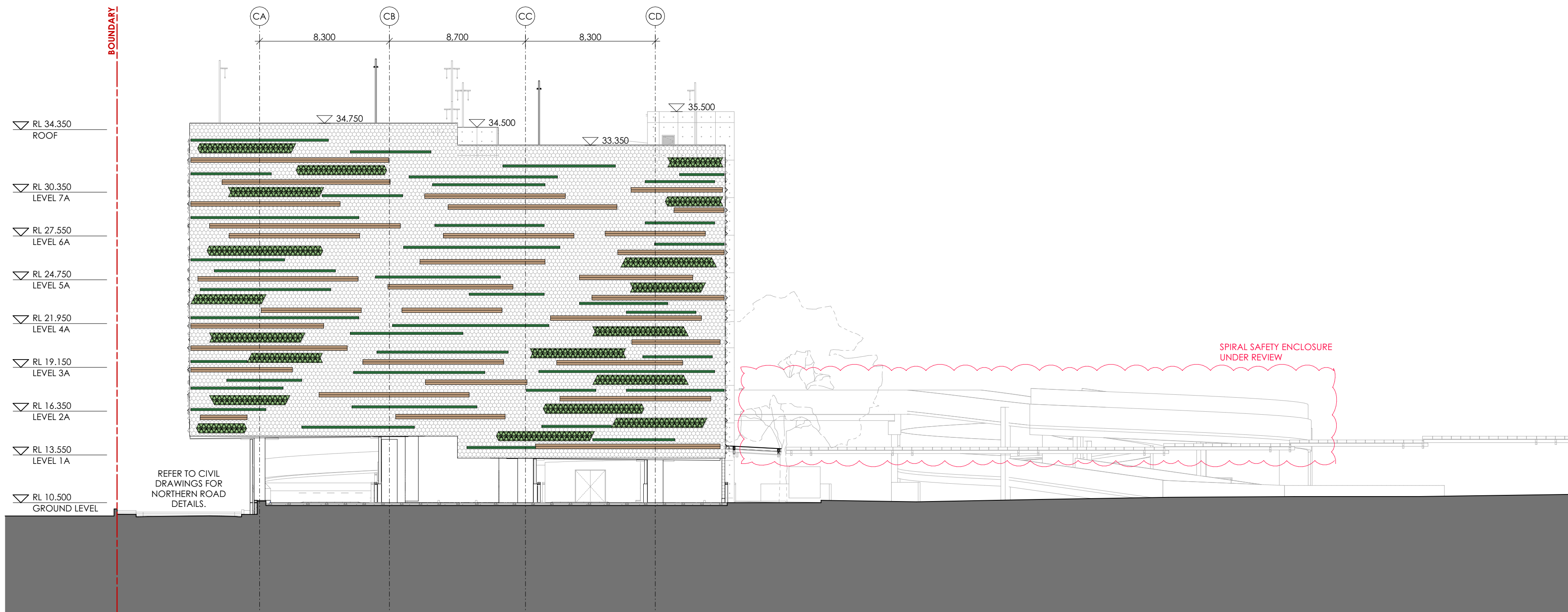
1. THIS DRAWING IS ISSUED UPON THE CONDITION IT IS NOT COPIED, REPRODUCED, REPAIRED OR DISCLOSED TO ANY UNAUTHORISED PERSON EITHER WHOLLY OR IN PART WITHOUT PRIOR CONSENT IN WRITING OF fitzpatrick+partners.
2. DRAWINGS SHOW DESIGN INTENT ONLY. SHOP DRAWINGS ARE TO BE PROVIDED FOR APPROVAL PRIOR TO CONSTRUCTION OR MANUFACTURE.
3. DO NOT SCALE DRAWINGS. CHECK DIMENSIONS BEFORE COMMENCING WORK.
4. INCONSISTENCIES ARE TO BE REPORTED TO fitzpatrick+partners.
5. NUMBERS FOLLOWING AN ABBREVIATION DENOTE A PARTICULAR TYPE OF ITEM. FOR EXPLANATION OF ITEM TYPES REFER TO SPECIFICATION AND FINISHES SCHEDULE.
6. CONSULTANT DETAILS ARE INCLUDED FOR EASE OF REFERENCE ONLY.
7. ALL DRAWINGS TO BE PRINTED IN COLOUR.

ABBREVIATIONS

COL	COLUMN	MECH	MECHANICAL
CHK	CHECK ON SITE	MIN	MINIMUM
DN	DOWNPIPE	MAX	MAXIMUM
ESC	ESCAPE	NOM	NOMINAL
EX	EXISTING	RC	RELATIVE LEVEL
FCL	FINISHED CEILING LEVEL	RWO	RAIN WATER OUTLET
FFL	FINISHED FLOOR LEVEL	SM	SIMILAR
FR	FRESHWATER	SPEC	SPECIFICATION
FRR	FIRE HOSE REEL	SSL	STRUCTURAL SLAB LEVEL
FRL	FIRE RESISTANCE LEVEL	TBC	TO BE CONFIRMED
FS	FIRE STAIR	TOW	TOP OF WALL
FW	FLOORWASH	TYP	TYPICAL
HYD	HYDRAULIC	U/S	UNDERSIDE
ENG	ENGINEERS	STRUC	STRUCTURAL
DWG	DRAWINGS + SPECS		



1 SOUTH ELEVATION
SCALE - 1:200



2 WEST ELEVATION
SCALE - 1:200

AMENDMENTS

REV.	DATE	DESCRIPTION	CHK
09	4/02/2021	FOR CONSTRUCTION	RP
08	1/12/2020	FOR COORDINATION	RP
07	23/10/2020	FOR COORDINATION 100%	RP
06	1/10/2020	FOR COORDINATION	RP
05	20/05/2020	FOR TENDER	BC
04	12/05/2020	FOR TENDER	BC
03	16/04/2020	FOR TENDER	BC
02	30/03/2020	DESIGN DEVELOPMENT	BC
01	28/02/2020	ISSUE FOR COORDINATION	BC

PROJECT

LIVERPOOL HEALTH & ACADEMIC PRECINCT

Health
NSW
Government
South Western Sydney
Local Health District
ELIZABETH STREET LIVERPOOL, NSW

CLIENT

Health
NSW
Government
Infrastructure
14/77 PACIFIC HWY, NORTH SYDNEY NSW 2060

MSCP CONTRACTOR

ADCO
LEVEL 2, 7-9 WEST STREET, NORTH SYDNEY, NSW 2060

PROJECT MANAGER

JOHNSTAFF
LEVEL 5/9 -13 CASTLEREAGH ST, SYDNEY NSW 2000

STRUCTURAL / CIVIL

TTW
Taylor
Thomson
Whitting
LEVEL 3/48 CHANDOS ST, ST LEONARDS NSW 2065

MECHANICAL / ELECTRICAL / SECURITY

Stantec
LEVEL 4/99 WALKER ST, NORTH SYDNEY NSW 2060

HYDRAULIC / FIRE

Warren
Smith &
Partners
LEVEL 9/233 CASTLEREAGH ST, SYDNEY NSW 2000

LANDSCAPE ARCHITECT

CLUSTER ASSOCIATES
65-69 KENT ST, SYDNEY NSW 2000

PROJECT NORTH

N
50mm ON ORIGINAL

FOR CONSTRUCTION

DRAWING

GENERAL ARRANGEMENT ELEVATIONS
SOUTH & WEST ELEVATIONS

DRAWN
AB

APPROVED
RP

PRINT DATE
4/02/2021

SCALE
1:200(A1)

PROJECT NO.
21807

STATUS
CONSTRUCTION DOCUMENTATION

DRAWING NO.
LHAP-AR-FPA-DRG-CP-120001

ISSUE
09

FACADE CLADDING UNDER REVIEW
PENDING ABORIGINAL ARTIST INPUT

CLADDING LEGEND

REFER TO LHAP-AR-FPA-SCH-CP-920001 FINISHES SCHEDULE
REFER TO LHAP-AR-FPA-DRG-CP-640000 DRAWING SERIES

- CD01 CLADDING TYPE 01
safety mesh (L1 to L7 only)
- CD02 CLADDING TYPE 02
anti-climb safety mesh (TBC)
- CD03 CLADDING TYPE 03
300mm triangle height aluminium panels
- CD04 CLADDING TYPE 04
200mm equal aluminium angle profiles
- CD05 CLADDING TYPE 05
100mm equal aluminium angle profiles

METALWORK NOTES

1. ALL STRUCTURAL OR LOAD BEARING METAL WORK TO STRUCTURAL ENGINEER'S APPROVAL OR PRODUCT MANUFACTURER'S SPECIFICATIONS.
2. UNO STAINLESS STEEL (S31603) GRADE TO BE UNS S31603.
3. SQUARE EDGES ARE MATERIALS TO AVOID GALVANIC CORROSION.
4. FINISHES TO STRUCTURAL ENGINEER'S APPROVAL OR PRODUCT MANUFACTURER'S SPECIFICATIONS.
5. ALL FINISHES TO BE S31603.
6. ALL POWDER COATED FINISHES TO BE CUSTOM NON-STANDARD COLOURS.