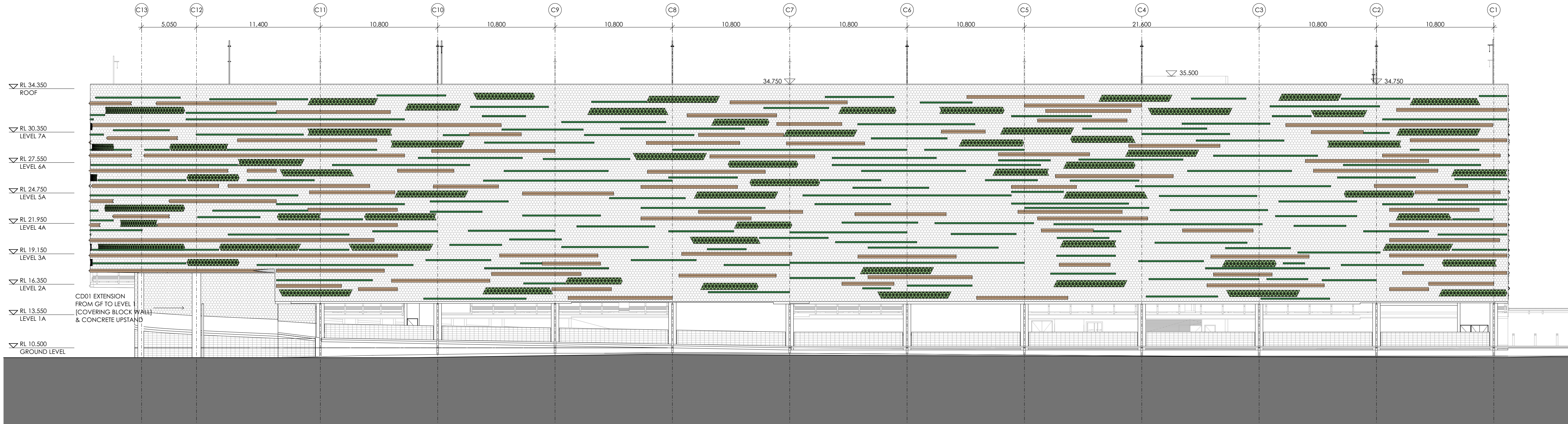


NOTES

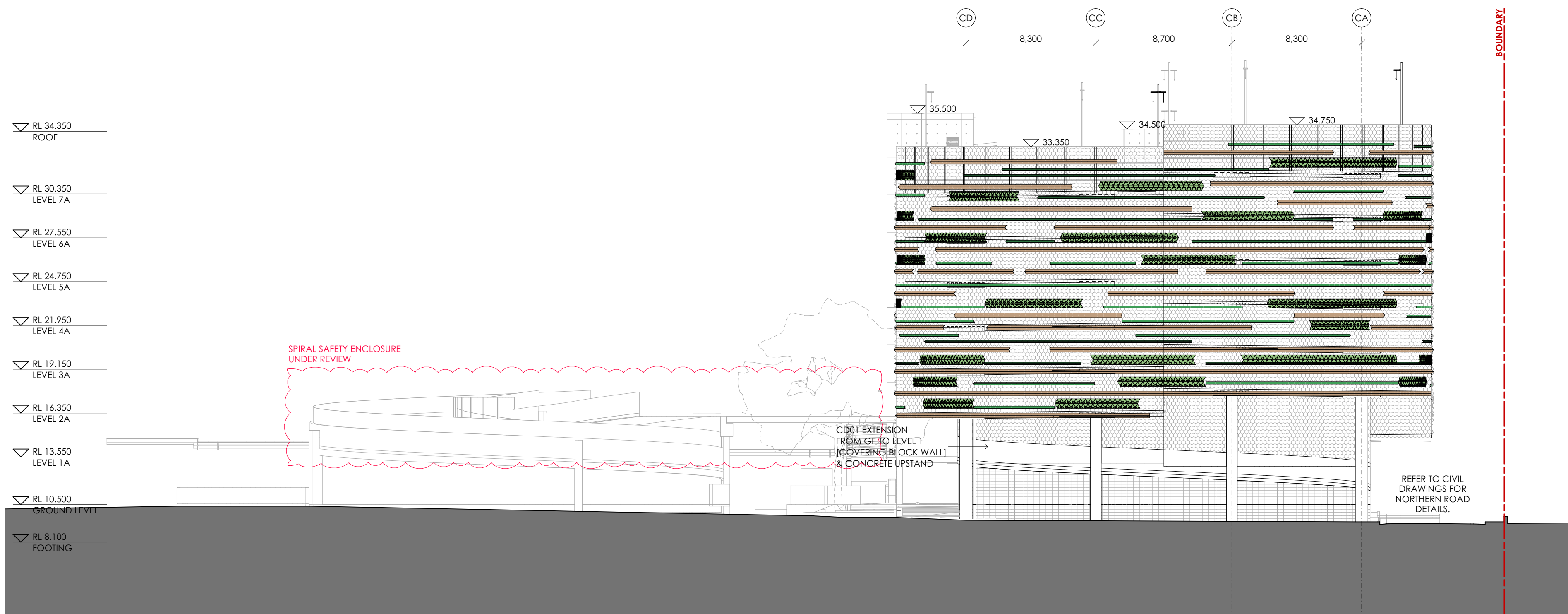
- THIS DRAWING IS ISSUED UPON THE CONDITION IT IS NOT COPIED, REPRODUCED, REPAIRED OR DISCLOSED TO ANY UNAUTHORIZED PERSON EITHER WHOLLY OR IN PART WITHOUT PRIOR CONSENT IN WRITING OF fitzpatrick+partners.
- DRAWINGS SHOW DESIGN INTENT ONLY. SHOP DRAWINGS ARE TO BE PROVIDED FOR APPROVAL PRIOR TO CONSTRUCTION OR MAINTENANCE WORK.
- DO NOT SCALE DRAWINGS. CHECK DIMENSIONS BEFORE COMMENCING WORK.
- INCONSISTENCIES ARE TO BE REPORTED TO fitzpatrick+partners.
- NUMBERS FOLLOWING AN ABBREVIATION DENOTE A PARTICULAR TYPE OF ITEM. FOR EXPLANATION OF ITEM TYPES REFER TO SPECIFICATION AND FINISHES SCHEDULE.
- CONSULTANT DETAILS ARE INCLUDED FOR EASE OF REFERENCE ONLY.
- ALL DRAWINGS TO BE PRINTED IN COLOUR.

ABBREVIATIONS

COL	COLUMN	MECH	MECHANICAL
CHK	CHECK ON SITE	MIN	MINIMUM
DN	DOWNPIPE	MAX	MAXIMUM
EL	ELEVATION	NOM	NOMINAL
EX	EXISTING	REL	RELATIVE LEVEL
FCL	FINISHED CEILING LEVEL	RWO	RAIN WATER OUTLET
FFL	FINISHED FLOOR LEVEL	SM	SMALLER
PH	FIRE HYDRANT	SPC	SPECIFICATION
RHR	FIRE HOSE REEL	SSL	STRUCTURAL SLAB LEVEL
RFL	FIRE RESISTANCE LEVEL	TBC	TO BE CONFIRMED
FS	FIRE STAR	TOW	TOP OF WALL
FW	FLOOR WASTE	TYP	TYPICAL
HYD	HYDRAULIC	U/S	UNDERSIDE
ENG	ENGINEERS	STRUC	STRUCTURAL
DWG	DRAWINGS + SPECS		



1 NORTH ELEVATION
SCALE - 1:200



2 EAST ELEVATION
SCALE - 1:200

AMENDMENTS

REV.	DATE	DESCRIPTION	CHK
09	4/02/2021	FOR CONSTRUCTION	RP
08	1/12/2020	FOR COORDINATION	RP
07	23/10/2020	FOR COORDINATION 100%	RP
06	1/10/2020	FOR COORDINATION	RP
05	20/05/2020	FOR TENDER	BC
04	12/05/2020	FOR TENDER	BC
03	16/04/2020	FOR TENDER	BC
02	30/03/2020	DESIGN DEVELOPMENT	BC
01	28/02/2020	ISSUE FOR COORDINATION	BC

PROJECT

LIVERPOOL HEALTH & ACADEMIC PRECINCT

Health
NSW
South Western Sydney
Local Health District
ELIZABETH STREET LIVERPOOL, NSW

CLIENT

Health
NSW
Infrastructure
14/77 PACIFIC HWY, NORTH SYDNEY NSW 2060

MSCP CONTRACTOR

ADCO
LEVEL 2, 7-9 WEST STREET, NORTH SYDNEY, NSW 2060

PROJECT MANAGER

JOHNSTAFF
LEVEL 5/9 -13 CASTLEREAGH ST, SYDNEY NSW 2000

STRUCTURAL / CIVIL

TTW
Taylor
Thomson
Whitting
LEVEL 3/48 CHANDOS ST, ST LEONARDS NSW 2065

MECHANICAL / ELECTRICAL / SECURITY

Stantec
LEVEL 4/99 WALKER ST, NORTH SYDNEY NSW 2060

HYDRAULIC / FIRE

Warren
Smith &
Partners
LEVEL 9/233 CASTLEREAGH ST, SYDNEY NSW 2000

LANDSCAPE ARCHITECT

CLUSTER associate
65-69 KENT ST, SYDNEY NSW 2000

PROJECT NORTH

N
50mm ON ORIGINAL

FOR CONSTRUCTION

DRAWING
GENERAL ARRANGEMENT ELEVATIONS
NORTH & EAST ELEVATIONS

DRAWN AB	APPROVED RP	PRINT DATE 4/02/2021
SCALE 1:200(A1)	PROJECT NO. 21807	STATUS CONSTRUCTION DOCUMENTATION
DRAWING NO. LHAP-AR-FPA-DRG-CP-120002	ISSUE 09	