



Broken Hill Hospital's new healthcare worker accommodation is on its way

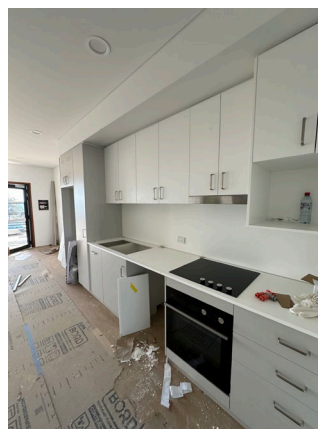
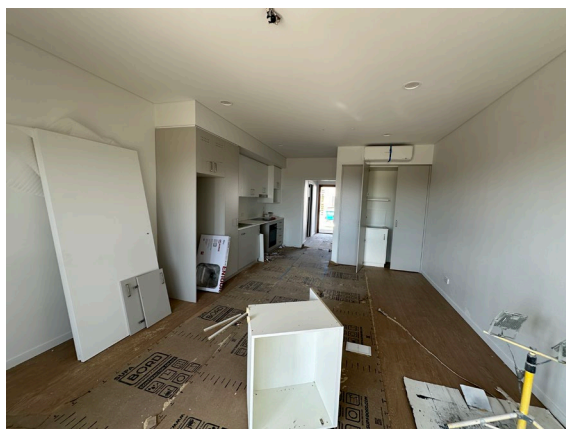
Work on the delivery of Broken Hill's key health worker accommodation units is continuing to progress well, with off-site manufacturing of the 20 accommodation units in full swing.

Planning approval has been granted and on-site works are expected to start on the northern (upper) area of the Broken Hill Hospital campus off Morgan Street, adjacent to the existing staff accommodation quarters, in mid-September to prepare the site for the delivery and installation of the accommodation units in November.

Once the accommodation units are delivered and assembled on site, connection of services, landscaping, and furnishing of the units will take place, ready for healthcare workers to move in, early 2025.



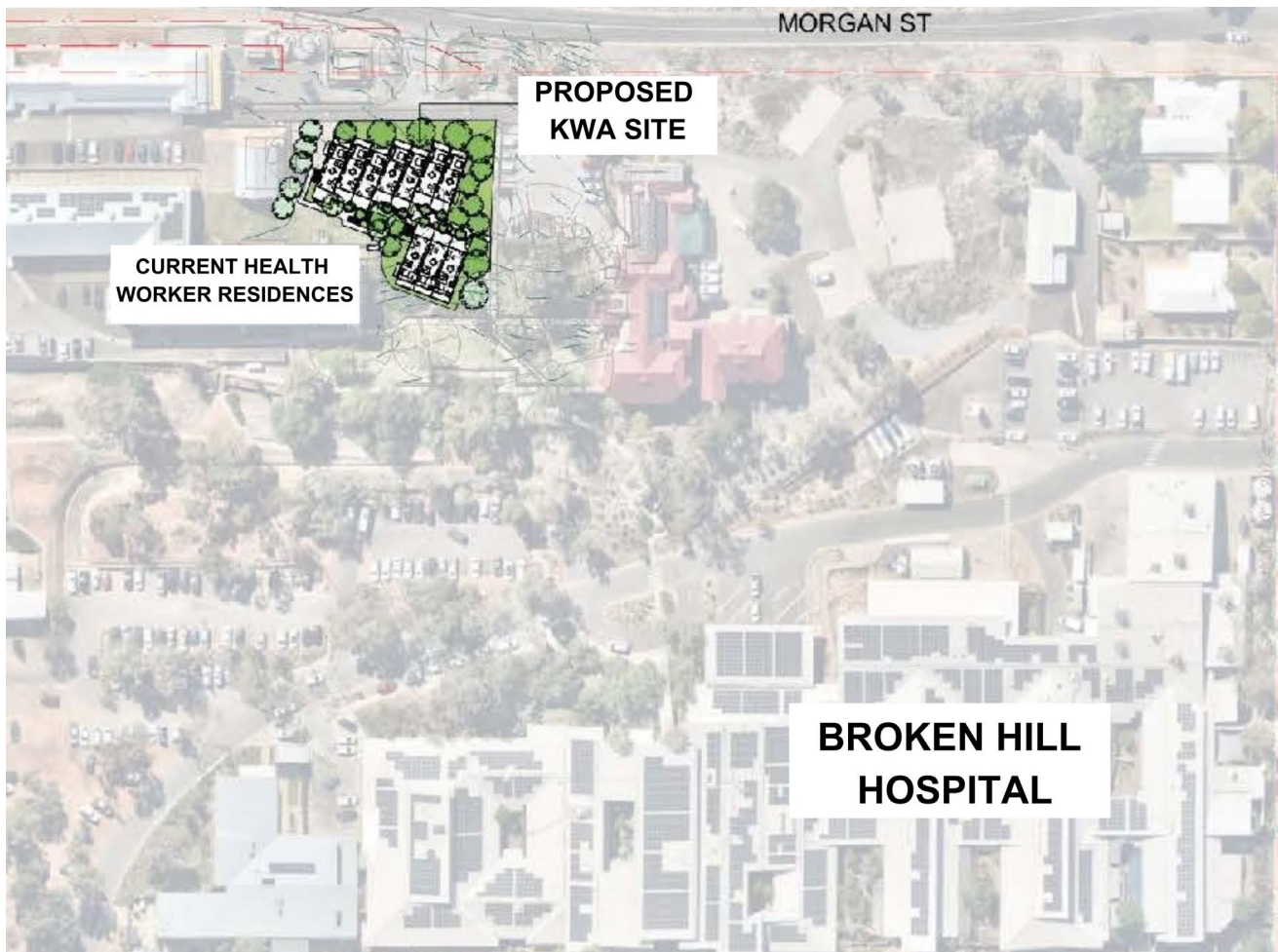
Progress of off-site manufacturing of the Broken Hill KWA units (late August 2024)



Site Establishment

Hutchinson Builders will start site works in mid-September, which will include:

- Installation of site fence around the perimeter of the work zone
- Installation of site office, lunchroom and toilet facilities for the contractors
- Installation of substructure base for the accommodation units



Statutory requirements will be met in relation to dust and noise associated with works, and this will be kept to a minimum.

Information will continue to be provided during the works about any other direct impacts to Broken Hill Hospital and other services located on the campus, the current residences, or University Department of Rural Health in relation to access, parking or operations.

The Broken Hill Health Service Redevelopment project, which includes the construction of the new Acute Mental Health Inpatient Unit and upgraded Emergency Department, is occurring at the same time as the installation of key health worker accommodation. The two projects are working together to minimise disruption.

For your safety, please be aware of extra activity on site and follow any directions during this time. We thank you for your patience. Regular updates about progress will be provided via project update newsletters, social media posts and news items.



The Key Worker Accommodation Program

The NSW Government is investing \$45.3 million to deliver modern, sustainable accommodation for health workers in three rural health districts: Far West, Southern NSW, and Murrumbidgee.

Program Benefits:

- Attract more health workers to rural and regional hospitals.
- New, fit for purpose, self-contained and spacious accommodation.
- Fully furnished, providing a safe and comfortable environment.
- Landscaping.
- Located on hospital grounds.
- Establish a community within a community allowing spaces for staff to connect with each other.

In the Far West Local Health District, Broken Hill and Balranald have been identified as sites for key worker accommodation. Balranald KWA is now complete with the installation of four units.

To watch the Key Worker Accommodation Prototype Tour video, please visit bit.ly/4bhjbxk.

For more information, contact:

02 8838 8889

HI-KeyWorkerAccommodation@health.nsw.gov.au