

MURRAY RIVER

A new regional hospital for Albury, Wodonga and beyond

Important planning and design work continues

With master planning for the Albury Wodonga Regional Hospital project now complete, planning and design has progressed to the concept design stage.

Building upon the master plan, the concept design shows the size and scale of the new hospital, as well as the relationships between the clinical functions, services, buildings and other facilities to be delivered as part of the project.

Ongoing consultation with a broad range of stakeholders and the community is essential to the project planning, design and delivery process and this will continue throughout delivery of the project.

Consultation with stakeholders and the community will be undertaken on the concept design over the

coming months. We'll continue to keep the community informed of opportunities to provide feedback as planning progresses.

Other project activities underway include:

- Logistics planning
- Information Communications and Technology (ICT) planning
- Planning for the Albury Adult Acute Mental Health Inpatient Unit
- Early works planning.

To be notified of upcoming consultation activities, register your contact details via the link:

hinfra.health.nsw.gov.au/alburycampusredev



ARTIST IMPRESSION: KEENE STREET MAIN ENTRY

Project Community Advisory Group shapes planning and design

Residents from both sides of the border are helping to shape the planning and design of the Albury Wodonga Regional Hospital project through establishment of a Project Community Advisory Group.

The Project Community Advisory Group was formed in September 2023 following an extensive expression of interest and selection panel process, and includes local patient and community representatives who have a passion for improving access to health services and facilities for the border community.

With varied backgrounds, skillsets and lived experiences, the group's members represent the diverse urban, regional and rural communities of the Albury Wodonga Health catchment area.

Working closely with the project team, the group provide input and advice on a range of matters relating to the new hospital's design including indoor and outdoor spaces, accessibility, wayfinding and signage, food and retail, arts and culture, and patient, carer and family spaces.

With a focus on ensuring the new and expanded facilities reflect a wide range of patient needs, health experiences and community perspectives, the group has been influential in providing a range of design ideas that will be incorporated into the hospital's design.

In February, the group met with the project team to share what was important to think about when designing the hospital's new main entrance, and indoor and outdoor spaces.

The PCAG will continue to meet with the project team as the planning and design progresses.

We thank the group for their invaluable contribution to the project, and for sharing their lived experiences with the team.

The PCAG is one of the many ways we're engaging and working with the community and stakeholders to progress planning and design for the hospital project.

If you have an interest in sharing your ideas to help inform the design of the new hospital, please email your feedback to the Project Community Advisory Group at: HI-Albury@health.nsw.gov.au



FEBRUARY DESIGN WORKSHOP



FEBRUARY DESIGN WORKSHOP



FEBRUARY DESIGN WORKSHOP

Meaningful engagement continues with local Aboriginal Elders and community

“Country supports, provides, it cares for us... if we can replicate or produce anything that looks like Country inside the hospital, people will feel that it’s a welcoming, safe space caring for my health needs.” Aunty Ruth Davys

The Albury Wodonga Regional Hospital project provides a unique opportunity to recognise Aboriginal cultural heritage and work closely with our local Aboriginal community to design and deliver a new hospital that is culturally safe and welcoming for everyone.

Over the past year the project team has been working closely with a passionate group of local Aboriginal Elders, youth, organisations and community representatives through Connecting with Country design jam workshops, to understand how the local community can feel connected to, and cared for by Country in the new hospital.

Design jams are collaborative workshops that bring together the knowledge of the local Aboriginal community, health service and project team to develop innovative ideas and solutions that will help inform the design of the new hospital.

A series of design jam workshops were held during the planning phase of the project, and will continue during the project design phase. Included below is a summary of what we’ve heard during the Connecting with Country design jams to date.

The feedback received within the scope of the project will help inform the design as the project progresses.



Design jams: what we’ve heard

Healing landscapes

- Support Sorry business spaces and activities at the new hospital
- Create lush gardens with Australian native species
- Plant a bush medicine garden
- Offer bush tucker and aromatherapies such as lemon-scented gum and flowing water
- Access to greenery, trees, plants and grass for patients, carers, visitors and families to enjoy
- Incorporate places for Aboriginal mental health support
- Promote sensory experiences through sights, sounds and smells from Country

Connection to nature

- Provide lush greenery and native plants in courtyards
- Incorporate native bird habitat
- Incorporate large windows, skylights and window views
- Ensure hospital windows open up for fresh air
- Maximise access to natural light
- Foster a visual connection to the outside
- Promote rehabilitative healthcare and healing outdoors
- Provide culturally grounding gardens and outdoor chapels

Creating cultural spaces

- Encourage local Elders's to become hospital volunteers and visitors in-residence
- Offer specific units for mothers and babies, women and men
- Provide yarning circles and spaces
- Promote Aboriginal art, song, dance and storytelling spaces
- Create gathering spaces for families and visitors
- Ensure a sense of privacy for patients, carers, visitors and families

Healthcare and representation

- Prioritise Indigenous autonomy in healthcare
- Promote respect for Aboriginal culture and belongings
- Increase the presence of Aboriginal healthcare practitioners through hiring more Aboriginal staff
- Establish specialist clinics on specific days
- Support Aboriginal maternity care and breastfeeding spaces
- Make cultural safety training and onboarding a requirement for all health service staff
- Focus on upskilling and connecting with other Aboriginal communities

Building and environment

- Integrate the Wiradjuri totem, the Goanna
- Create a culturally welcoming hospital entrance
- Create culturally welcoming waiting rooms
- Name hospital spaces after Wiradjuri flora and fauna
- Reflect local landscape colours and shapes in the design
- Introduce curved and soft design elements
- Ensure openness as part of the design
- Utilise cultural advisors and ochre from Country for designs
- Use textures and colours that represent Country



News from the health service

Emergency department opening

It was a busy time on campus last month with the new Albury Emergency Department opening its doors to patients on the 10 April 2024.

The Albury Emergency Department now includes 42 treatment spaces, a specialised resuscitation hub, paediatric and acute treatment areas and multiple triage rooms with accompanying waiting rooms. The new emergency department also features new ambulance bays, X-Ray and CT scanning spaces, behavioural assessment rooms and private family consult rooms.

This exciting milestone represents a significant advancement in Albury Wodonga Health's ability to provide effective emergency care to the community in a contemporary facility, and will complement the Albury Wodonga Regional Hospital project.

With construction of the new emergency department now complete, the old emergency department will be refurbished as a 16-bed short stay unit, with works due to be completed later this year.

For further information, visit:

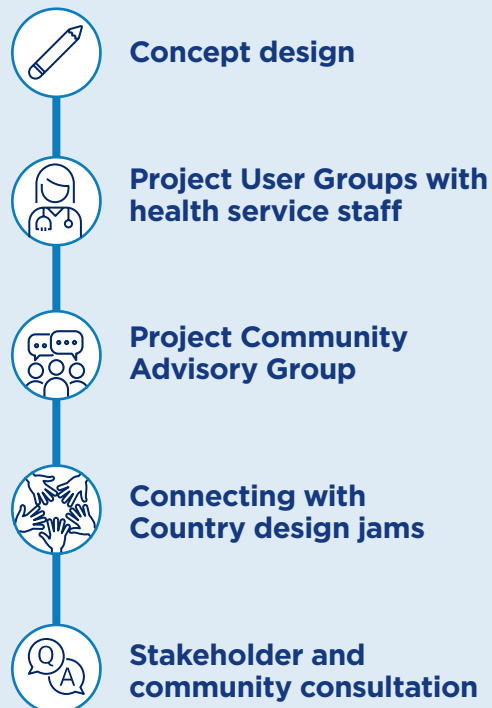
www.awh.org.au/albury-emergency-department

The new \$36 million Albury Emergency Department and short stay unit is jointly funded by the NSW and Victorian governments and delivered by the Victorian Health Building Authority in partnership with Albury Wodonga Health.

Progress to date



Coming up in 2024



How to get in touch

The project team is committed to ensuring health service staff, stakeholders and the community have accurate and timely project information.

The project website, including FAQs, will be updated regularly and information will also be shared via project newsletters, direct correspondence and consultation activities at key milestones.

For more information or to register for project updates, visit the website or contact the project team via the details below.



The NSW, Victorian and Australian governments have committed \$558 million to the Albury Wodonga Regional Hospital project, one of the largest regional health projects currently underway in NSW and Victoria.

The project will deliver a major new regional hospital and improved health services to meet the health needs of Albury, Wodonga and border communities, now and into the future.

Once complete, the project will improve patient safety, reducing the duplication of services and travel between the Wodonga Hospital and Albury Hospital sites, and increase the capability and responsiveness of the health service to meet the future healthcare needs of the community.

The project is being delivered by Health Infrastructure in partnership with the Victorian Department of Health, Victorian Health Building Authority and Albury Wodonga Health.