



HEALTH INFRASTRUCTURE

Expression of Interest (EOI)

Three Arts, Play and Discovery Commissions for
Sydney Children's Hospitals Network (SCHN)

19 December 2023

EOI closes 11.59pm Sunday 21 January 2024



Acknowledgement of Country

We acknowledge traditional custodians of the lands of the sites of the Sydney Children’s Hospital, Randwick – the Bediagal people, and The Westmead Children’s Hospital – the Darug and Burramattagal people. These lands have been, and continue to be a special place for the custodians of Country.

Table of Contents

Sydney Children’s Hospitals Network Redevelopment	3
Creative Commissions	3
APD opportunities invited by open EOI	4
Opportunity 1: Interactive Digital Experience - Acute Procedure Rooms.....	5
Opportunity 2: Procedure Room Soundscapes	5
Opportunity 3: Healing Ceilings	6
EOI Submissions and Process	7
Project Timeframe.....	7
Terms and Conditions.....	8
Design Drawings – Indicative Only	9

Sydney Children's Hospitals Network Redevelopment

The Sydney Children's Hospitals Network's (SCHN) Westmead and Randwick Hospitals are currently undergoing two (2) significant redevelopments:

1. The Children's Hospital at Westmead Stage 2 (CHW2)

The CHW2 project furthers the Westmead Health Precinct as one of the largest health, research, education and training precincts in the world. The NSW Government is investing \$619 million to redevelop the 14-storey high CHW2.

2. Sydney Children's Hospital Stage 1 and Minderoo Children's Comprehensive Cancer Centre (SCH1/MCCCC)

The \$658 million **SCH1/MCCCC** redevelopment is underway, paving the way for Randwick to be home to a state-of-the-art paediatric health, medical research and education hub.

Creative Commissions

The newly redeveloped hospitals will provide accessible and quality spaces for patients, staff and visitors, allowing for more integrated hospital facilities. Both hospitals have a strong history of arts and play programs for both participatory and receptive programming.

Within the redevelopment across the two SCHN sites, a series of new creative commissions will integrate arts, play and discovery experiences into the new hospital facilities. Three (3) of these new commissions are intended to support young patients receiving acute hospital treatment and are open to creatives to register their Expression of Interest (EOI).

Successful applicants will complete the **EOI form in full** and demonstrate their professional experience as an artist, designer or creative team relevant to the Arts, Play and Discovery (APD) curatorial intent.

All applicants should read the PDF excerpt of the SCHN APD curatorial plan to ensure that their proposals are in keeping with the APD direction that the SCHN has adopted.

APD opportunities invited by open EOI

There are three commissions open to Expressions of Interest:

- Opportunity 1: Interactive Digital Experience - Acute Procedure Rooms
- Opportunity 2: Procedure Room Soundscapes
- Opportunity 3: Healing Ceilings

Creatives may apply to one or more of these opportunities. Creatives wanting to apply for more than one commission must submit separate forms and Creative Responses for each opportunity they are interested in.

Considerations common to all opportunities:

- The key objective for the APD commissions is to help calm and distract discomforted patients (children and young people aged 0-16 years).
- APD commissions hold the potential to be transformative and exert a substantial, immediate influence on the patient's wellbeing.
- The EOI opportunities are all patient-facing and are not accessible to general public.
- Patients in these contexts are receiving various treatments (including minor surgical procedures) which are usually performed under topical, local or regional anaesthesia, or minimal intravenous sedation.
- Consideration should be given to the accessibility needs of the children and young people using these locations. Patients may have different cognitive abilities, have physically limiting bed-based conditions or unable to walk.
- While the works should help distract the patient from a distressful experience, they should not hinder the required Clinician-to-patient communication and treatment.
- Rooms for treatments are a day space only. Return visits are common and patient stays vary in duration.
- Infection control requires that all surfaces can be wiped down and regularly cleaned.

Opportunity 1: Interactive Digital Experience - Acute Procedure Rooms

Budget: \$200,000

- Base-level construction costs are already covered by the redevelopment.
- This \$200,000 budget allocation is to include:
 - Contractor / artist fees
 - Additional material or installation costs that deviate from the base-level construction allowances.

Context:

In these acute procedure rooms children will undergo the more intense and painful procedures involved in their treatment. As such, these are places of high anxiety and distress, and it is important that they are designed to distract and calm patients as much as possible using high stimulation digital and sensory engagement.

The age range of children accommodated in this space spans from newborns to 16-year-olds. It is important to note that many patients require repeat visits for these acute procedures. Consequently, these rooms may elicit fear and apprehension in patients.

The SCHN is looking for a creative and playful digital interactive experience that can help distract and calm children and digitally take their attention to 'other worlds'. To this end, the suggested direction is for the installation of interactive virtual windows that act as portals to these other worlds.

Considerations:

- Interactive digital experiences are planned for both Westmead and Randwick sites. The number of rooms that SCHN will be able to install will be subject to costs.
- Ideally, the content will have an interactive element that varies with each use. This will give patients a sense of agency in controlling the content and ensure that they don't get bored with the content on repeat visits.
- Overhead and directional lighting is needed to meet the clinical needs of these acute procedure rooms. Video or lighting systems will need to work within these constraints.
- Interactive choices should be uncomplicated and adaptable, taking into account the child's cognitive abilities and information processing capabilities.

Opportunity 2: Procedure Room Soundscapes

Budget: \$100,000

- Base-level construction costs (including basic audio equipment allocations) are already covered by the redevelopment.
- This \$100,000 budget allocation is to include:
 - Contractor/artist fees
 - Additional material or installation costs that deviate from the base-level construction allowances.
 - Uplift on audio equipment (if required)

Context:

Procedure rooms are where children and young people get medical treatments. Although not necessarily patients with acute symptoms, they might have painful and distressing experiences during the procedures, due to the nature of physical treatment itself. Consequently, these rooms may elicit fear and apprehension in patients. Clinicians can also find experiences in these rooms stressful and intense. Distraction, support, and recovery are the key design APD objectives in these rooms to address these concerns.

This opportunity is for a sound artist/creative team to create a soundscape experience that can positively influence the atmosphere in procedure rooms.

Considerations:

- Soundscapes in procedure rooms are planned for both Westmead and Randwick sites. The number of rooms that SCHN will be able to install soundscapes in will be subject to costs.
- Soundscapes that invoke natural environments and counteract the clinical setting are encouraged.
- The soundscapes should have multiple versions/variable programming so that they do not loop and frustrate patients and staff.
- Any interactive choices on soundscape should be uncomplicated and adaptable, taking into account patients' cognitive abilities and information-processing capabilities.

Opportunity 3: Healing Ceilings

Budget: \$100,000

- Base-level construction costs (including electrical provisioning) are already covered by the redevelopment.
- This \$100,000 budget allocation is to include:
 - Contractor/artist fees
 - Additional materials or installation costs that deviate from the base-level construction allowances.

Context:

This opportunity is for graphic artist/lighting designer or creative team to create a visually inspiring ceiling design in selected locations across both hospital sites. The project is a response to the extended treatment or recovery periods for some patients, and the requirement to remain on their backs, often creating restricted fields of vision.

The healing ceilings in the hospital will be viewed by patients on their way to and from operating theatres, as well as in treatment rooms or procedure rooms. Different proposals may be proposed for 'healing ceiling' designs. For example:

1. Installation of bespoke lighting treatments on the ceiling.
2. Printed ceiling panels (potentially perspex) that can replace the standard ceiling tiles (1200 x 600mm) and be back lit with appropriate lighting.

Considerations:

- Lighting selection should consider implications and interface with standard/procedural lighting (i.e. LUX levels).
- Dynamic lighting states may be considered subject to patient photosensitivity requirements.
- Treatment rooms often have medical equipment hanging from the ceiling.
- Any lighting installations must be recessed or placed in such a way so that they do not collect dust.
- Corridors are a transient space with high volume of bed transfers as well as a high volume of foot traffic.

EOI Submissions and Process

Applicants MUST submit the EOI Form and Creative Response for each proposal they are expressing interest in by 11.59pm Sunday 21 January 2024 to be eligible.

The Creative Response is to be emailed to HI-Arts@health.nsw.gov.au, and MUST include the following:

- Artist/creative team bio and CV (maximum two pages)
- Up to 10 images of previous work
- Project concept proposal statement (maximum 250 words)

EOIs will be reviewed by a Selection Panel comprising representatives of Health Infrastructure, SCHN Redevelopment and Clinical teams and external expert advisors.

A number of artists/creative teams will be shortlisted from this process – either for single source appointment or potentially for a subsequent round of competitive procurement.

Selection Criteria

Artists/creative teams will be selected to progress to the next stage based on the below criteria:

1. Creative practice: Work in a style complementary to paediatric health care environments: joyful, caring and restorative.
2. Experience: demonstrated previous experience on similar scaled projects.
3. Demonstrated capacity to integrate creative practice with architectural and interior design

Project Timeframe

- Expressions of Interest open Tuesday 19 December 2023
- Expressions of Interest close 11.59pm Sunday 21 January 2024
- Artists/creative teams progressing to subsequent stage of procurement will be notified by 29 February 2024.
- Concept and detailed design program varies commission to commission throughout 2024 and will be negotiated with the successful applicant.

Terms and Conditions

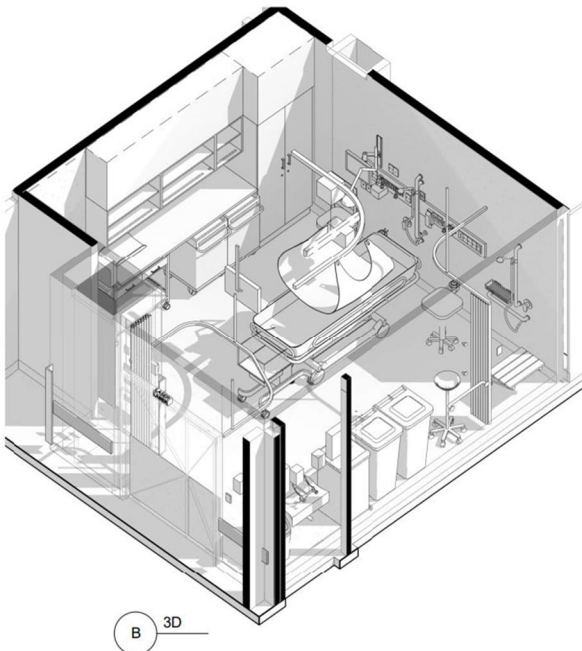
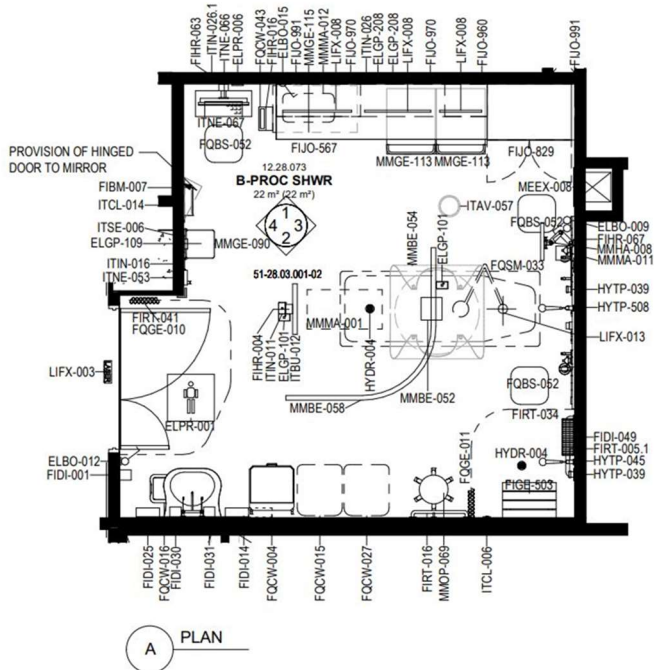
1. By submitting an Expression of Interest (EOI), artists and creative teams accept the Terms & Conditions associated with the APD commission.
2. This EOI form must be completed in full to be eligible, including submitting via email the Creative Response as per Question 9 of the EOI form.
3. Artists/creative teams must be Australian citizens or have permanent resident status.
4. Artists/creative teams must be aged 18 or older.
5. Artists/creative teams must hold public liability insurance.
6. The selected artist/creative team gives non-exclusive rights to Health Infrastructure and Sydney Children's Hospitals Network to publish the selected concepts on social, print and other media as appropriate.
7. Selected concepts will be attributed to the artist/creative teams.
8. All examples of previous works submitted for the EOI must be original works created by the artist/creative team who is submitting the EOI.
9. The decision of the Selection Panel regarding the selected artist/creative team will be final. In the event of any other dispute, the ruling of the Redevelopment Manager shall be final.
10. Artists/creative teams will not be paid for EOI submissions.
11. Artists/creative teams own the copyright of their work.
12. Selected artists/creative teams will grant Health Infrastructure and Sydney Children's Hospitals Network permission to reproduce, publish, or display the image of the selected concepts online (including media) or in publications and for printing to display.
13. All necessary attribution will be made.
14. Use of the concept by the artist/creative team shall attribute Health Infrastructure and Sydney Children's Hospitals Network, subject to separate agreement.
15. Health Infrastructure reserves the right not to proceed with the APD commissions without prior consultation.

Design Drawings – Indicative Only

Opportunity 1: Interactive Digital Experience - Acute procedure rooms

CHW2

Note: Procedure rooms are the preferred areas for this opportunity, such as the Burns procedure room. The drawings are for reference only.

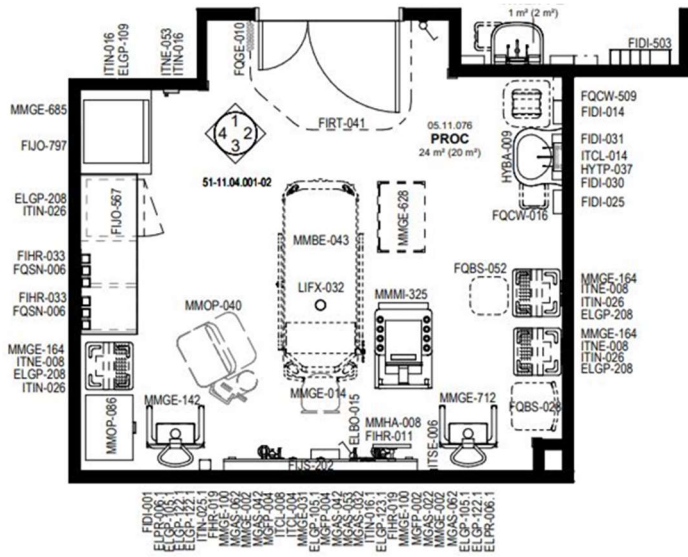


Typical Procedure room, CHW2 (BLP)

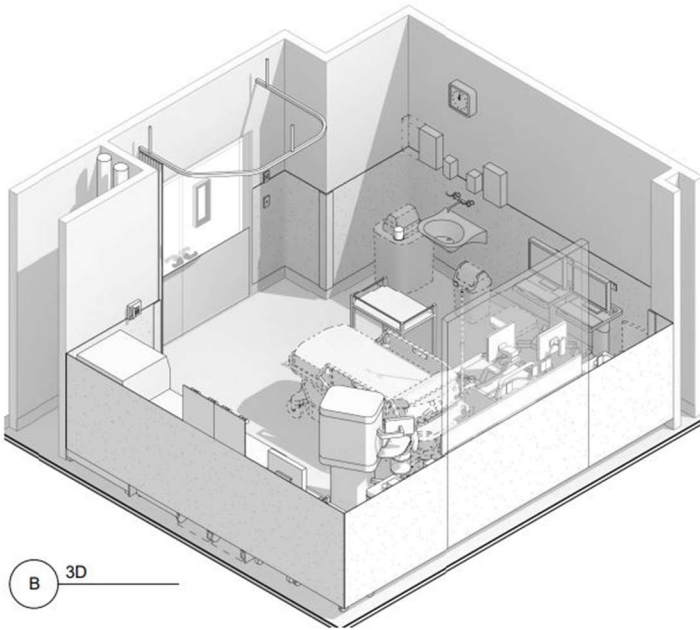
Opportunity 2: Procedure Room Soundscape

SCH1/ MCCCC

Note: Procedure rooms such as Oncology procedure room are the preferred areas for this opportunity. The drawings are for reference only.



A PLAN
1 : 50

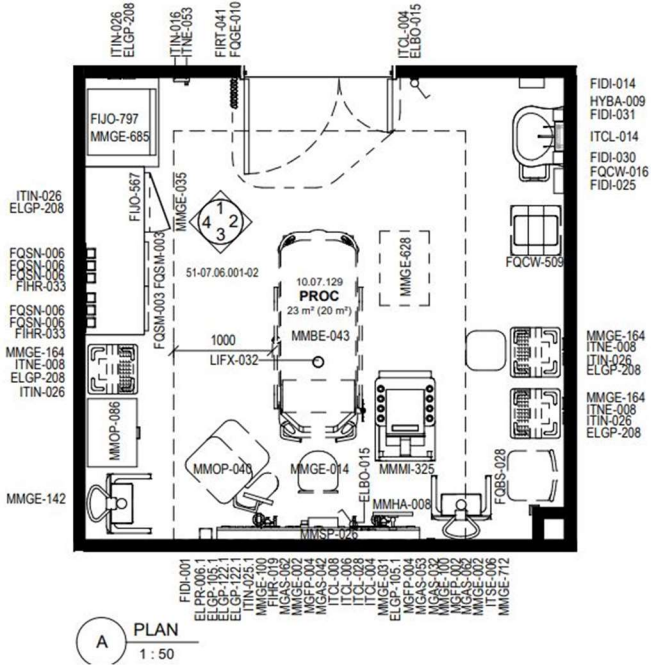


Typical Procedure room, SCH1/MCCCC (BLP)

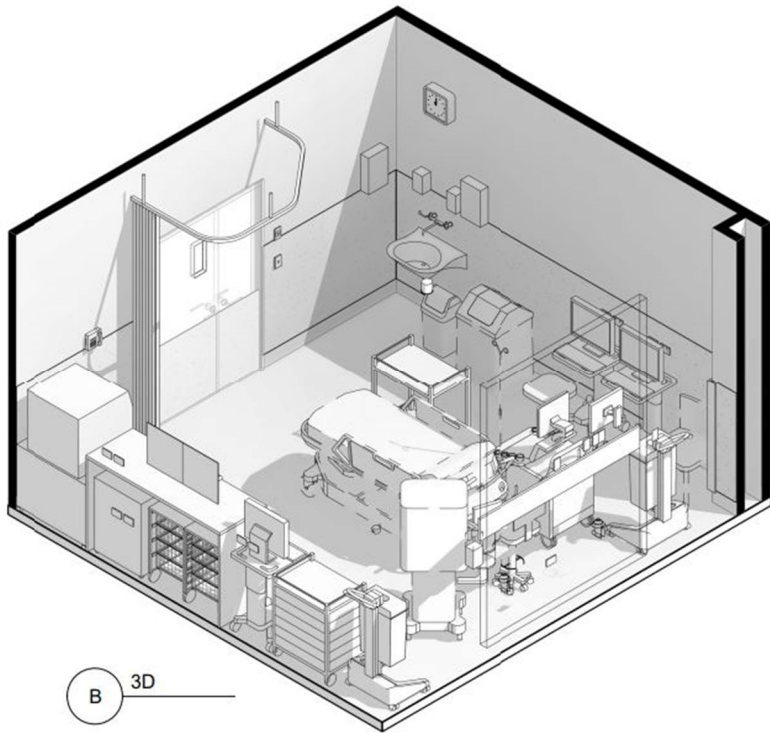
Opportunity 2: Procedure Room Soundscape

CHW2

Note: Procedure rooms are the preferred areas for this opportunity. The drawings are for reference only.



A PLAN
1 : 50



B 3D

Procedure rooms (BLP)

Opportunity 3: Healing Ceilings

SCH1/ MCCCC and CHW2

Note: Corridor and treatment rooms are preferred areas for this opportunity. The render image of corridors and treatment rooms are for reference only.



Corridor at the Hospitals (BLP Architects)

