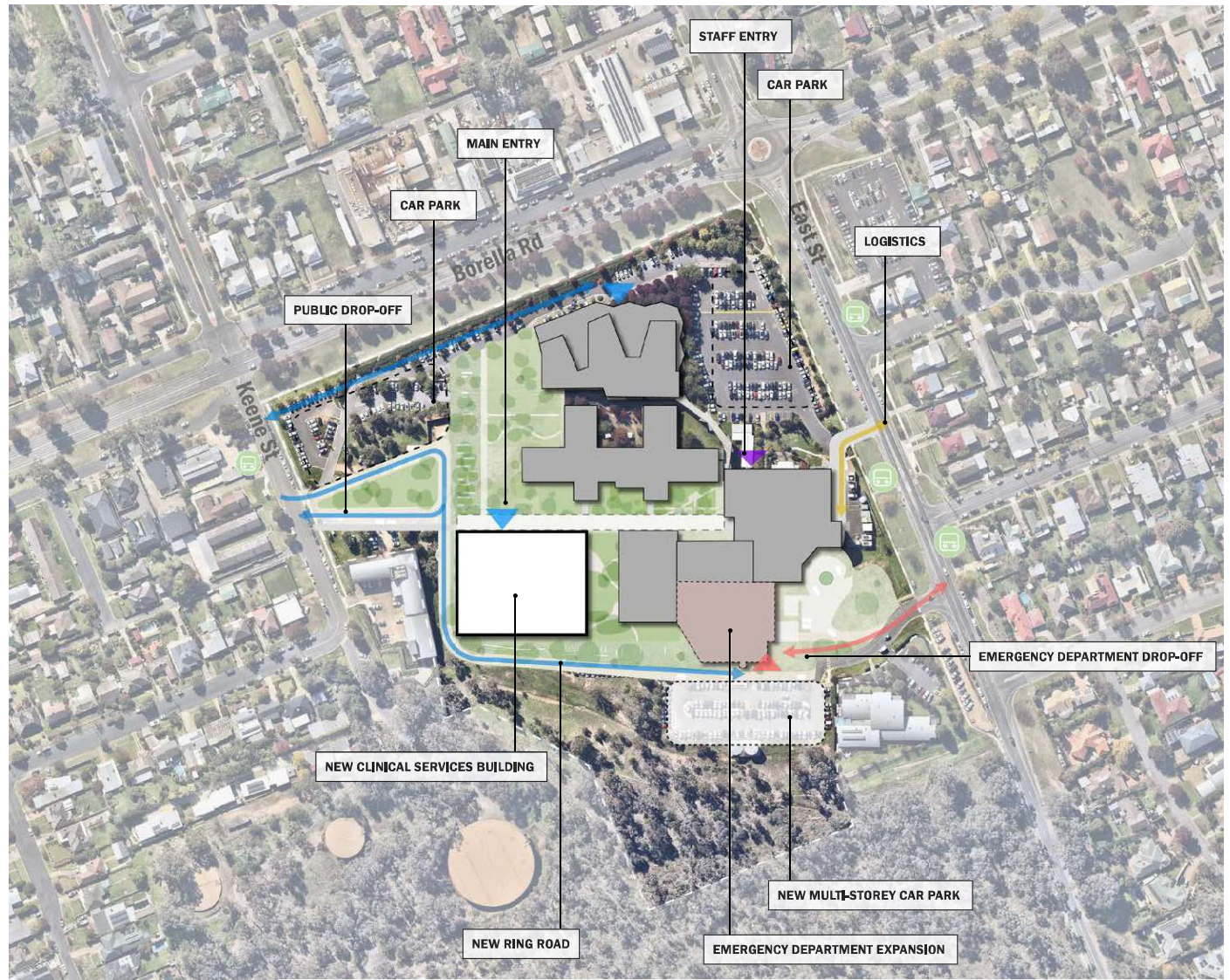


# Master plan

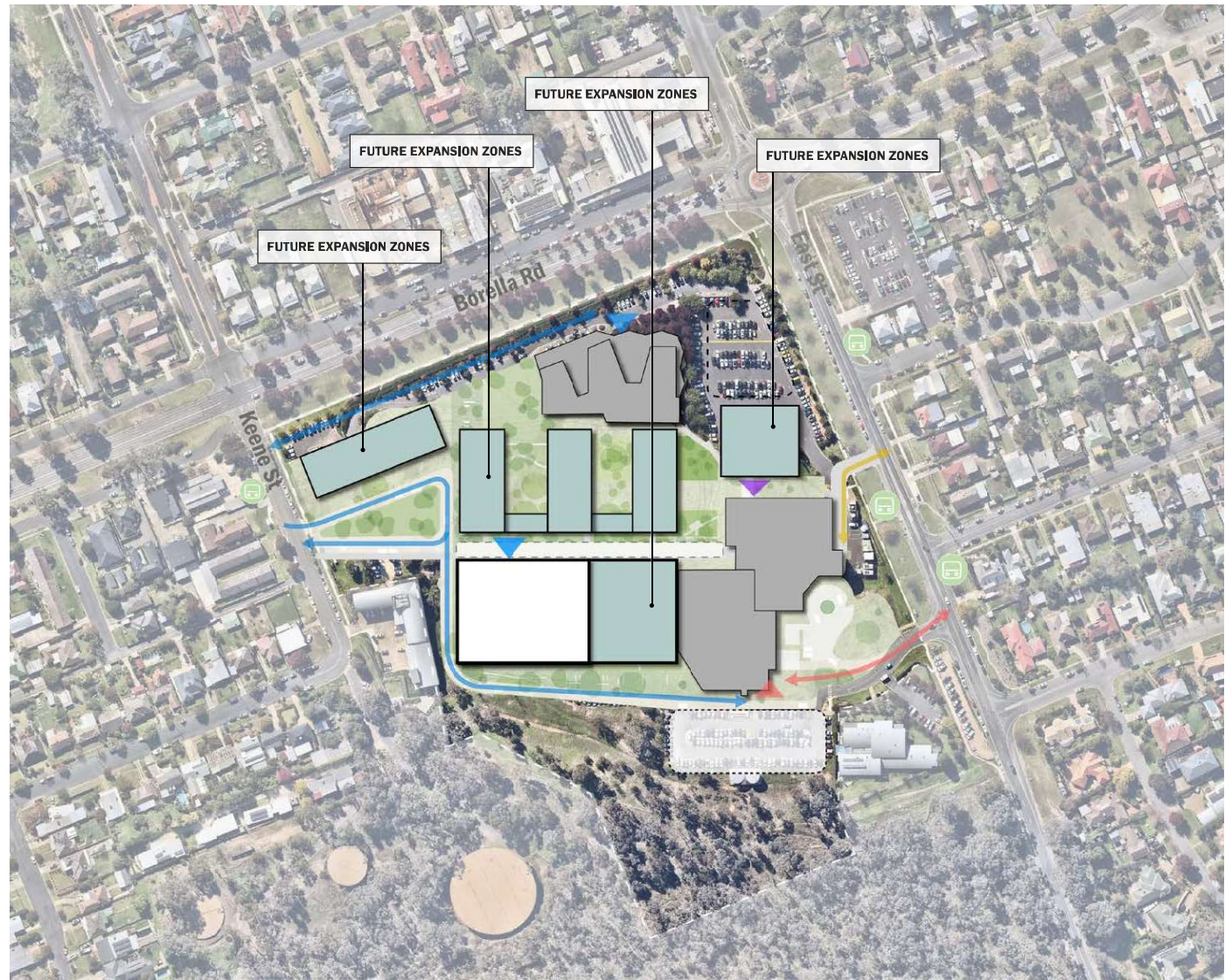
The master plan sets out the vision and high-level framework for development at the Albury Hospital campus in the immediate term, as part of the \$558 million project budget.



# Albury Wodonga Regional Hospital project

# Long-term master plan

The long-term master plan lays the groundwork for future expansion of the Albury Hospital campus through infrastructure, development and partnership opportunities that can be delivered over the coming decades, outside of the \$558 million project budget.



# Albury Wodonga Regional Hospital project