



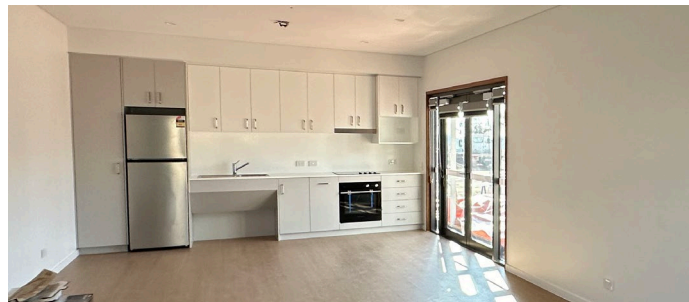
Exciting progress on Cooma Health Service's new healthcare worker accommodation

The off-site manufacturing of Cooma's twelve key worker accommodation units is now complete, with final touches being made to prepare for their delivery to site in mid-November.

On-site works on the Bombala Street side of the Cooma Health Service have now commenced in preparation for the delivery and installation of the units.

Once delivered, connection of services, fencing, landscaping, and furnishing of the units will take place, ready for healthcare workers to move in early next year.

Off-site construction of the Cooma KWA units in progress (August/September 2024)



Accommodation features

There are six lower-storey and six upper-storey units, two of which are wheelchair accessible. Each fully furnished, self-contained unit features a light-filled living and dining area, modern kitchen with quality appliances, bedroom with robe and ensuite, an internal built-in laundry with a stacked washer and dryer, and a screened verandah. Secure access will be provided.

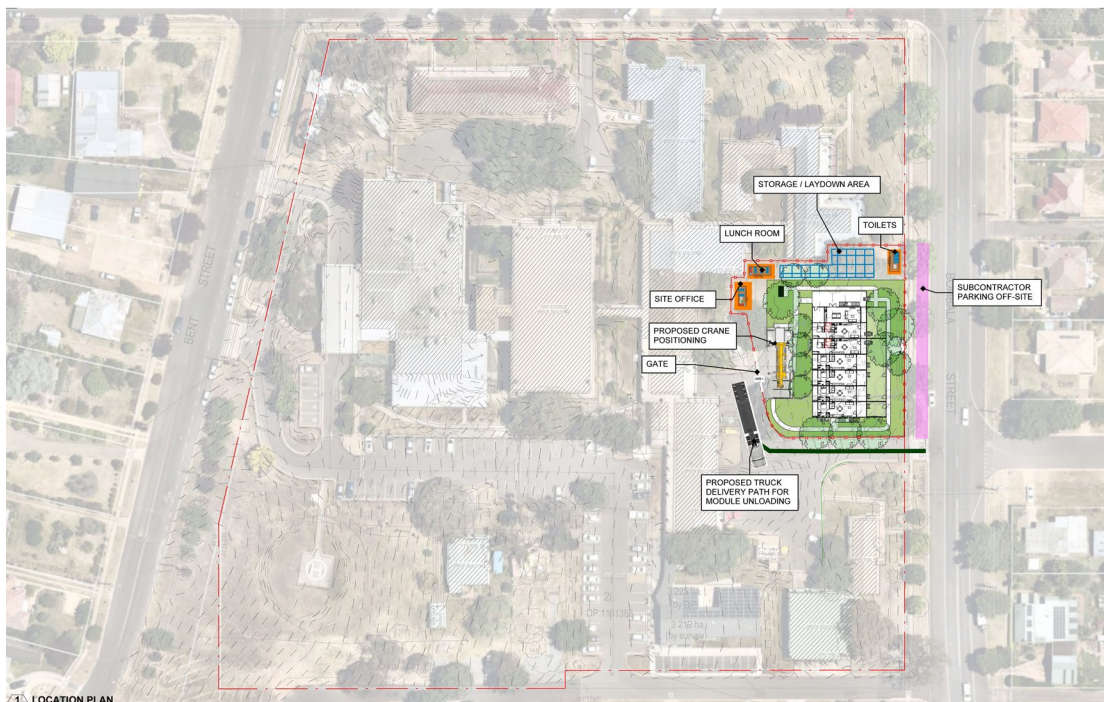
There will also be a communal room and deck on ground floor, landscaping and tree planting around the units.

Site establishment and impacts from works

Hutchinson Builders have now commenced with site works, which include:

- Relocation of existing gas meter – this will require a temporary gas service disconnection for a period of up to two hours on **Wednesday 9 October**. *Please see Works Notification attached for more details and impacts.*
- Installation of site office, lunchroom and toilet facilities for the contractors inside the site fence around the perimeter of the work zone – see map below for site layout. Note the subcontractors will park off-site on Bombala Street.
- Tree removal with new replacement trees planted on site as part of the KWA landscaping.
- Installation of substructure base for the accommodation units.
- There are no impacts to hospital access or parking during site establishment.
- Statutory requirements will be met in relation to dust and noise, and this will be kept to a minimum.

Please note indicated dates are subject to change due to weather conditions or other circumstances out of our control.





The Key Worker Accommodation Program

The NSW Government is investing \$45.3 million to deliver modern, sustainable accommodation for health workers in three rural health districts: Southern NSW, Far West, and Murrumbidgee.

Program Benefits:

- Attract more health workers to rural and regional hospitals.
- New, fit for purpose, self-contained accommodation.
- Fully furnished, providing a safe and comfortable environment.
- Spacious units with communal spaces and landscaping.
- Located on hospital grounds.
- Establish a community within a community allowing spaces for staff to connect with each other.

To watch the Key Worker Accommodation Prototype Tour video, please visit bit.ly/4bhjbxk.

For more information, contact:

02 8838 8889

HI-KeyWorkerAccommodation@health.nsw.gov.au

hinfra.health.nsw.gov.au

Notice of temporary gas disconnection works impacting heating on Wed, 9 October 2024

Health Infrastructure is installing healthcare worker accommodation units on the Cooma Hospital campus as part of the NSW Government's \$45.3m Key Worker Accommodation Program.

Health Infrastructure has engaged Hutchinson Builders to carry out this work, which includes the relocation of an existing gas meter.

This work will require a temporary gas service disconnection for a period of **up to two hours** on **Wednesday 9 October from 10.00am** for the gas meter to be disconnected, moved to its new location and reconnected.

How will the work affect you?

There will be no heating during this time in the following areas of the hospital:

- Emergency Department
- Maternity
- Mental Health Unit
- Former Community Health Unit
- Hydro Pool
- AM Workshop
- Staff Residence

There will also be no hot water in Theatre and Day Surgery – please note there are no surgical procedures scheduled on this day. If an emergency theatre procedure is required, the gas disconnection work will be postponed.

Please note the indicated date is subject to change due to weather conditions or other circumstances out of our control. Advice will be provided accordingly.

The installation of the Key Worker Accommodation units is expected to be complete by early 2025. Hospital staff will continue to be kept informed of any impacts as appropriate.

We recognise that building new infrastructure can be disruptive to staff, nearby residents, businesses and road users. All construction activities are carried out with the health and safety of staff and the local community as our top priority. We thank you for your patience.

For more information about the KWA Program, please contact the project team:

Phone: (02) 8838 8889
Email: HI-KeyWorkerAccommodation@health.nsw.gov.au
Website: hinfra.health.nsw.gov.au
bit.ly/4eFJdNr