

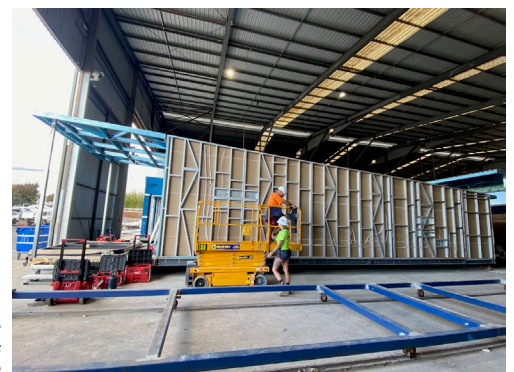


Narrandera Health Service's new healthcare worker accommodation is on its way

Work on the delivery of Narrandera key worker accommodation units is underway following the release of the Prototype and Schematic Design earlier this year.

Planning approval has been granted and off-site manufacturing of the three accommodation units is progressing well, with site works commencing late September 2024 in preparation for the delivery and installation of the units in mid-October 2024.

Off-site manufacturing of the Narrandera KWA units has commenced on the production line



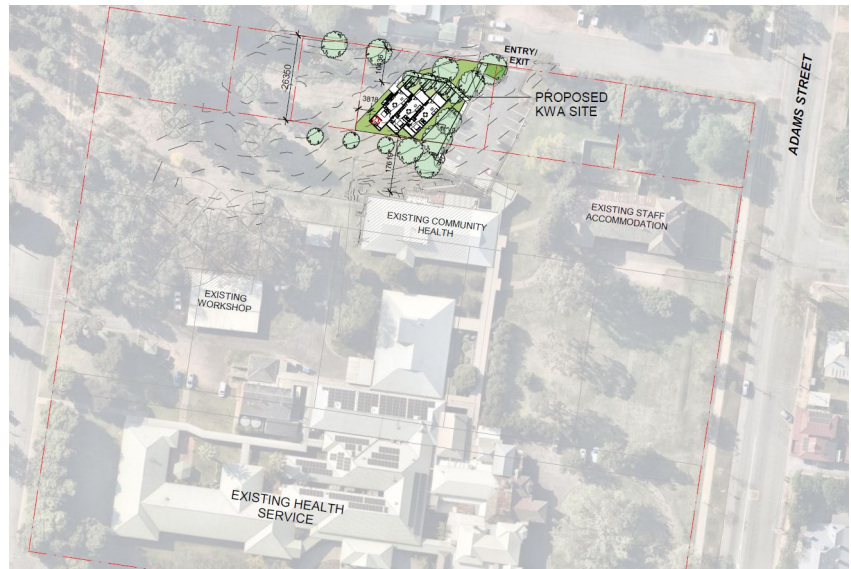
Once delivered, connection of services, fencing, landscaping, and furnishing of the units will take place, ready for healthcare workers to move in before the end of the year.

Accommodation Features

The units will be installed on the north side of the Health Service site off Adams Street (refer to site plan on right for indication of location adjacent to existing buildings).

There are three units in total, one of which is wheelchair accessible. Each fully furnished, self-contained unit features a screened verandah, a light-filled living and dining area, modern kitchen with quality appliances, bedroom with robe and ensuite, and an internal built-in laundry with a stacked washer and dryer.

Parking spaces and secure access to the units will be provided. There will also be landscaping surrounding the units.



The Key Worker Accommodation Program

The NSW Government is investing \$45.3 million to deliver modern, sustainable accommodation for health workers in three rural health districts: Murrumbidgee, Far West, and Southern NSW.

Program Benefits:

- Attract more health workers to rural and regional hospitals.
- New, fit for purpose, self-contained and spacious accommodation.
- Fully furnished, providing a safe and comfortable environment.
- Landscaping.
- Located on hospital grounds.
- Establish a community within a community allowing spaces for staff to connect with each other.

In the Murrumbidgee Local Health District, Finley, Leeton, Narrandera, and West Wyalong have been identified as sites for key worker accommodation.

To watch the Key Worker Accommodation Prototype Tour video, please visit bit.ly/4bhjbxk.

Expected Timeline

Late September: Hutchinson Builders establish site and commence site preparation works.

Mid-October: Accommodation units expected to be delivered for installation.

October – November: Installation, connection of services, fencing and landscaping.

Please note indicated dates are subject to change due to weather conditions or other circumstances out of our control.

Statutory requirements will be met in relation to dust and noise associated with the delivery and installation of the units, and this will be kept to a minimum.

Information will be provided during the works about any other direct impacts to the health service including access, parking or operations. For your safety, please be aware of extra activity on site and follow any directions during this time. We thank you for your patience.

Regular updates about progress will be provided via project update newsletters, social media posts and news items.

For more information, contact:

02 8838 8889

HI-KeyWorkerAccommodation@health.nsw.gov.au

hinfra.health.nsw.gov.au