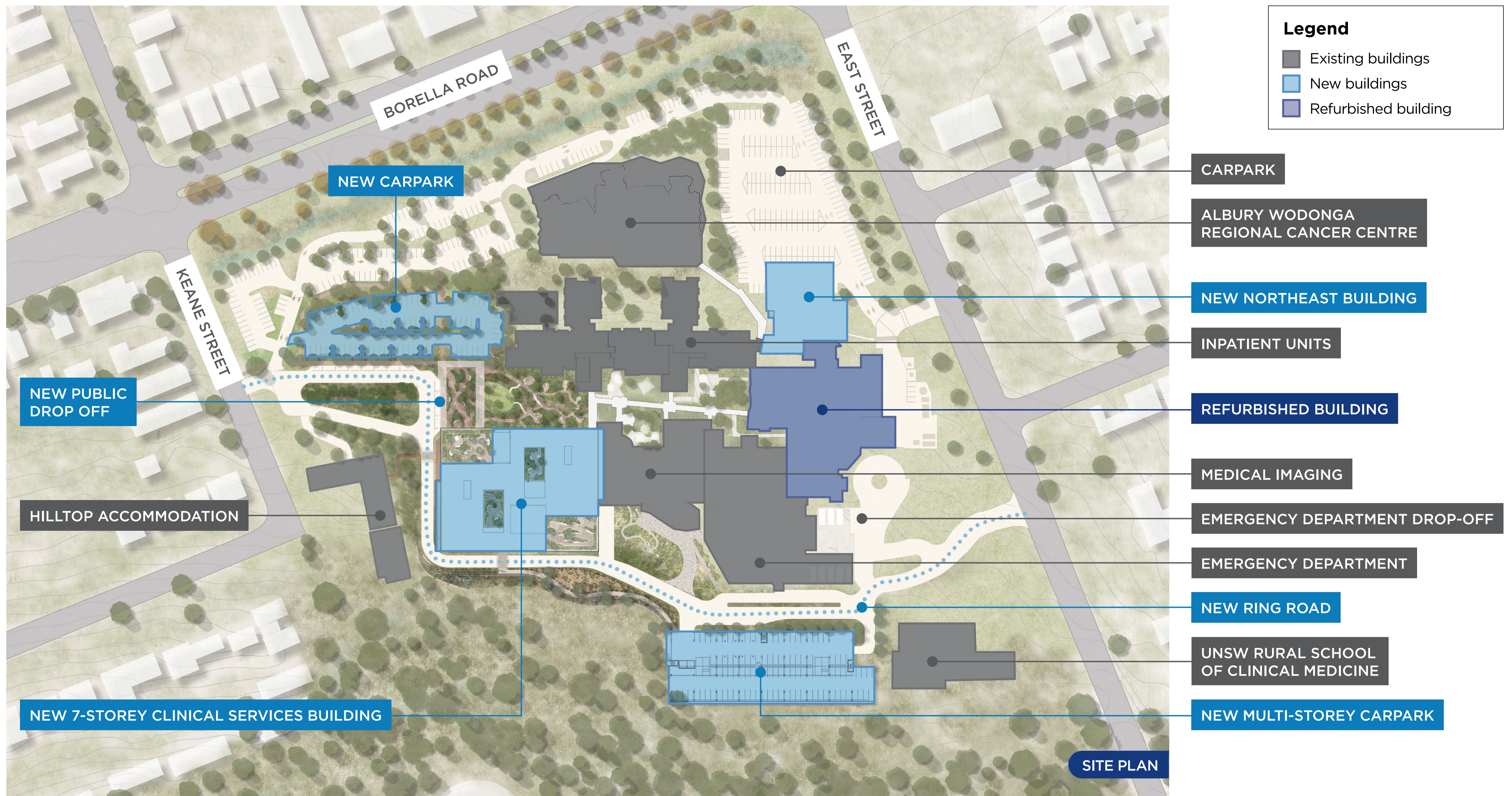
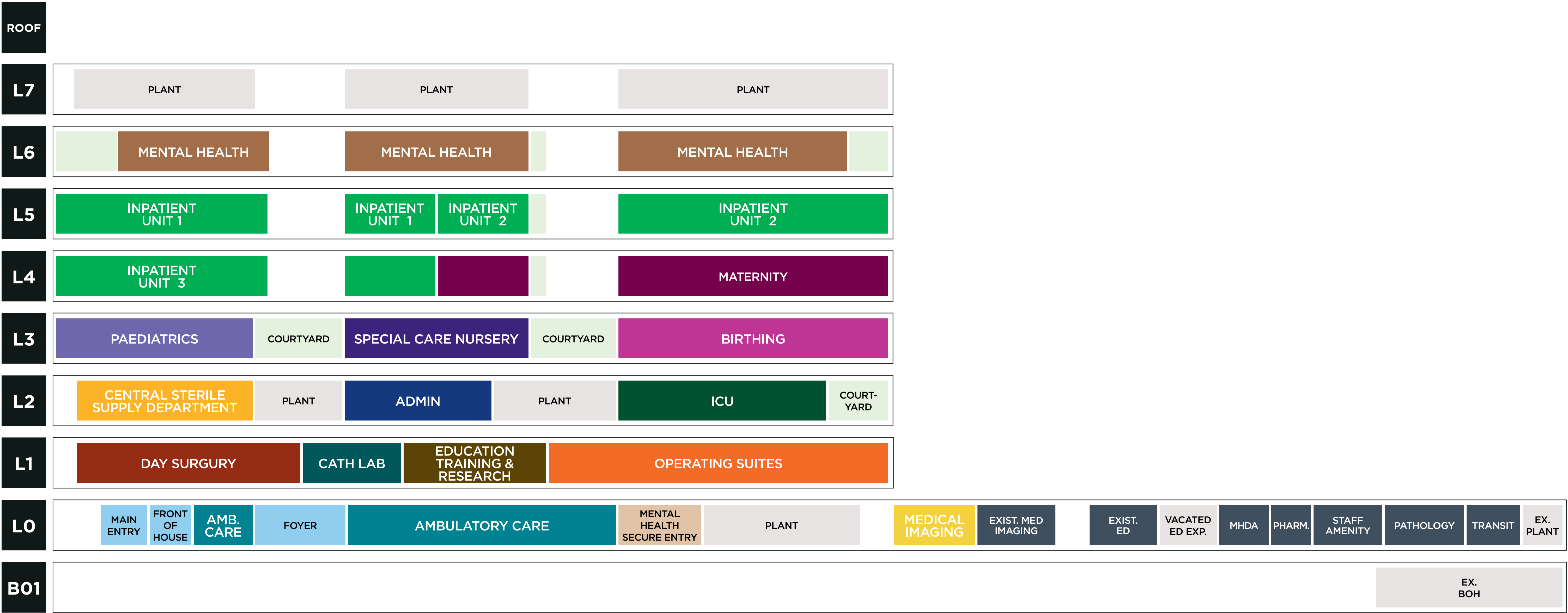




Albury Wodonga Regional Hospital project



Clinical Services Building department layout



New Clinical Services Building

Existing Building

CUT THROUGH - VIEW FROM THE SOUTH

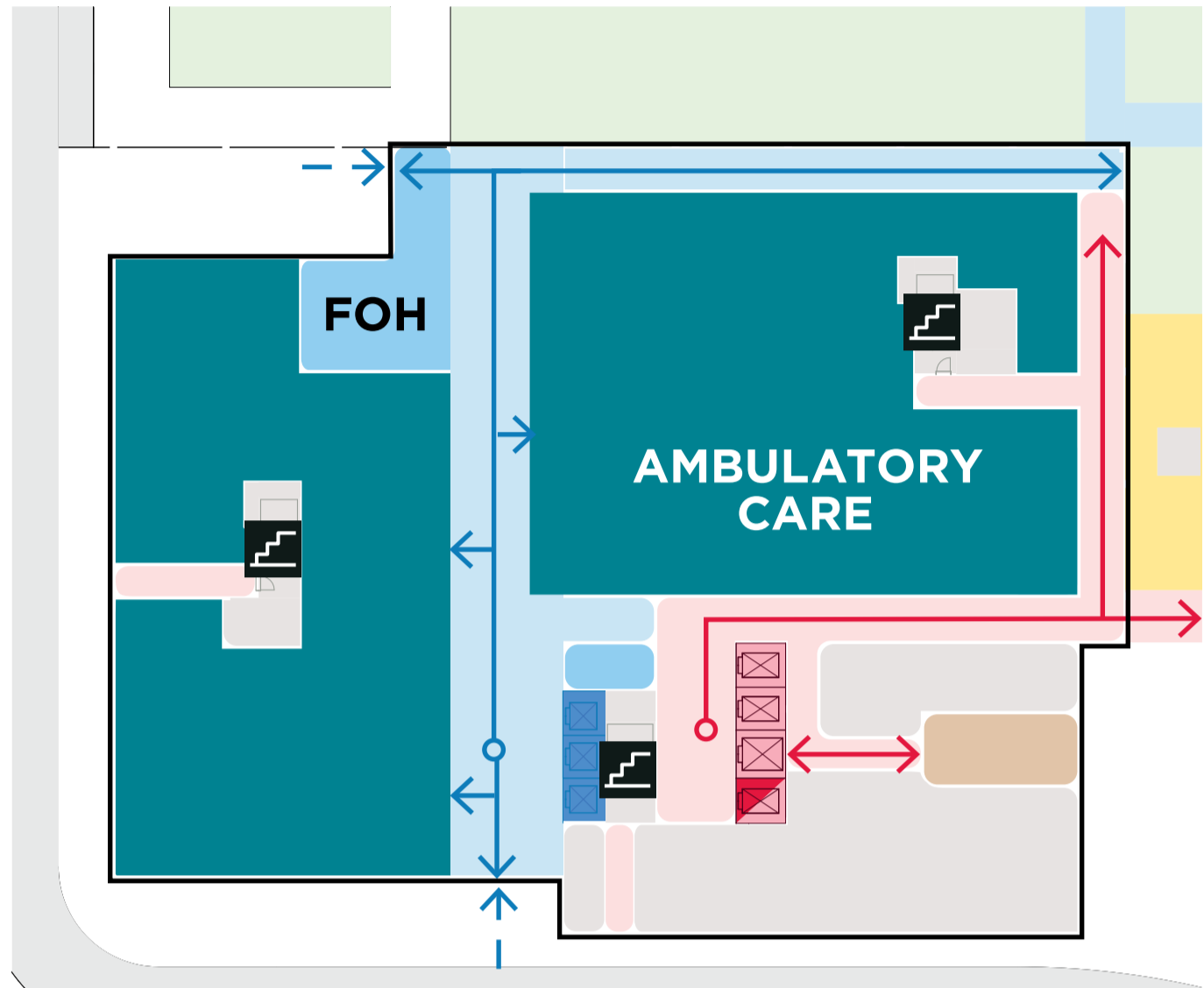


Albury Wodonga
Regional Hospital project

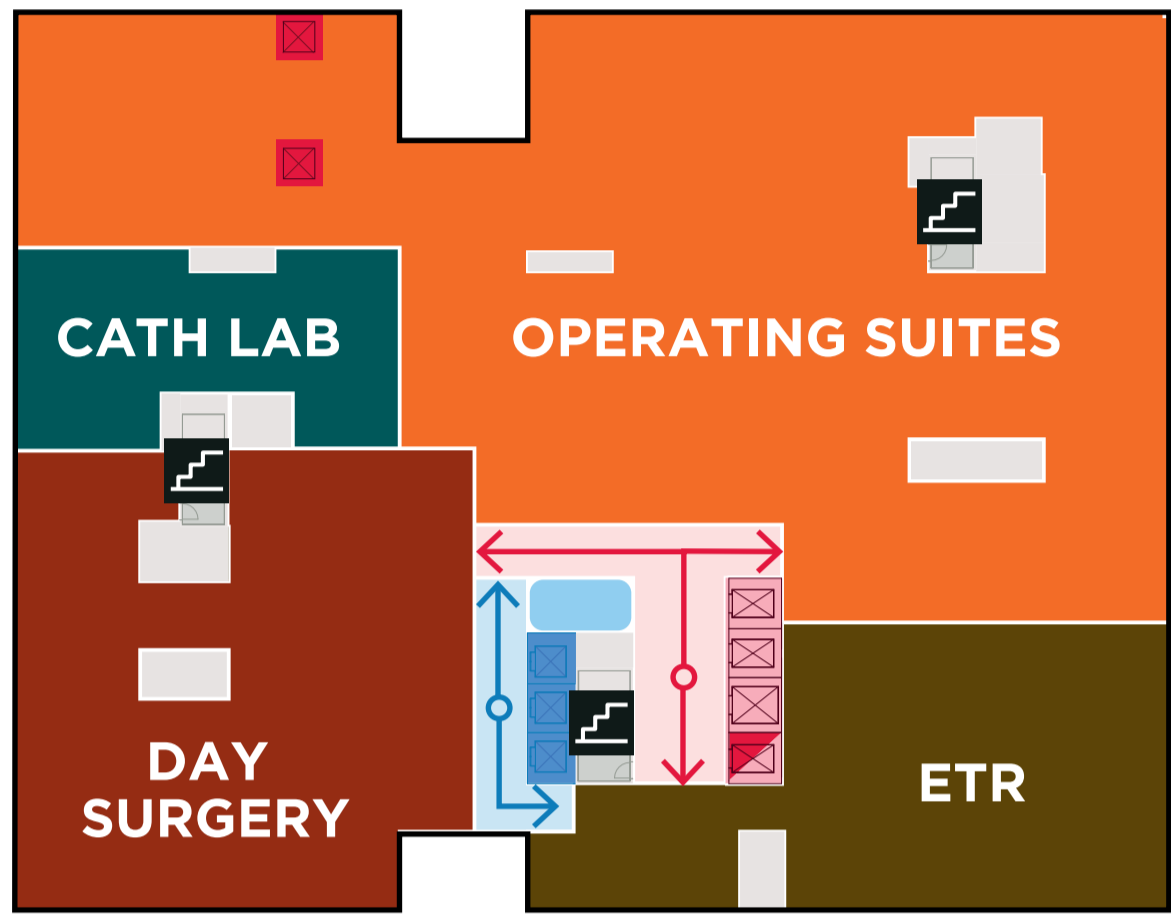
Clinical Services Building floor plans

Legend

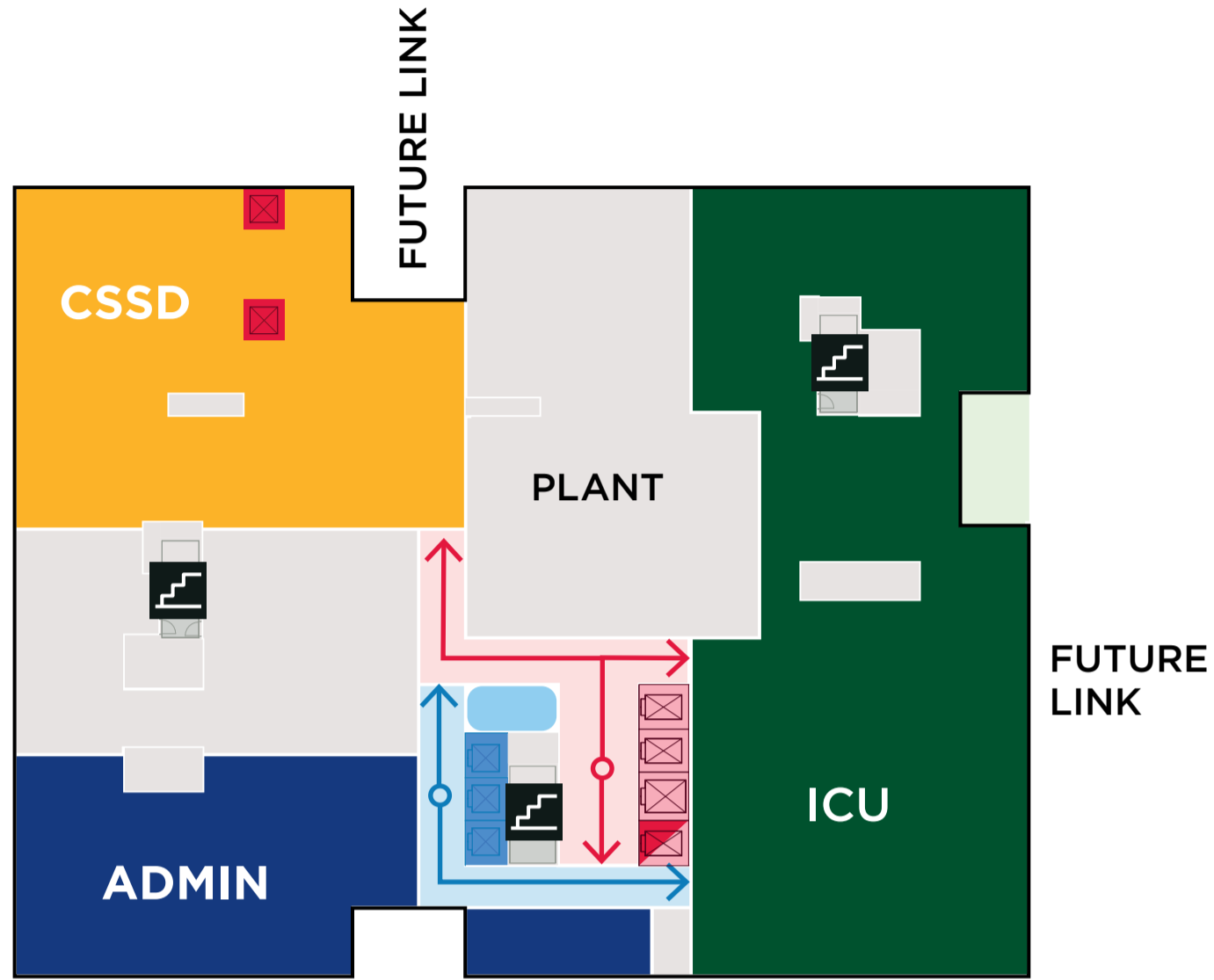
- Public Circulation
- Staff Circulation
- Public Corridor
- Staff Corridor
- Stairs



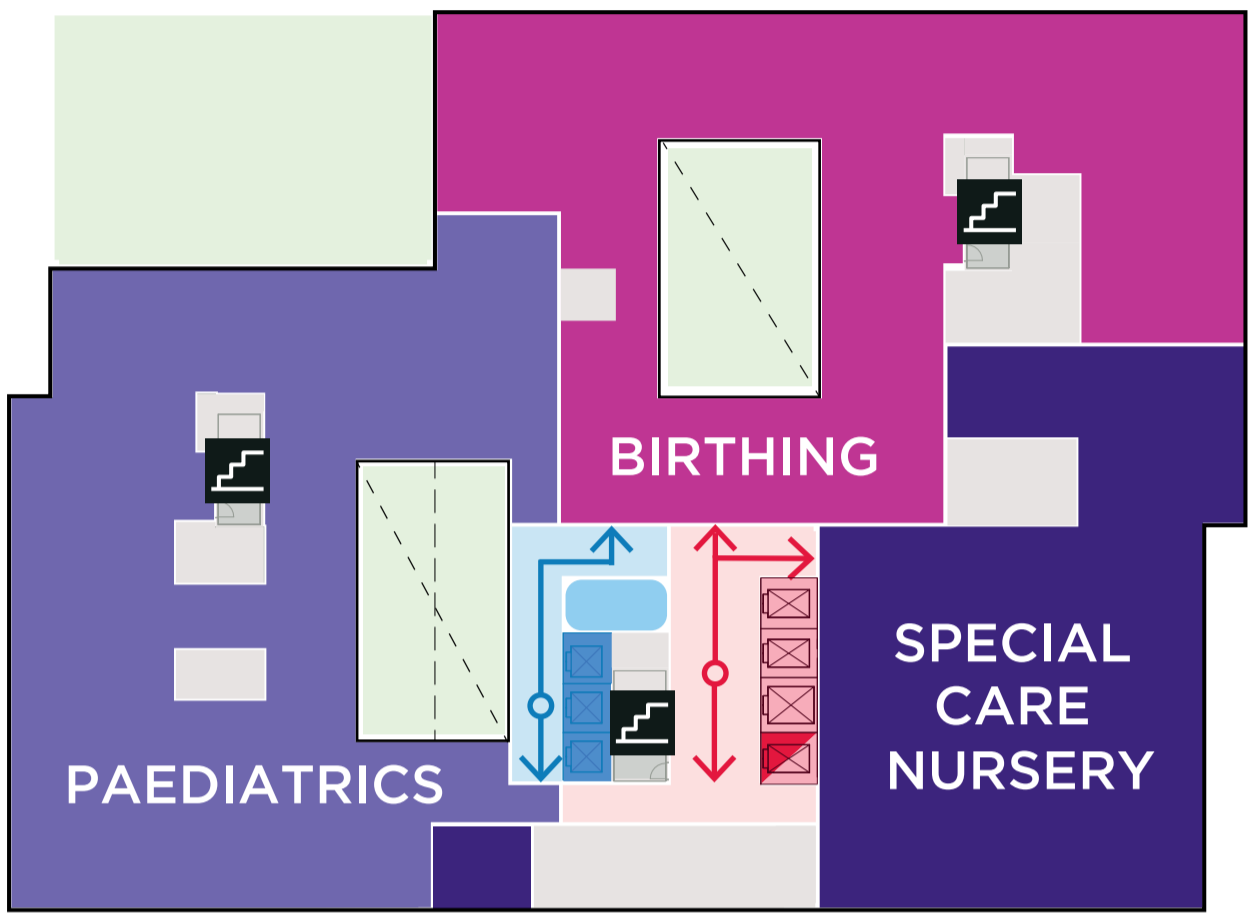
Level 0



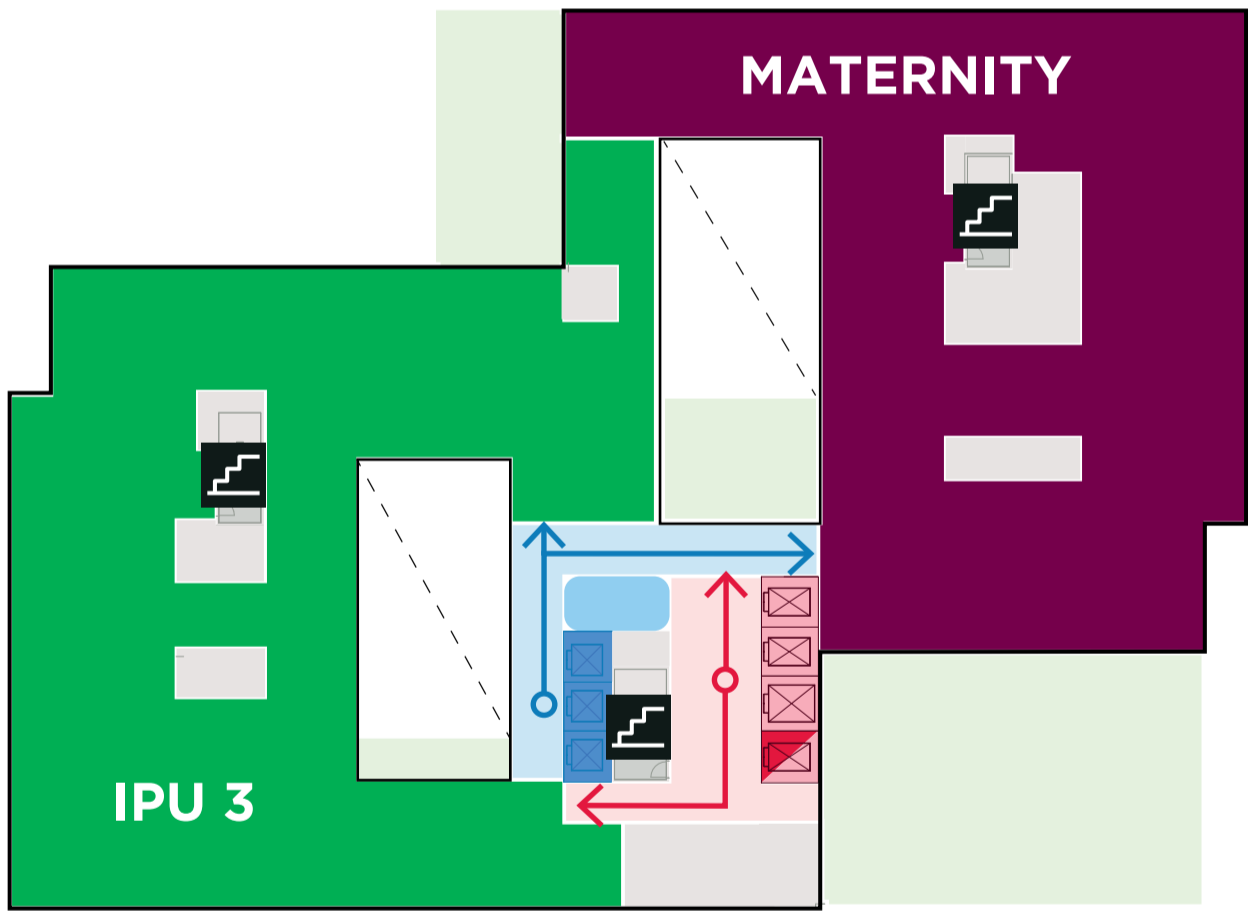
Level 1



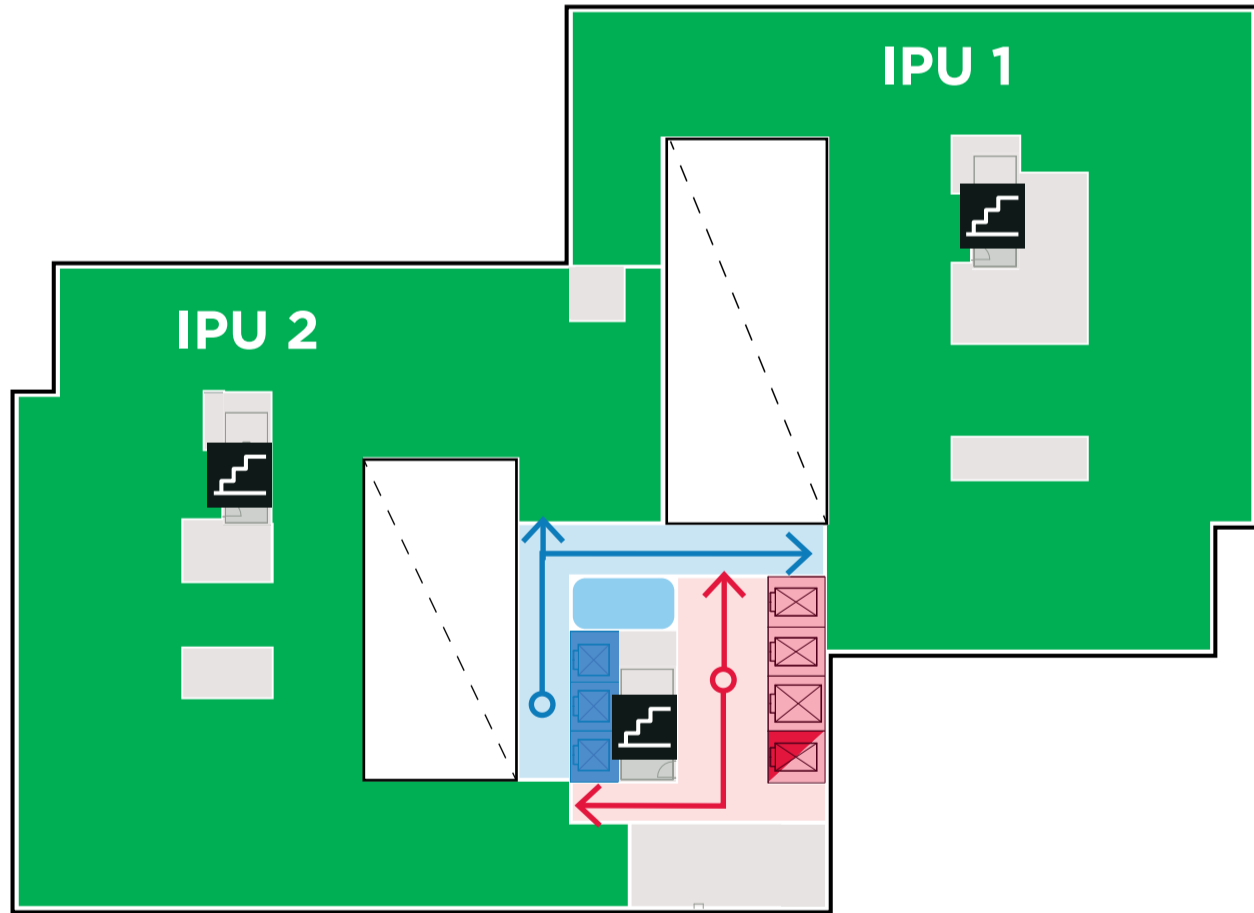
Level 2



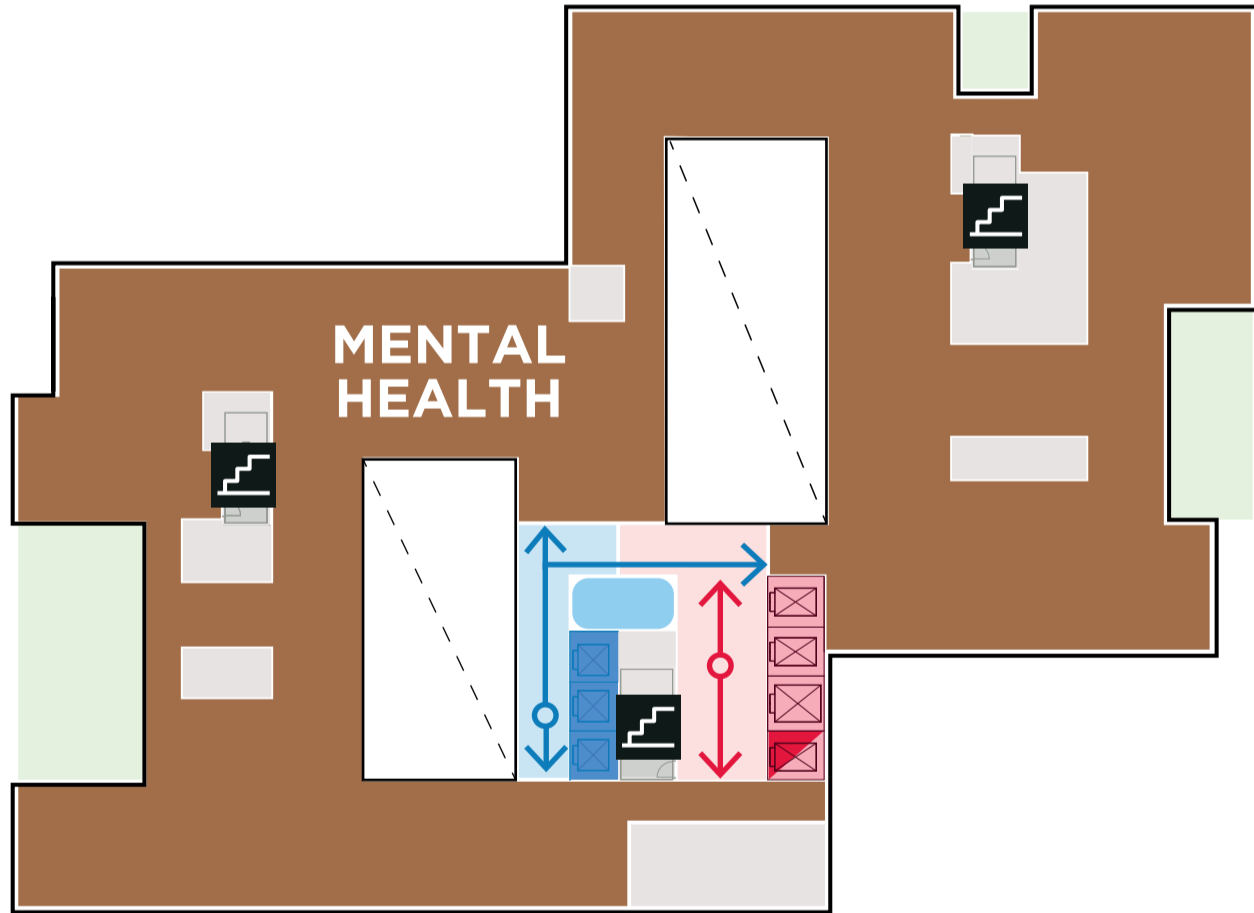
Level 3



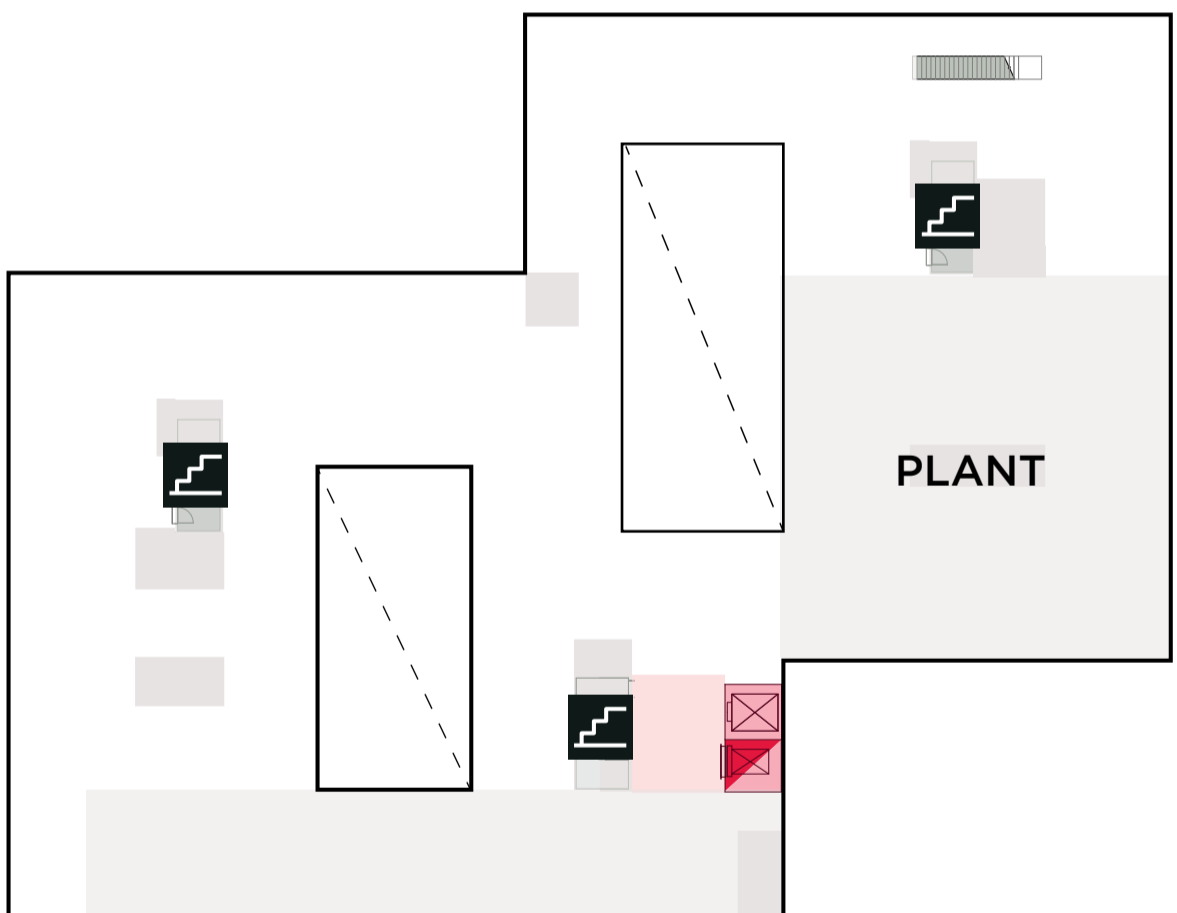
Level 4



Level 5



Level 6



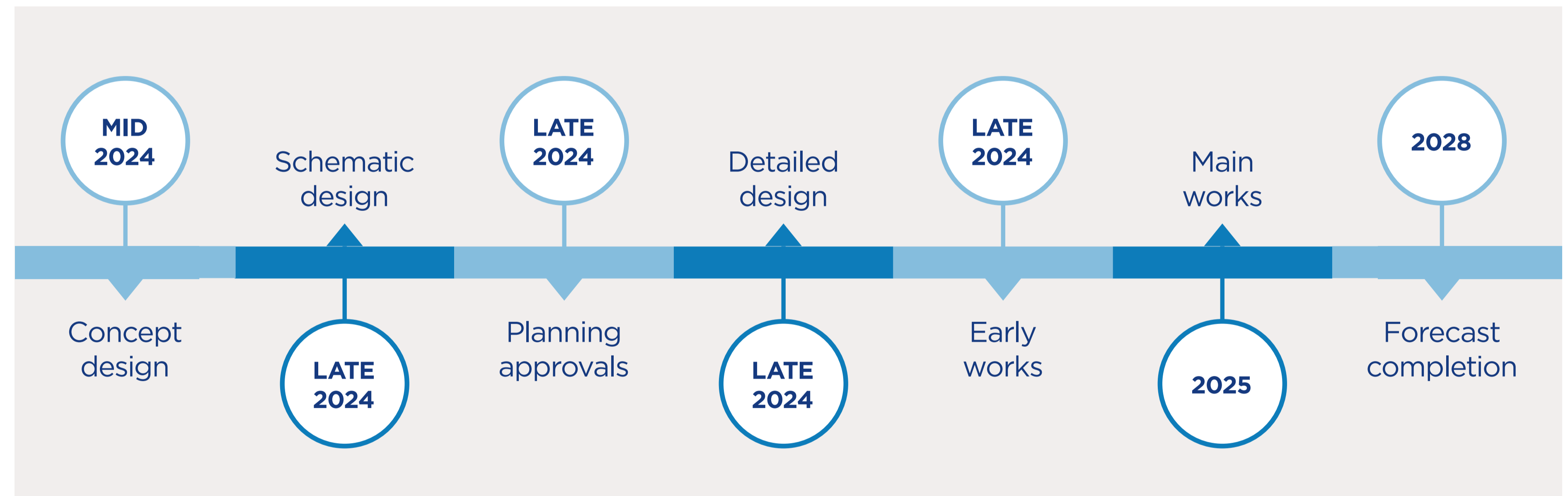
Level 7



Albury Wodonga
Regional Hospital project

When finished, the new hospital will:

- consolidate complex care hospital services on the Albury Campus
- improve safety for patients
- reduce the duplication of services
- reduce the need for urgent travel between Wodonga and Albury Campuses
- attract skilled and specialised medical, nursing, allied health and support staff
- create a regional health hub with the investment of health services already on site and the additional Clinical Services Building
- retain existing high value health assets, including the recently completed Emergency Department expansion
- enable further growth in sub-acute, day surgical and ambulatory care at Wodonga Hospital Campus by relocating existing inpatient maternity, birthing, neonatal care and day medical services to Albury Campus
- deliver a mix of new and refurbished facilities.



The project is expected to include:

	New 7-storey Clinical Services Building
	More than 80 additional new beds for medical and surgical inpatients across 3 new inpatient units with 60% single rooms and remainder in double rooms
	Enhanced Intensive Care Unit
	Enhanced Maternity and birthing services, including a special care nursery
	Surgical and operating theatres available, including a hybrid theatre plus procedure room
	New Cardiac Catheter Lab
	32-bed Mental Health inpatient unit to replace and expand the existing Nolan House current 24-bed service

	New central sterile supply department adjacent to theatres
	Expanded ambulatory care, cardiac diagnostics and allied health therapies
	New hospital main entrance and public drop-off zone from Keene Street
	Aboriginal Family Lounge, Multi-faith Centre and Retail opportunities
	Additional at-grade and multi-storey car parking
	Reburbishment works to existing services
	Northeast building

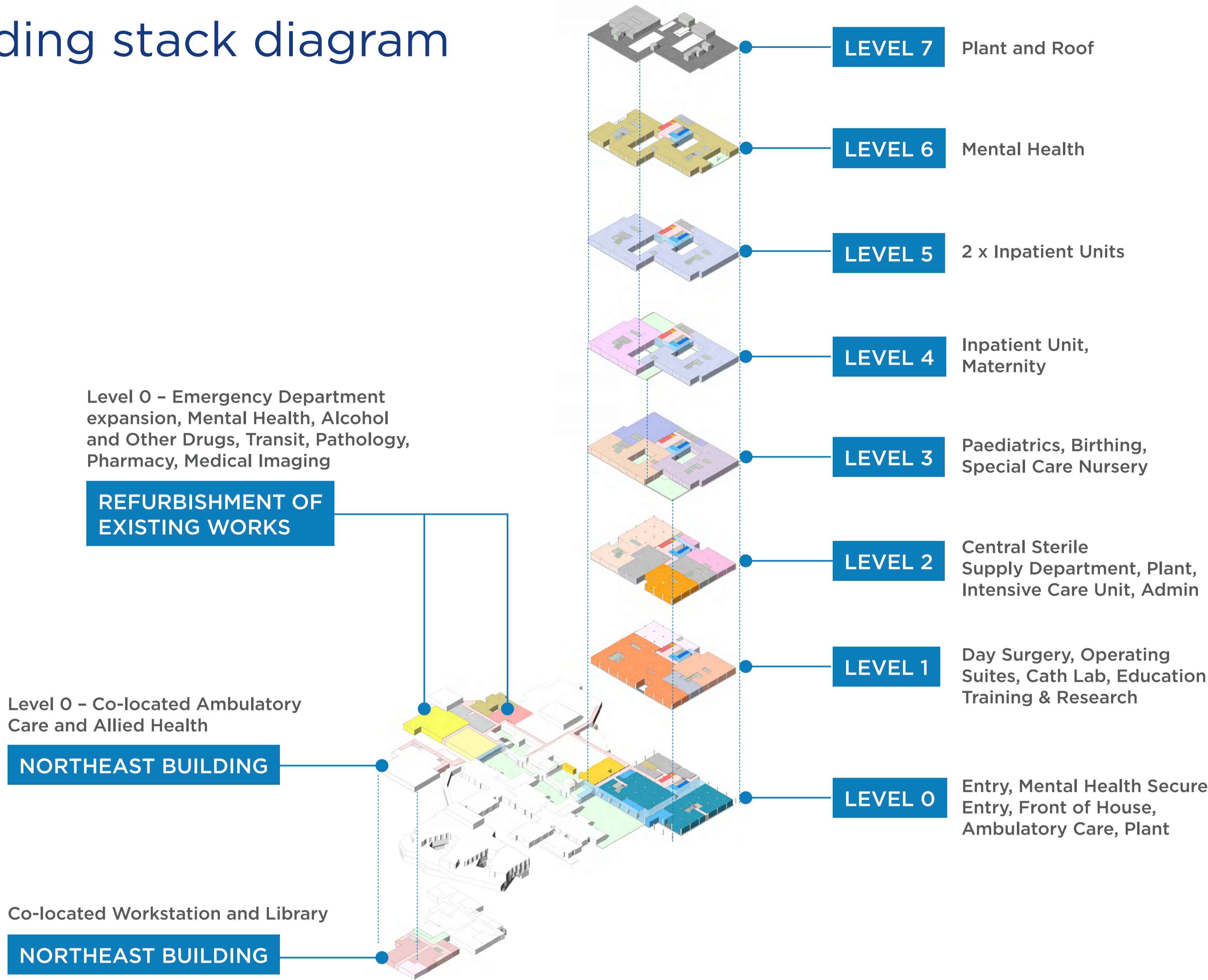


Albury Wodonga Regional Hospital project

Clinical Services Building stack diagram

Legend

- Ambulatory care
- Front of house
- Day surgery
- Operating suites
- Cath lab
- Education, Training & Research
- Central Sterile Supply Department
- Intensive Care Unit
- Plant
- Admin
- Paediatrics
- Special care nursery
- Birthing
- Maternity
- Inpatient Unit
- Mental health
- Emergency Department expansion
- Mental Health, Alcohol and Other Drugs
- Transit
- Pathology
- Pharmacy
- Medical imaging
- Public circulation corridor
- Staff circulation corridor
- Existing building



Albury Wodonga Regional Hospital project