

CONFIDENTIAL**Waste Management & Recycling Plan - NSW Rev 1.7 21 July 2022**

BINGO Industries offers a complete, comprehensive solution to the management and recycling of wastes to assure compliance with clients' waste management policy. BINGO Recycling Centre's combine bin storage, waste collection, waste recycling and waste transfer to service the building and construction industry and domestic waste management needs in New South Wales. Wastes collected by BINGO Industries are taken directly to one of these facilities where approximately 90% of wastes are converted to recovered resources.

BINGO Recycling Centre Alexandria EPL No. 4679
BINGO Recycling Centre Artarmon EPL No. 20763
BINGO Recycling Centre Auburn EPL No. 10935
BINGO Recycling Ecology Park Eastern Creek EPL No. 20121
BINGO Recycling Centre Greenacre EPL No. 20847
BINGO Recycling Centre Kembla Grange EPL No. 20601
BINGO Recycling Centre Mortdale EPL No. 20622
BINGO Recycling Centre Patons Lane EPL No. 21259
BINGO Recycling Centre Revesby EPL No. 20607
BINGO Recycling Centre Tomago EPL No. 20585

As can be expected waste materials inwards vary considerably and are delivered to the Recycling Centres in tipping and non-tipping vehicles or in skip bins. Of the wastes inwards approximately 90% is recovered and recycled as materials outwards and the balance 10% to landfill. Waste materials inwards are processed to achieve the maximum recovery of resources and the minimum of un-recoverable material for disposal.

Typical Composition of BINGO's Wastes Inwards

Wastes Inwards	Percentage (approx.)
Heavy Recyclable Materials	45%
Light Recyclable Materials	35%
Metals	10%
Non-Recyclable Materials	10%
Total	100%

Heavy Recyclable Materials:

- Soil
- Dirt
- Sand
- Rubble
- Brick
- Concrete
- Tiles
- Stone
- Asphalt

Light Recyclable Materials:

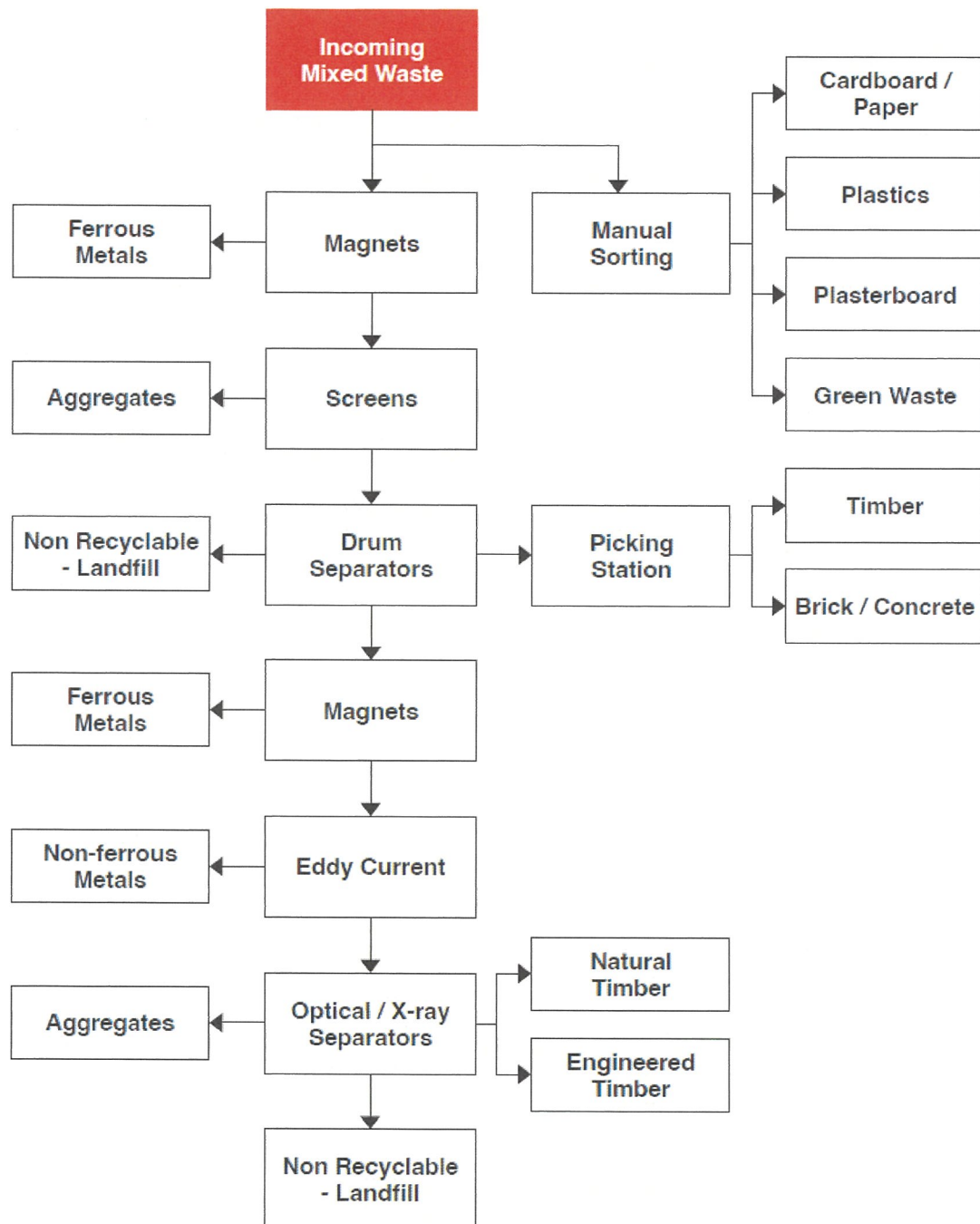
- Timber
- Green Waste
- Cardboard/ Paper
- Plastic
- Plasterboard

Metals:

- Ferrous (steel, black iron)
- Non-Ferrous (copper, wire, aluminium, stainless)

At the Resource Recovery Facility an effective waste processing procedure is applied. See Materials Flow Diagram (below). Wastes inwards unloaded onto the sorting area where the waste is raked with a hydraulic excavator to expose the contents and where recyclable materials are hand and machine sorted.

BINGO Recycling Centre Materials Flow Diagram



In summary, BINGO Industries take all their mixed waste skip bins directly to EPA Licensed Recycling Centres. From there the waste is sorted and separated into the following material classes for processing and recycling.

Type of Material	Where Processed/ Recycled	How Processed/ Recycled
Heavy Recyclable Materials (soil, dirt, sand, rubble, concrete, brick, tiles, asphalt, stone)	<ul style="list-style-type: none"> BINGO Recycling Centres 	Re-processed into recycled products (such as aggregates and roadbase) by crushing and screening.
Timber / Green Waste	<ul style="list-style-type: none"> Clean & Green Organics BINGO Recycling Ecology Park 	Re-processed into woodchip and mulch by shredding.
Metal / Steel	<ul style="list-style-type: none"> Sell & Parker CMI SIMS Sydney Copper Scraps Infrabuild 	Re-processed into new metal and steel products by shearing, baling and re-smelting.
Brick / Concrete	<ul style="list-style-type: none"> BINGO Recycling Ecology Park 	Re-processed into recycled products (such as aggregates and roadbase) by crushing and screening.
Cardboard / Paper / Plastic	<ul style="list-style-type: none"> Cleanaway 	Re-processed into new cardboard, paper and plastic products by breaking down the material into a form for re-use.
Plasterboard	<ul style="list-style-type: none"> ReGyp 	Re-processed into gypsum products by shredding and screening.
General Waste	<ul style="list-style-type: none"> Eastern Creek Landfill 	n/a

- **BINGO Recycling Centres**
76-82 Burrows Road, Alexandria NSW 2015
10 Mclachlan Ave, Artarmon NSW 2064
3-5 Duck Street, Auburn NSW 2144
Honeycomb Drive, Eastern Creek NSW 2766
35 Wentworth St, Greenacre NSW 2190
50 Wyllie Road, Kembla Grange NSW 2526
20 Hearne Street, Mortdale NSW 2223
Patons Lane, Orchard Hills NSW 2748
37-51 Violet Street, Revesby NSW 2212
29 Laverick Avenue, Tomago NSW 2322
- **Clean & Green Organics**
769 The Northern Rd, Bringelly NSW 2566
- **Sell & Parker**
45 Tattersall Road, Blacktown NSW 2148
- **CMI**
38 York Road, Ingleburn NSW 2565
- **SIMS**
43 Ashford Ave, Milperra NSW 2214
76 Christie St, St Marys NSW 2760
- **Sydney Copper Scraps**
130 Adderley St, Auburn NSW 2760
- **Infrabuild**
107 Sparke St, Hexam NSW 2322
79 Stephen Rd, Botany NSW 2019
- **Cleanaway**
44 Claremont Ave, Greenacre NSW 2190
- **ReGyp**
30 Nangar St, Cowra NSW 2794
- **Eastern Creek Landfill**
Honeycomb Drive, Eastern Creek NSW 2766