



HEALTH INFRASTRUCTURE

# Partner Briefing

11 October 2023

[hinfra.health.nsw.gov.au](https://hinfra.health.nsw.gov.au)



# ACKNOWLEDGEMENT OF COUNTRY

In the spirit of reconciliation Health Infrastructure acknowledges the Traditional Custodians of country throughout Australia and their connections to land, sea and community. We pay our respect to their elders past and present and extend that respect to all Aboriginal and Torres Strait Islander peoples today.

# Agenda

## Briefing

- Current environment
- Capital pipeline
- Portfolio management and assurance
- Planning and design
- Safety and wellbeing

## Executive Panel

- Executive Leadership Team

# Current environment and challenges

## Cost escalation



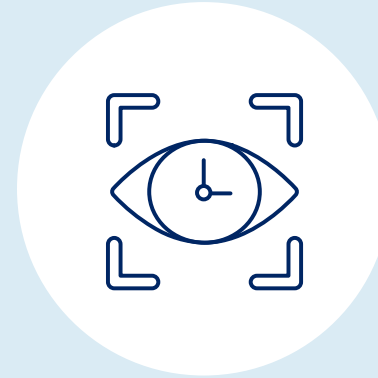
Variability in pricing making it challenging to estimate project costs

## Sector challenges



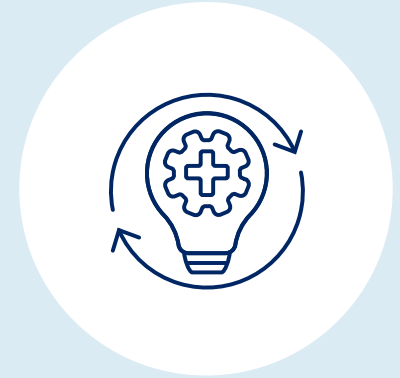
Huge pipeline across Australia, drives supply and skills shortages

## Government reviews



Infrastructure commitments, use of consultants and health funding

## Sustainable system



Long-term sustainability of system requires increased focus on whole-of-life

# Health Infrastructure's priorities

## Delivery through collaboration



Partnerships and collaboration to address our shared challenges and opportunities

## Portfolio management and assurance



Best practice processes and systems to successfully plan, procure and deliver

## Sustainability – in all its forms



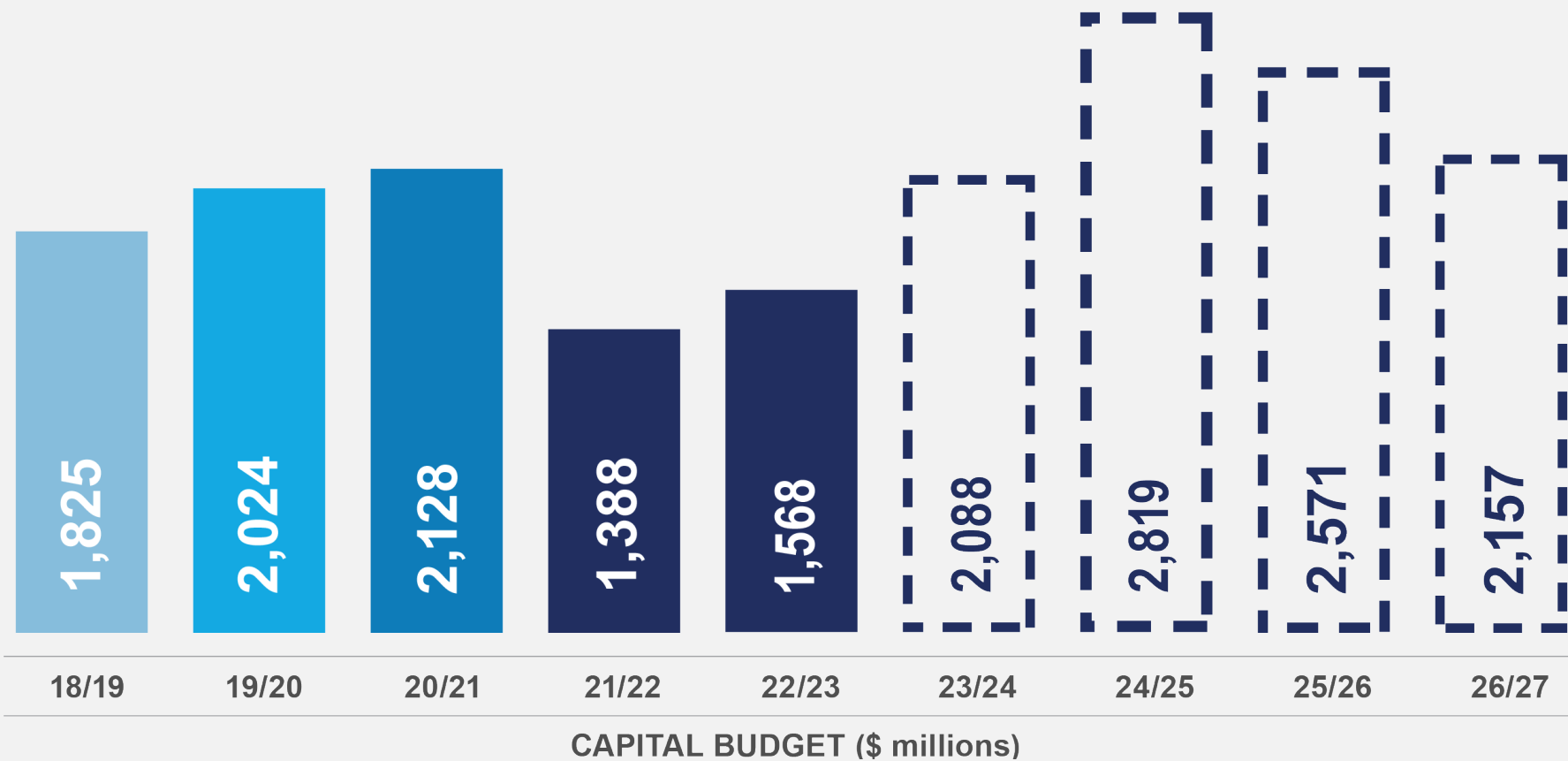
Increasing and wide-reaching focus on financial, environmental and social sustainability

## Safety and wellbeing



Safety, health and wellbeing initiatives to address diversity and positively impact culture across projects

# NSW budget and pipeline of work



**\$13.8 billion**  
in health infrastructure  
projects to 2026-2027

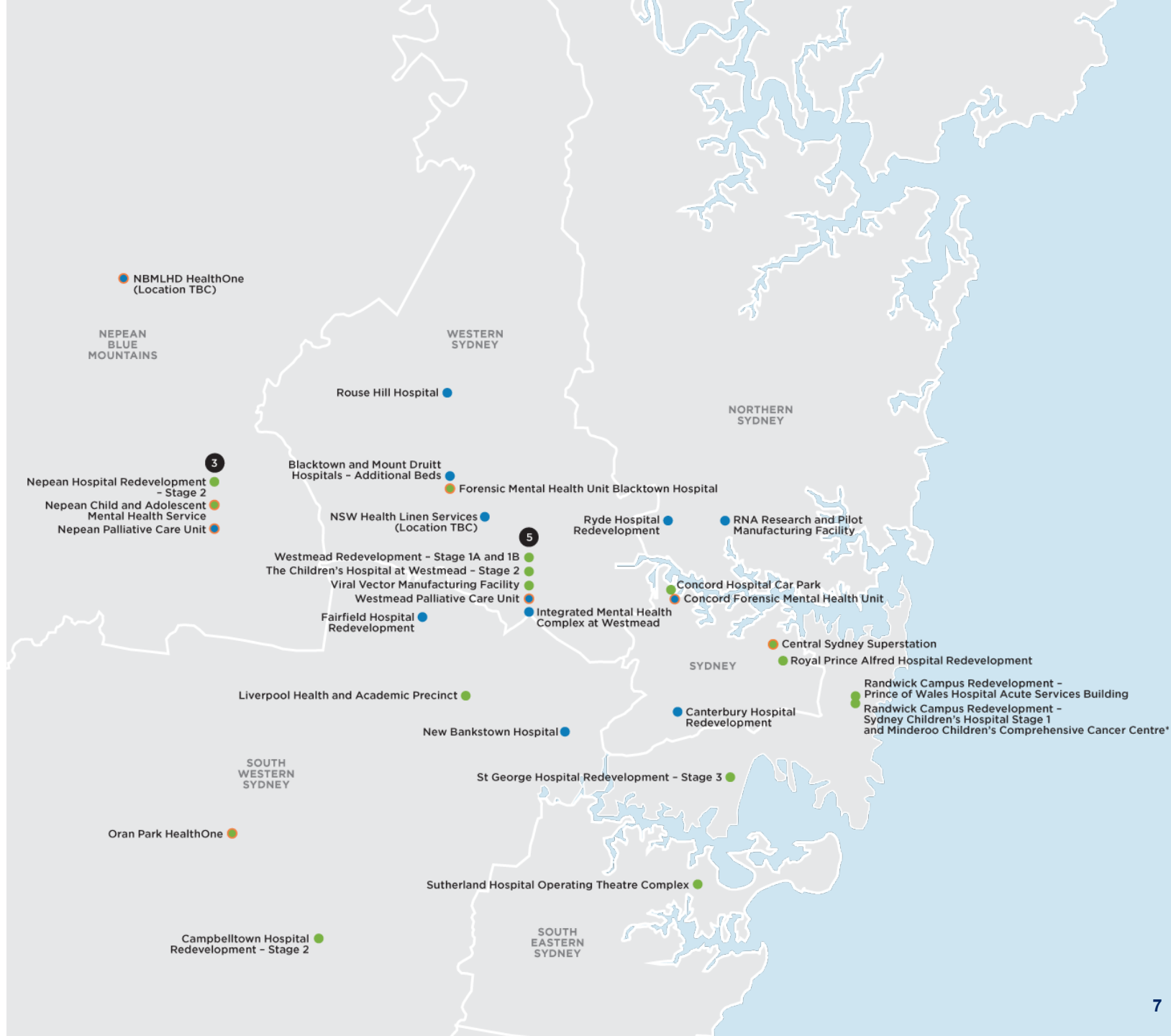
**Over 100**  
capital works  
projects underway

As at September 2023



- PROJECTS IN PLANNING
- WORKS IN PROGRESS
- STATEWIDE PROGRAMS
- \* PROJECT WITH AUSTRALIAN GOVERNMENT FUNDING CONTRIBUTION

Health Infrastructure | 11 October 2023



# Current projects across regional NSW





# Upcoming Statement of Participation (SOP) for consultants

- Gauge interest and preferences for tendering
- **Project Managers, Architects and Cost Advisors**
- **SCM1191** and **SCM10611** categories:
  - Architecture – Health (1191-203)
  - Architecture – Health Infrastructure (1191-220)
  - Architecture – Health (10611- 2B)
  - Quantity Surveying (1191-301)
  - Project Manager – Health Infrastructure (1191-336)
  - Project Manager – Health Infrastructure (10611-1B).



# Consultant SOP and tenders – projects

- Blacktown and Mount Druitt Hospitals – Additional beds
- Canterbury Hospital Redevelopment
- Fairfield Hospital Redevelopment
- NSW Health Linen Services Facility
- Rouse Hill Hospital
- Wollongong Hospital Upgrades
- Blue Mountains Hospital Redevelopment
- Southern NSW LHD Multipurpose Services site
- New hospital in Western Parklands City region
- NSW Ambulance Infrastructure Program (Project Managers only).



Projects will tender early 2024, except for Blacktown/Mount Druitt and Canterbury hospitals which will tender Q4 2023.



# 2024 construction tenders

- Bathurst Hospital Redevelopment
- Broken Hill Acute Mental Health Inpatient Unit
- Broken Hill Hospital Emergency Department
- Finley Hospital Upgrade
- Glen Innes Hospital Redevelopment
- Integrated Mental Health Complex at Westmead
- Manning Base Hospital Redevelopment Stage 2
- Rouse Hill Hospital
- Temora Hospital Redevelopment.

Current forecast. Subject to change.





# Portfolio management and assurance

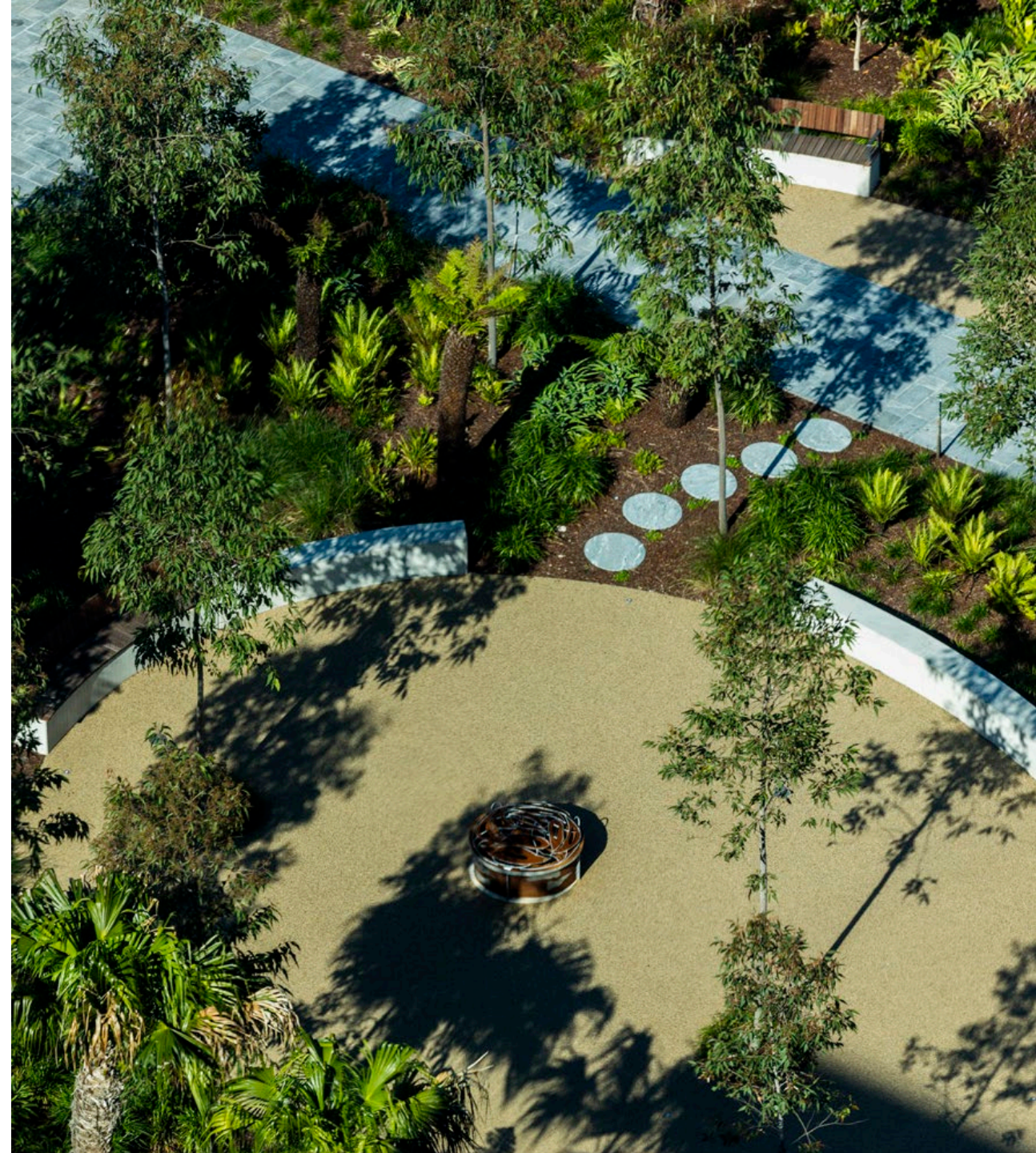
- New **Assurance Framework** implements **mandatory assurance reviews** conducted by independent industry advisers from HI Expert List.
- Aligns with INSW **Infrastructure Investor Assurance Framework** for projects over \$10 million.
- Projects will move through **INSW Gateway Reviews** and **HI Assurance Reviews** without duplication.
- Together, these are providing quantifiable recommendations to help **drive learning and innovations**.





# Sustainability

- NSW Government target: **50% reduction in carbon emissions by 2030** and **net zero emissions by 2050**.
- NSW Health has introduced **sustainability metrics and targets**.
- HI implementation focused on **improving data collection** and reporting, **expanding mandatory requirements** and increasing visibility of **project successes and innovations**.
- Work with industry partners **to integrate social, economic and environmental** considerations into projects.





# Design Guide for Health

- **Design Guide for Health: Spaces, Places and Precincts** released June 2023.
- Outlines **principles of good design** and how **well-designed health facilities contribute to the health and wellbeing** of communities.
- Updated **Design Assurance Review** process to embed requirements.
- Implementation will continue through 2024.





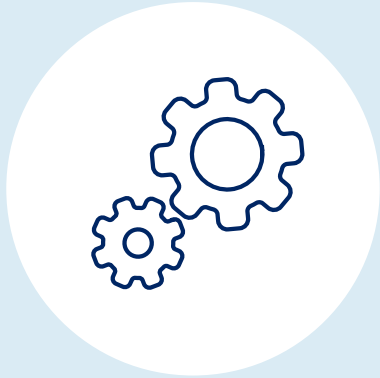
# Design standardisation

- A key priority to unlock **innovation and efficiency**, and **reduce operational costs**.
- **Catalogue of specific design standards** in development to guide planning, design, construction and operation of projects.
- 2024 work program in development and will require industry input.



# Safety and Wellbeing

## SHaW strategy



Key initiatives to drive safety, and wellbeing collaboration with delivery partners

## Ways of working



Continue to look for opportunities like 5-day work week, for greater worker wellbeing

## Skills legacy



Support industry to develop skilled construction workforce

## Diversity focus



Working together to increase female participation across trades and non-traditional roles



# Executive Leadership Panel



**Amanda Bock**  
Executive Director  
Rural & Regional



**Leisa Rathborne**  
A/Executive Director  
Assurance & Advisory



**Troy Harvey**  
Executive Director  
Development &  
Commercial



**Emma Skulander**  
Chief Operating Officer



**Bruno Zinghini**  
Executive Director  
Western



**Hayley Bell**  
A/Executive Director  
Northern



**Rebecca Wark**  
Chief Executive

