

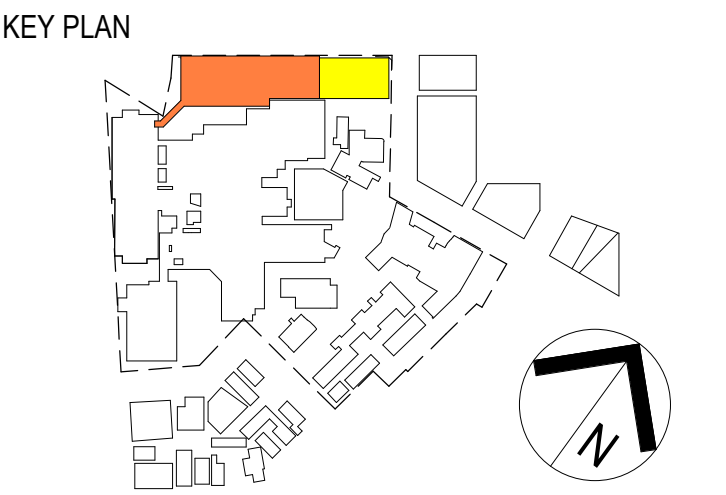
REV	DATE	AMENDMENT
8	31.07.23	ISSUED FOR MOD 2
7	11.07.23	ISSUED FOR MOD 2
6	07.03.23	ISSUED FOR MOD
5	27.02.23	DRAFT ISSUE FOR MOD
4	20.06.22	ISSUED FOR BOMA
3	01.11.21	FINAL CONCEPT ISSUE
2	13.10.21	CONCEPT DESIGN - FROZEN ISSUE
1	14.09.21	CONCEPT DESIGN

NOTES

1. DO NOT SCALE DRAWINGS. WRITTEN DIMENSIONS GOVERN.
2. ALL DIMENSIONS ARE IN MILLIMETRES UNLESS NOTED OTHERWISE.
3. ALL DIMENSIONS SHALL BE VERIFIED ON SITE BEFORE PROCEEDING WITH THE WORK. JACOBS SHALL BE NOTIFIED IN WRITING OF ANY DISCREPANCIES.
4. THIS DRAWING MUST BE READ IN CONJUNCTION WITH ALL RELEVANT CONTRACTS, SPECIFICATIONS, REPORTS AND DRAWINGS.
5. ALL DRAWINGS TO BE PRINTED IN COLOUR. DO NOT PHOTOCOPY - PRINT ORIGINAL FROM ELECTRONIC FILE FOR HARD COPY.
6. VARIATIONS TO WORK SHOWN MUST BE BROUGHT TO THE PRINCIPALS ATTENTION AND APPROVED IN WRITING BEFORE PROCEEDING.
7. THIS DRAWING IS COPYRIGHT AND THE PROPERTY OF THE PRINCIPAL AND MUST NOT BE REPRODUCED, COPIED OR USED WITHOUT THE PERMISSION OF THE AUTHOR.
THIS DRAWING IS AN UNCONTROLLED COPY UNLESS NOTED OTHERWISE.

- GDA
- AMBULATORY CARE
 - COMMUNITY NURSING
 - FOH
 - PLANT
 - TRAVEL - PUBLIC
 - TRAVEL - STAFF
 - NON CLINICAL SUPPORT

DRAWING TO BE PRINTED IN COLOUR



SERVICE PROVIDER

JACOBS

Level 7, 177 Pacific Highway,
North Sydney, NSW, 2060
Tel: +61 2 9928 2100
Fax: +61 2 9928 2510
Web: jacobson.com

PROJECT
**ST GEORGE HOSPITAL
STAGE 3**

PROJECT NO.
IA256500

DRAWING TITLE
**DEPARTMENT PLAN -
GROUND**

STATUS
DESIGN DEVELOPMENT

DRAWN
BA

DESIGNED
DG/GA

CHECKED
WB

APPROVED
CY

SCALE @ B1
1 : 200

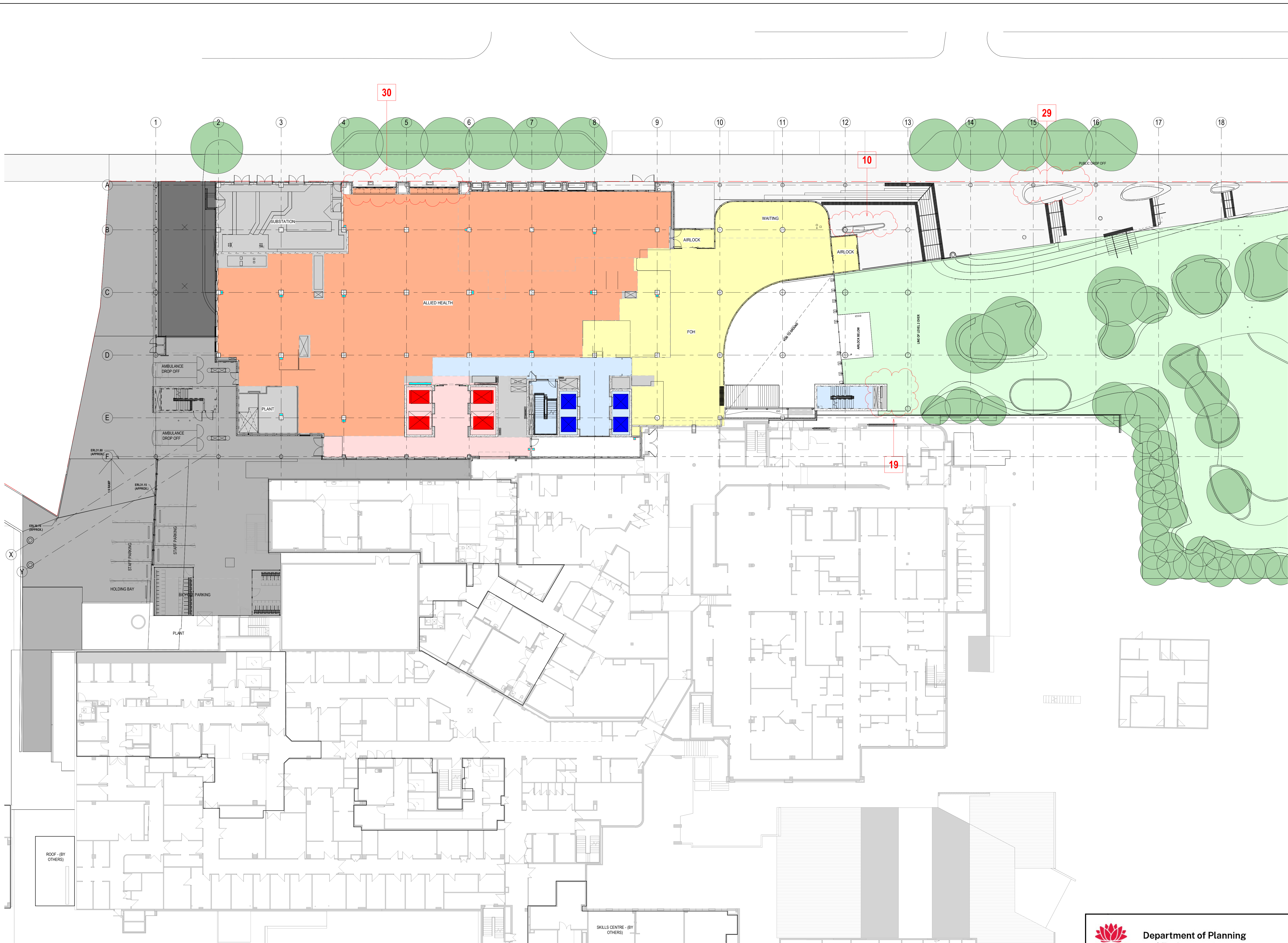
DRAWING NO.
SGHS3-AR-DG-120G

REVISION
8

Department of Planning
and Environment

Issued under the Environmental Planning and Assessment Act 1979

Approved Section 4.55(1A) Application No: SSD-39170713-Mod-2
Granted: 16 November 2023 Sheet No: 1 of 9 Signed: PN



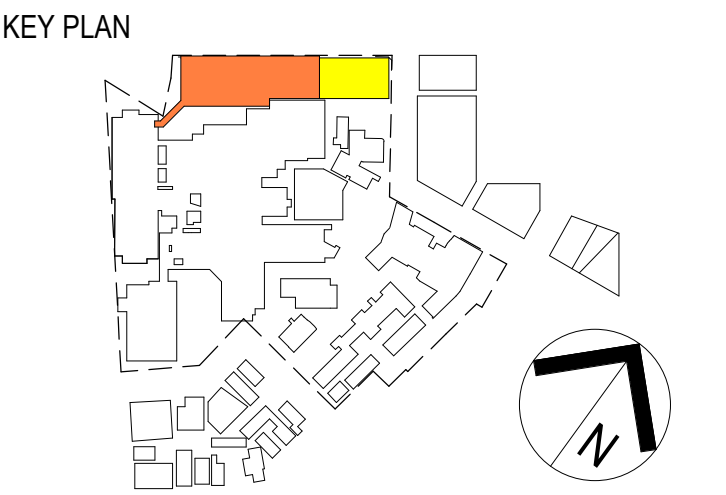
REV	DATE	AMENDMENT
9	15/09/23	ISSUED FOR MOD 2
8	31/07/23	ISSUED FOR MOD 2
7	11/07/23	ISSUED FOR MOD 2
6	07/03/23	ISSUED FOR MOD
5	27/02/23	DRAFT ISSUE FOR MOD
4	20/04/22	ISSUED FOR SODA
3	01/11/21	FINAL CONCEPT ISSUE
2	13/10/21	CONCEPT DESIGN - FROZEN ISSUE
1	14/09/21	CONCEPT DESIGN

NOTES

1. DO NOT SCALE DRAWINGS. WRITTEN DIMENSIONS GOVERN.
2. ALL DIMENSIONS ARE IN MILLIMETRES UNLESS NOTED OTHERWISE.
3. ALL DIMENSIONS SHALL BE VERIFIED ON SITE BEFORE PROCEEDING WITH THE WORK. JACOBS SHALL BE NOTIFIED IN WRITING OF ANY DISCREPANCIES.
4. THIS DRAWING MUST BE READ IN CONJUNCTION WITH ALL RELEVANT CONTRACTS, SPECIFICATIONS, REPORTS AND DRAWINGS.
5. ALL DRAWINGS TO BE PRINTED IN COLOUR. DO NOT PHOTOCOPY - PRINT ORIGINAL FROM ELECTRONIC FILE FOR HARD COPY.
6. VARIATIONS TO WORK SHOWN MUST BE BROUGHT TO THE PRINCIPALS ATTENTION AND APPROVED IN WRITING BEFORE PROCEEDING.
7. THIS DRAWING IS COPYRIGHT AND THE PROPERTY OF THE PRINCIPAL AND MUST NOT BE RETAINED, COPIED OR USED WITHOUT THE PERMISSION OF THE AUTHOR.
THIS DRAWING IS AN UNCONTROLLED COPY UNLESS NOTED OTHERWISE.

- GDA
- AMBULATORY CARE
 - FOH
 - PLANT
 - TRAVEL - PUBLIC
 - TRAVEL - STAFF

DRAWING TO BE PRINTED IN COLOUR



SERVICE PROVIDER

Jacobs

Level 7, 177 Pacific Highway,
North Sydney, NSW, 2060
Tel: +61 2 9928 2100
Fax: +61 2 9928 2510
Web: jacobson.com

PROJECT

**ST GEORGE HOSPITAL
STAGE 3**

PROJECT NO.

IA256500

DRAWING TITLE

**DEPARTMENT PLAN -
LEVEL 1**

STATUS

FOR INFORMATION

DRAWN

BA

DESIGNED

DG/GA

CHECKED

WB

APPROVED

CY

SCALE @ B1

1 : 200

DRAWING NO.

SGHS3-AR-DG-1201

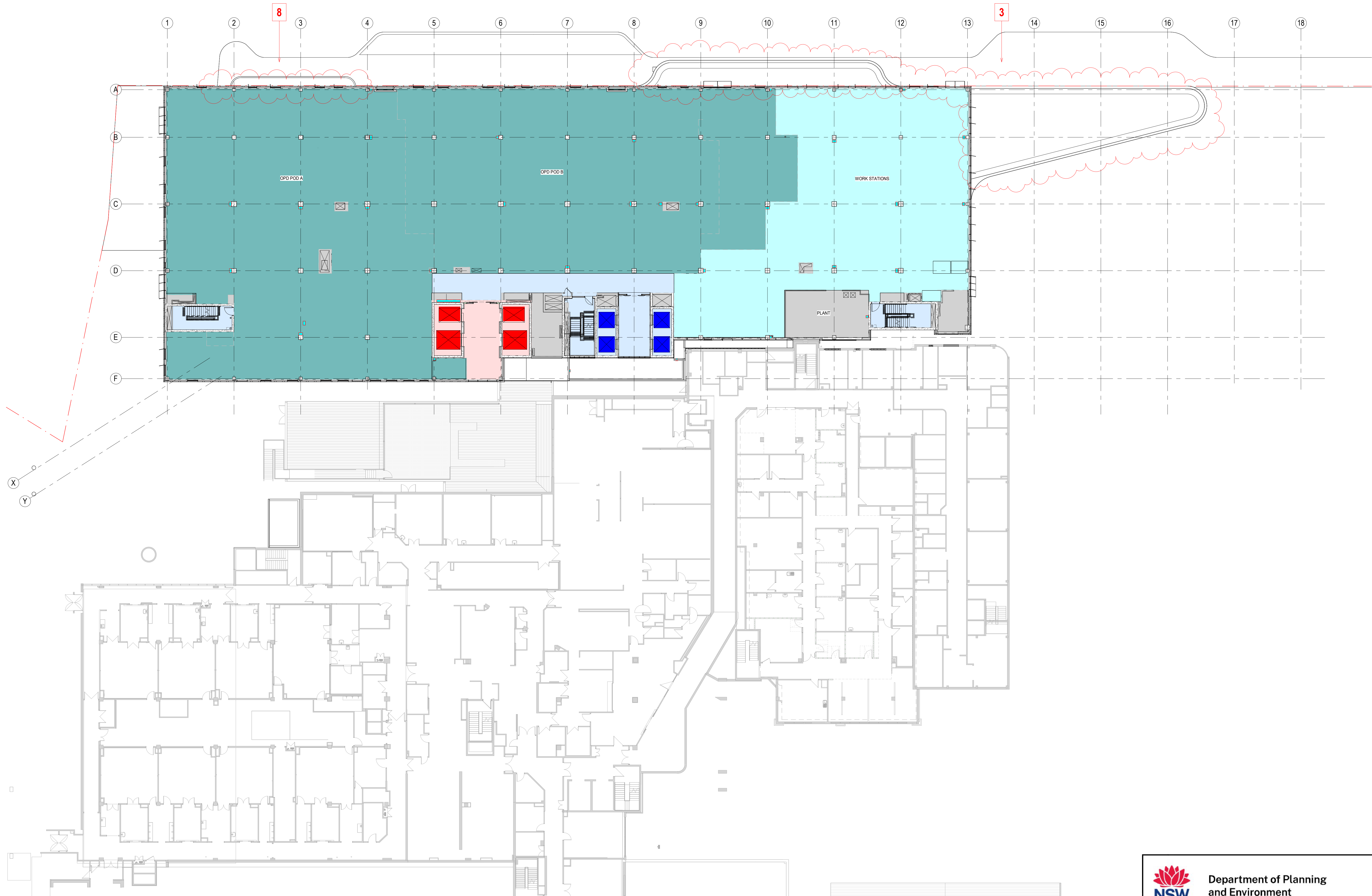
REVISION

9

Department of Planning and Environment

Issued under the Environmental Planning and Assessment Act 1979

Approved Section 4.55(1A) Application No: SSD-39170713-Mod-2
Granted: 16 November 2023 Sheet No: 2 of 9 Signed: PN



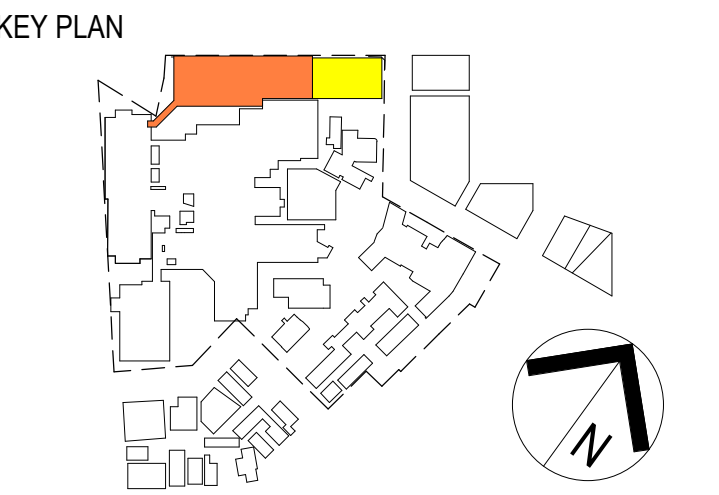
REV	DATE	AMENDMENT
1	14.09.21	CONCEPT DESIGN
2	13.10.21	CONCEPT DESIGN - FROZEN ISSUE
3	01.11.21	FINAL CONCEPT ISSUE
4	28.04.22	ISSUED FOR SCOA
5	11.07.23	ISSUED FOR MOD 2
6	31.07.23	ISSUED FOR MOD 2
7	15.09.23	ISSUED FOR MOD 2
8	13.10.23	ISSUED FOR MOD 2

NOTES

1. DO NOT SCALE DRAWINGS. WRITTEN DIMENSIONS GOVERN.
2. ALL DIMENSIONS ARE IN MILLIMETRES UNLESS NOTED OTHERWISE.
3. ALL DIMENSIONS SHALL BE VERIFIED ON SITE BEFORE PROCEEDING WITH THE WORK.
4. THIS DRAWING MUST BE READ IN CONJUNCTION WITH ALL RELEVANT CONTRACTS, SPECIFICATIONS, REPORTS AND DRAWINGS.
5. ALL DRAWINGS TO BE PRINTED IN COLOUR. DO NOT PHOTOCOPY - PRINT ORIGINAL FROM ELECTRONIC FILE FOR HARD COPY.
6. VARIATIONS TO WORK SHOWN MUST BE BROUGHT TO THE PRINCIPALS ATTENTION AND APPROVED IN WRITING BEFORE PROCEEDING.
7. THIS DRAWING IS COPYRIGHT AND THE PROPERTY OF THE PRINCIPAL AND MUST NOT BE RETAINED, COPIED OR USED WITHOUT THE PERMISSION OF THE AUTHOR.
THIS DRAWING IS AN UNCONTROLLED COPY UNLESS NOTED OTHERWISE.

- GDA**
- ADMIN
 - PLANT
 - TRAVEL - PUBLIC
 - TRAVEL - STAFF
 - CLINICAL

DRAWING TO BE PRINTED IN COLOUR



SERVICE PROVIDER

Jacobs

Level 7, 177 Pacific Highway,
North Sydney, NSW, 2060
Tel: +61 2 9928 2100
Fax: +61 2 9928 2510
Web: jacobs.com

PROJECT
ST GEORGE HOSPITAL
STAGE 3

PROJECT NO.
IA256500

DRAWING TITLE
DEPARTMENT PLAN -
LEVEL 2

STATUS	
FOR INFORMATION	
DRAWN BA	DESIGNED DG/GA
CHECKED WB	APPROVED CY

SCALE @ B1
1 : 200

DRAWING NO.
SGHS3-AR-DG-1202

REVISION
8

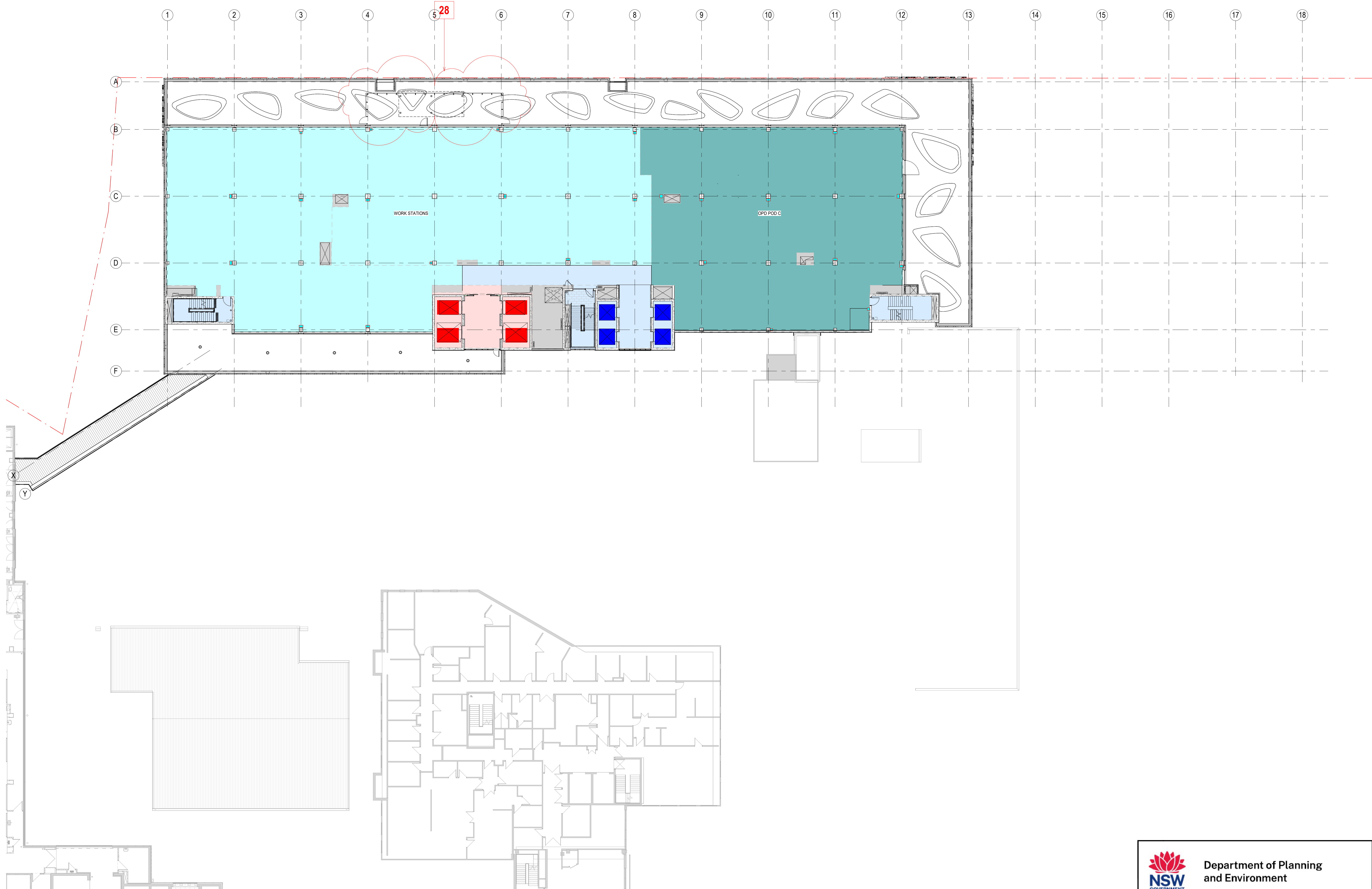


**Department of Planning
and Environment**

Issued under the Environmental Planning and Assessment Act 1979

Approved Section 4.55(1A) Application No: SSD-39170713-Mod-2
Granted: 16 November 2023 Sheet No: 3 of 9 Signed: PN

3/10/2023 4:31:15 PM Autodesk Docs:JIS George Hospital Stage 3 - Main Works\SGHS3-AR-MO-300\MAIN.rvt



5		01/07/23	ISSUED FOR MOD 2
4		01/07/23	ISSUED FOR MOD 2
3		01/11/21	FINAL CONCEPT ISSUE
2		13/10/21	CONCEPT DESIGN - FROZEN ISSUE
1		14/09/21	ADMIN DESIGN
REV	DATE	AMENDMENT	

NOTES/PLANT

1. DO NOT SCALE DRAWINGS. WRITTEN DIMENSIONS GOVERN.
2. ALL DIMENSIONS SHALL BE NOTED OTHERWISE.
3. ALL DIMENSIONS SHALL BE NOTED BEFORE PROCEEDING WITH THE WORK.
4. THIS DRAWING MUST BE READ IN CONJUNCTION WITH ALL RELEVANT CONTRACTS.
5. THIS DRAWING MUST BE READ IN CONJUNCTION WITH ALL RELEVANT CONTRACTS.
6. THIS DRAWING MUST BE READ IN CONJUNCTION WITH ALL RELEVANT CONTRACTS.
7. THIS DRAWING MUST BE READ IN CONJUNCTION WITH ALL RELEVANT CONTRACTS.
8. THIS DRAWING MUST BE READ IN CONJUNCTION WITH ALL RELEVANT CONTRACTS.
9. THIS DRAWING MUST BE READ IN CONJUNCTION WITH ALL RELEVANT CONTRACTS.
10. THIS DRAWING MUST BE READ IN CONJUNCTION WITH ALL RELEVANT CONTRACTS.
11. THIS DRAWING MUST BE READ IN CONJUNCTION WITH ALL RELEVANT CONTRACTS.
12. THIS DRAWING MUST BE READ IN CONJUNCTION WITH ALL RELEVANT CONTRACTS.
13. THIS DRAWING MUST BE READ IN CONJUNCTION WITH ALL RELEVANT CONTRACTS.
14. THIS DRAWING MUST BE READ IN CONJUNCTION WITH ALL RELEVANT CONTRACTS.
15. THIS DRAWING MUST BE READ IN CONJUNCTION WITH ALL RELEVANT CONTRACTS.
16. THIS DRAWING MUST BE READ IN CONJUNCTION WITH ALL RELEVANT CONTRACTS.
17. THIS DRAWING MUST BE READ IN CONJUNCTION WITH ALL RELEVANT CONTRACTS.
18. THIS DRAWING MUST BE READ IN CONJUNCTION WITH ALL RELEVANT CONTRACTS.

LEGEND

- TERRACE

DRAWING TO BE PRINTED IN COLOUR

KEY PLAN

CLIENT

NSW GOVERNMENT | Health Infrastructure

SERVICE PROVIDER

Jacobs

Level 7, 177 Pacific Highway,
North Sydney, NSW, 2060
Tel: +61 2 9928 2100
Fax: +61 2 9928 2510
Web: jacobson.com

PROJECT

**ST GEORGE HOSPITAL
STAGE 3**

PROJECT NO.

IA256500

DRAWING TITLE

**DEPARTMENT PLAN -
LEVEL 4**

STATUS


DESIGN DEVELOPMENT

DRAWN BA	DESIGNED DG/GA
CHECKED WB	APPROVED CY

SCALE @ B1

1 : 200

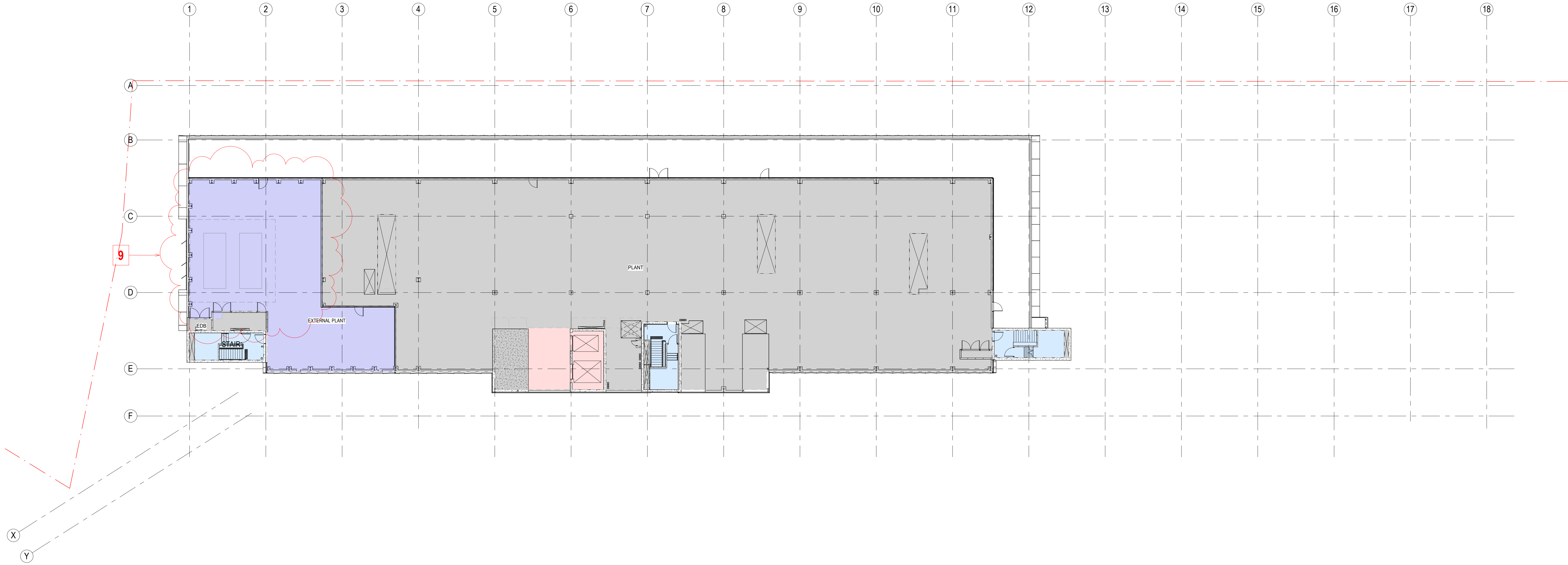
DRAWING NO. SGHS3-AR-DG-1204	REVISION 5
---	-----------------------------

 **Department of Planning and Environment**

Issued under the Environmental Planning and Assessment Act 1979

Approved Section 4.55(1A) Application No: SSD-39170713-Mod-2
Granted: 16 November 2023 Sheet No: 4 of 9 Signed: PN

3/10/2023 4:31:21 PM Autodesk Docs://St George Hospital Stage 3 - Main Works/SGHS3-AR-MO-300/MAIN.rvt



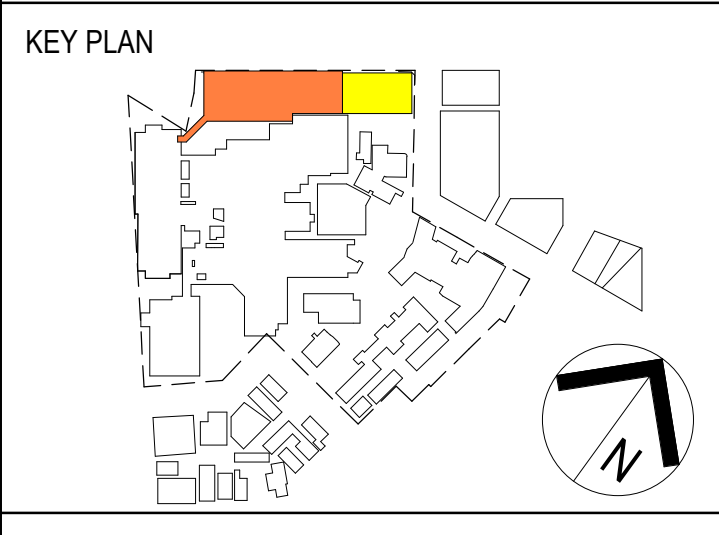
REV	DATE	AMENDMENT
6	31.07.23	ISSUED FOR MOD 2
5	11.07.23	ISSUED FOR MOD 2
4	28.04.22	ISSUED FOR SDA
3	01.11.21	FINAL CONCEPT ISSUE
2	13.10.21	CONCEPT DESIGN - FROZEN ISSUE
1	14.09.21	CONCEPT DESIGN

NOTES

1. DO NOT SCALE DRAWINGS. WRITTEN DIMENSIONS GOVERN.
2. ALL DIMENSIONS ARE IN MILLIMETRES UNLESS NOTED OTHERWISE.
3. ALL DIMENSIONS SHALL BE VERIFIED ON SITE BEFORE PROCEEDING WITH THE WORK. JACOBS SHALL BE NOTIFIED IN WRITING OF ANY DISCREPANCIES.
4. THIS DRAWING MUST BE READ IN CONJUNCTION WITH ALL RELEVANT CONTRACTS, SPECIFICATIONS, REPORTS AND DRAWINGS.
5. ALL DRAWINGS TO BE PRINTED IN COLOUR. DO NOT PHOTOCOPY - PRINT ORIGINAL FROM ELECTRONIC FILE FOR HARD COPY.
6. VARIATIONS TO WORK SHOWN MUST BE BROUGHT TO THE PRINCIPALS ATTENTION AND APPROVED IN WRITING BEFORE PROCEEDING.
7. THIS DRAWING IS COPYRIGHT AND THE PROPERTY OF THE PRINCIPAL AND MUST NOT BE RETAINED, COPIED OR USED WITHOUT THE PERMISSION OF THE AUTHOR.
THIS DRAWING IS AN UNCONTROLLED COPY UNLESS NOTED OTHERWISE.

- GDA
- EXT PLANT
 - PLANT
 - TRAVEL - PUBLIC
 - TRAVEL - STAFF

DRAWING TO BE PRINTED IN COLOUR



SERVICE PROVIDER

Jacobs

Level 7, 177 Pacific Highway,
North Sydney, NSW, 2060
Tel: +61 2 9928 2100
Fax: +61 2 9928 2510
Web: jacobson.com

PROJECT

**ST GEORGE HOSPITAL
STAGE 3**

PROJECT NO.
IA256500

DRAWING TITLE

**DEPARTMENT PLAN -
LEVEL 8**

STATUS

DESIGN DEVELOPMENT

DRAWN
BA

DESIGNED
DG/GA

CHECKED
WB

APPROVED
CY

SCALE @ B1
1 : 200

DRAWING NO.
SGHS3-AR-DG-1208

REVISION
6



Department of Planning
and Environment

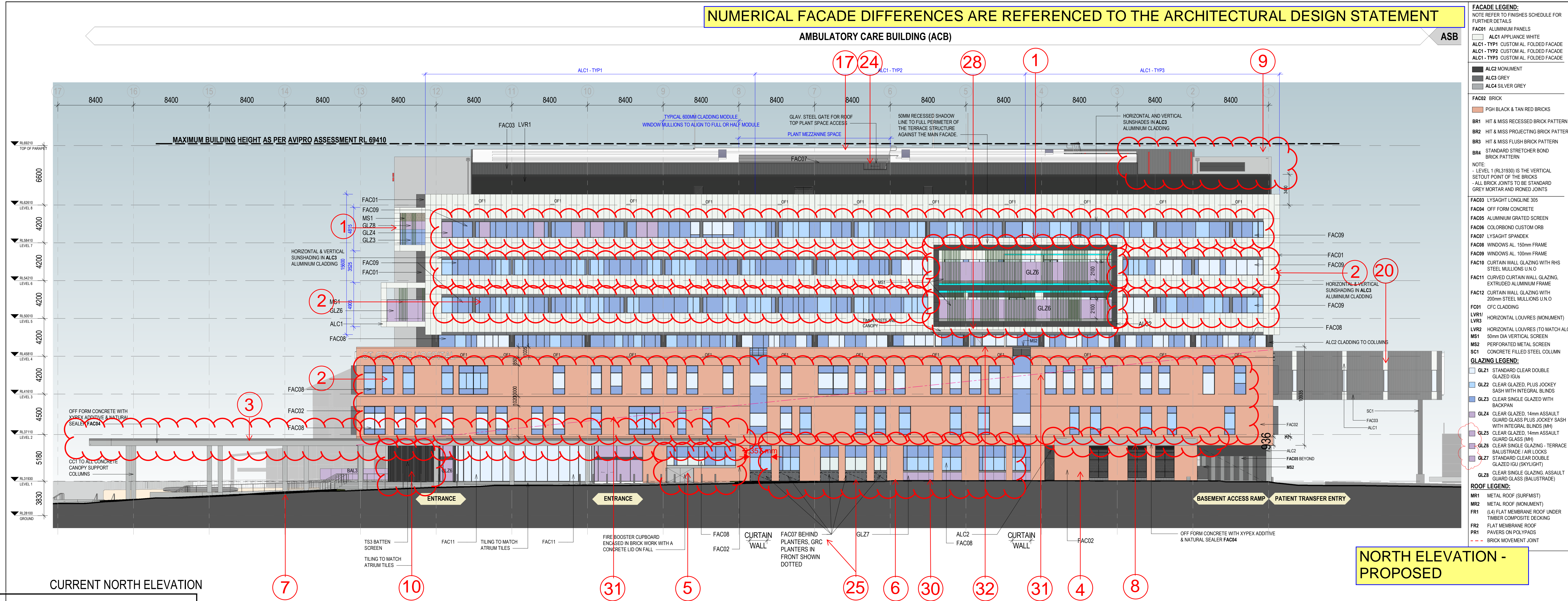
Issued under the Environmental Planning and Assessment Act 1979

Approved Section 4.55(1A) Application No: SSD-39170713-Mod-2
Granted: 16 November 2023 Sheet No: 5 of 9 Signed: PN

NUMERICAL FACADE DIFFERENCES ARE REFERENCED TO THE ARCHITECTURAL DESIGN STATEMENT

AMBULATORY CARE BUILDING (ACB)

ASB



REVISIONS		
REV	DATE	AMENDMENT
5	13.10.23	ISSUED FOR MOD 2
4	15.09.23	ISSUED FOR MOD 2
3	07.09.23	ISSUED FOR MOD 2
2	31.07.23	ISSUED FOR MOD 2
1	11.07.23	ISSUED FOR MOD 2

NOTES

1. DO NOT SCALE DRAWINGS. WRITTEN DIMENSIONS GOVERN.
2. ALL DIMENSIONS ARE IN MILLIMETRES UNLESS NOTED OTHERWISE.
3. ALL DIMENSIONS SHALL BE VERIFIED ON SITE BEFORE PROCEEDING WITH THE WORK.
4. THIS DRAWING MUST BE READ IN CONJUNCTION WITH ALL RELEVANT CONTRACTS, SPECIFICATIONS, REPORTS AND DRAWINGS.
5. ALL DRAWINGS TO BE PRINTED IN COLOUR. DO NOT PHOTOCOPY - PRINT ORIGINAL FROM ELECTRONIC FILE FOR HARD COPY.
6. VARIATIONS TO WORK SHOWN MUST BE BROUGHT TO THE PRINCIPAL'S ATTENTION AND APPROVED IN WRITING BEFORE PROCEEDING.
7. THIS DRAWING IS COPYRIGHT AND THE PROPERTY OF THE PRINCIPAL AND MUST NOT BE REPRODUCED, COPIED OR USED WITHOUT THE PERMISSION OF THE AUTHOR.
8. THIS DRAWING IS AN UNCONTROLLED COPY UNLESS NOTED OTHERWISE.

GENERAL NOTES

- ALL DRAWINGS TO BE PRINTED AND READ IN COLOUR.
- COORDINATION AND ADJUSTMENT OF FINAL WINDOW AND DOOR LOCATIONS TO BE CO-ORDINATED WITH FINAL INTERNAL FITOUT.
- WEEPHOLES TO BE SET UNDER MAXIMUM SPACING ALLOWANCE TO STANDARDS AND SET EVENLY ALONG THE FACADE OF EACH PODIUM BLOCK AND TO BE SET EVENLY OVER WINDOWS.
- REFER TO FINISHES SCHEDULE SGH3-AR-DG-9103 FOR FACADE AND EXTERIOR SPECIFICATIONS.
- REFER TO DRAWING NUMBER TSS & 7736 FOR ALUMINIUM CLADDING AND BRICK FENESTRATION DETAIL.
- ALL FIXINGS AND DETAILS TO FACADE TO BE COORDINATED WITH THE FACADE ENGINEER.

GLAZING LEGEND:

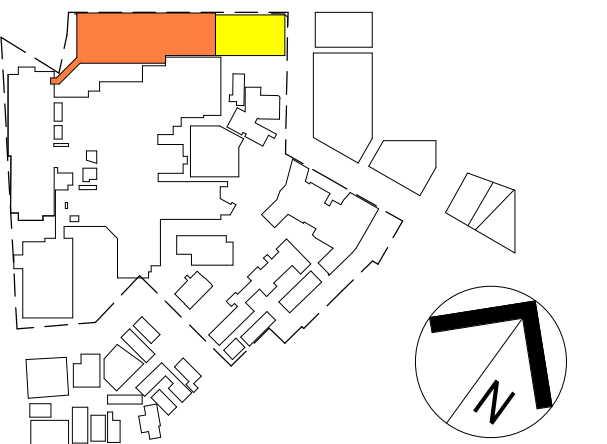
GLZ1	STANDARD CLEAR DOUBLE GLAZED IGU
GLZ2	CLEAR GLAZED, PLUS JOCKEY SASH WITH INTEGRAL BLINDS
GLZ3	CLEAR SINGLE GLAZED WITH BACKPAN
GLZ4	CLEAR GLAZED, 14mm ASSAULT GUARD GLASS PLUS JOCKEY SASH WITH INTEGRAL BLINDS (MH)
GLZ5	CLEAR GLAZED, 14mm ASSAULT GUARD GLASS (MH)
GLZ6	CLEAR SINGLE GLAZING - TERRACE BALUSTRADE / AIR LOCKS
GLZ7	STANDARD CLEAR DOUBLE GLAZED IGU (BRIGHT)
GLZ8	CLEAR SINGLE GLAZING ASSAULT GUARD GLASS (BALUSTRADE)

ROOF LEGEND:

MR1	METAL ROOF (SURF/MST)
MR2	METAL ROOF (MONUMENT)
FR1	(L4) FLAT MEMBRANE ROOF UNDER TIMBER COMPOSITE DECKING
FR2	FLAT MEMBRANE ROOF PAVERS ON POLYPROPYLENE
PR1	BRICK MOVEMENT JOINT

DRAWING TO BE PRINTED IN COLOUR

KEY PLAN



IT



SERVICE PROVIDER

Jacobs

Level 7, 177 Pacific Highway,
North Sydney, NSW, 2060
Tel: +61 2 9928 2100
Fax: +61 2 9928 2510
Web: jacobs.com

PROJECT
**ST GEORGE HOSPITAL
STAGE 3**

PROJECT NO.
IA256500

DRAWING TITLE
**NORTH ELEVATION -
SSDA COMPARISON**

STATUS

FOR INFORMATION

DRAWN
BA/MMW

DESIGNED
JS/GA

CHECKED
WB

APPROVED
CY

SCALE @ B1
1 : 200

DRAWING NO.
SGH3-AR-DG-4021

REVISION
5

NUMERICAL FACADE DIFFERENCES ARE REFERENCED TO THE ARCHITECTURAL DESIGN STATEMENT

**NORTH ELEVATION -
APPROVED**

**Department of Planning
and Environment**

Issued under the *Environmental Planning and Assessment Act 1979*

Approved Section 4.55(1A) Application No: SSD-39170713-Mod-2

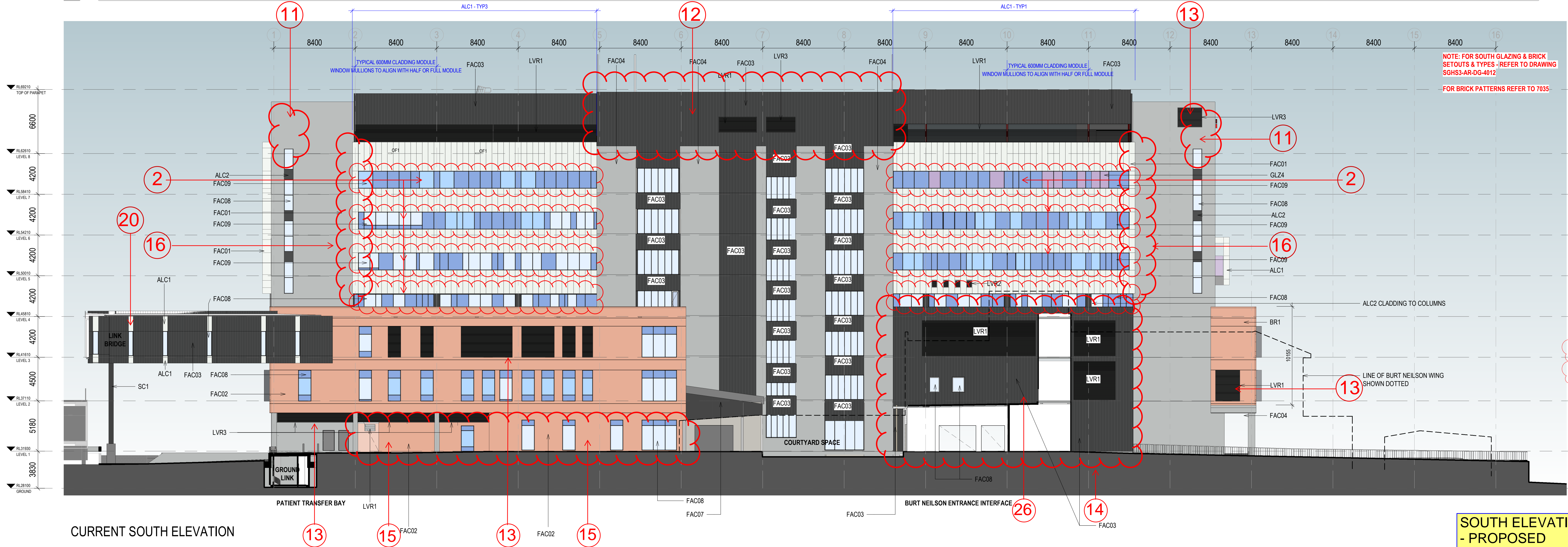
Granted: 16 November 2023 Sheet No: 6 of 9 Signed: PN

Autodesk Docs:US:St George Hospital Stage 3 - Main Works:SGH3-AR-DG-4021MAIN.rvt

13/10/2023 3:50:01 PM

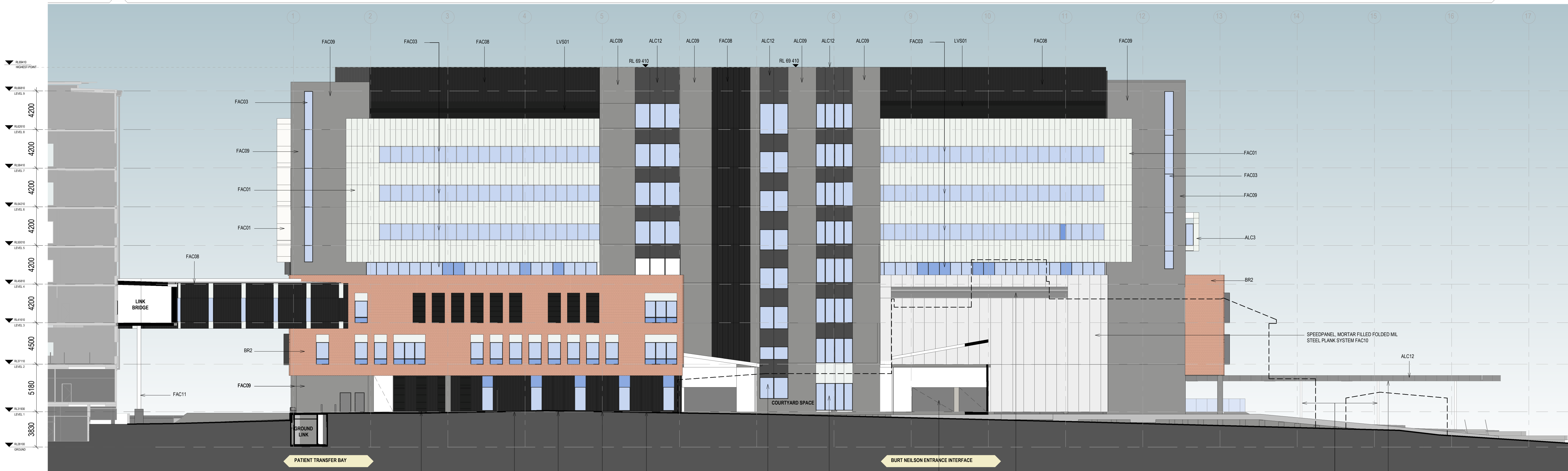
ASB

AMBULATORY CARE BUILDING (ACB)



STAGE 2 ASB

AMBULATORY CARE BUILDING (ACB)



FACADE LEGEND:		
NOTE: REFER TO FINISHES SCHEDULE FOR FURTHER DETAILS		
FAC01 ALUMINIUM PANELS		
ALC1 APPLIANCE WHITE		
ALC1-TYP1 CUSTOM AL FOLDED FACADE		
ALC1-TYP2 CUSTOM AL FOLDED FACADE		
ALC1-TYP3 CUSTOM AL FOLDED FACADE		
ALC2 MONUMENT		
ALC3 GREY		
ALC4 SILVER GREY		
FAC02 BRICK		
BR1 HIT & MISS RECESSED BRICK PATTERN		
BR2 HIT & MISS PROJECTING BRICK PATTERN		
BR3 HT & MISS FLUSH BRICK PATTERN		
BR4 STANDARD STRETCHER BOND BRICK PATTERN		
NOTE:		
- LEVEL 1 (RL3190) IS THE VERTICAL SETOUT POINT OF THE BRICKS		
- ALL BRICK JOINTS TO BE STANDARD GREY MORTAR AND IRONED JOINTS		
- VARIATIONS TO WORK SHOWN MUST BE BROUGHT TO THE PRINCIPAL ATTENTION AND APPROVED IN WRITING BEFORE PROCEEDING		
- THIS DRAWING IS COPYRIGHT AND THE PROPERTY OF THE PRINCIPAL AND MUST NOT BE REPRODUCED, COPIED OR USED WITHOUT THE PERMISSION OF THE AUTHOR		
- THIS DRAWING IS AN UNCONTROLLED COPY UNLESS NOTED OTHERWISE		
FAC03 LYSAGHT LONGLINE 305		
FAC04 OFF FORM CONCRETE		
FAC05 ALUMINIUM GRATED SCREEN		
FAC06 COLORBOND CUSTOM ORB		
FAC07 LYSAGHT SPANDEK		
FAC08 WINDOWS AL 10mm FRAME		
FAC09 WINDOWS AL 10mm FRAME		
FAC10 CURTAIN WALL GLAZING WITH RHS STEEL MULLIONS U/D		
FAC11 CURVED CURTAIN WALL GLAZING, EXTRUDED ALUMINIUM FRAME		
FAC12 CURTAIN WALL GLAZING WITH 200mm STEEL MULLIONS U/D		
FAC13 CFC CLADDING		
LVR1 HORIZONTAL LOUVRES (MONUMENT)		
LVR2 HORIZONTAL LOUVRES (TO MATCH ALC1)		
MS1 50mm DIA VERTICAL SCREEN		
MS2 PERFORATED METAL SCREEN		
SC1 CONCRETE FILLED STEEL COLUMN		
GLAZING LEGEND:		
GLZ1 STANDARD CLEAR DOUBLE GLAZED IGU		
GLZ2 CLEAR GLAZED, PLUS JOCKEY SASH WITH INTEGRAL BLINDS		
GLZ3 CLEAR SINGLE GLAZED WITH BACKPAN		
GLZ4 CLEAR GLAZED, 14mm ASSAULT GUARD GLASS PLUS JOCKEY SASH WITH INTEGRAL BLINDS (M)		
GLZ5 CLEAR GLAZED, 14mm ASSAULT GUARD GLASS (M)		
GLZ6 CLEAR SINGLE GLAZING - TERRACE BALUSTRADE / AIR LOCKS		
GLZ7 STANDARD CLEAR DOUBLE GLAZED IGU (BRIGHT)		
GLZ8 CLEAR SINGLE GLAZING ASSAULT GUARD GLASS (BALUSTRADE)		
ROOF LEGEND:		
MR1 METAL ROOF (SURFMASTER)		
MR2 METAL ROOF (MONUMENT)		
FR1 (L4) FLAT MEMBRANE ROOF UNDER TIMBER COMPOSITE DECKING		
FR2 FLAT MEMBRANE ROOF PAVES ON POLYPYRUS		
--- BRICK MOVEMENT JOINT		

NOTES

1. DO NOT SCALE DRAWINGS. WRITTEN DIMENSIONS GOVERN.
2. ALL DIMENSIONS ARE IN MILLIMETRES UNLESS NOTED OTHERWISE.
3. ALL DIMENSIONS SHALL BE VERIFIED ON SITE BEFORE PROCEEDING WITH THE WORK.
4. THIS DRAWING MUST BE READ IN CONJUNCTION WITH ALL RELEVANT CONTRACTS, SPECIFICATIONS, REPORTS AND DRAWINGS.
5. ALL DRAWINGS TO BE PRINTED IN COLOUR. DO NOT PHOTOCOPY - PRINT ORIGINAL FROM ELECTRONIC FILE FOR HARD COPY.
6. VARIATIONS TO WORK SHOWN MUST BE BROUGHT TO THE PRINCIPAL ATTENTION AND APPROVED IN WRITING BEFORE PROCEEDING.
7. THIS DRAWING IS COPYRIGHT AND THE PROPERTY OF THE PRINCIPAL AND MUST NOT BE REPRODUCED, COPIED OR USED WITHOUT THE PERMISSION OF THE AUTHOR.
8. THIS DRAWING IS AN UNCONTROLLED COPY UNLESS NOTED OTHERWISE.

GENERAL NOTES

- ALL DRAWINGS TO BE PRINTED AND READ IN COLOUR.
- COORDINATION AND ADJUSTMENT OF FINAL WINDOW AND DOOR MULLION LOCATIONS TO BE CO-ORDINATED WITH FINAL INTERNAL FITOUT.
- ALLOWANCE TO STANDARDS AND SET EVENLY ALONG THE FACADE OF EACH PODIUM BLOCK AND TO BE SET EVENLY OVER WINDOWS.
- REFER TO FINISHES SCHEDULE SGHS-AR-DG-9103 FOR FACADE AND EXTERIOR SPECIFICATIONS.
- REFER TO DRAWING NUMBER 7035 & 7036 FOR ALUMINIUM CLADDING AND BRICK PENETRATION DETAIL.
- ALL FIXINGS AND DETAILS TO FACADE TO BE COORDINATED WITH THE FACADE ENGINEER.

DRAWING TO BE PRINTED IN COLOUR

KEY PLAN



CLIENT



SERVICE PROVIDER

Jacobs

Level 7, 177 Pacific Highway,
North Sydney, NSW, 2060
Tel: +61 2 9928 2100
Fax: +61 2 9928 2510
Web: jacobs.com

PROJECT
ST GEORGE HOSPITAL
STAGE 3

PROJECT NO.
IA256500

DRAWING TITLE
SOUTH ELEVATION -
SSDA COMPARISON

STATUS

FOR INFORMATION

DRAWN
BA/MW

DESIGNED
JS/GA

CHECKED
WB

APPROVED
CY

SCALE @ B1
1 : 200

DRAWING NO.
SGHS3-AR-DG-4022

REVISION
5



Department of Planning
and Environment

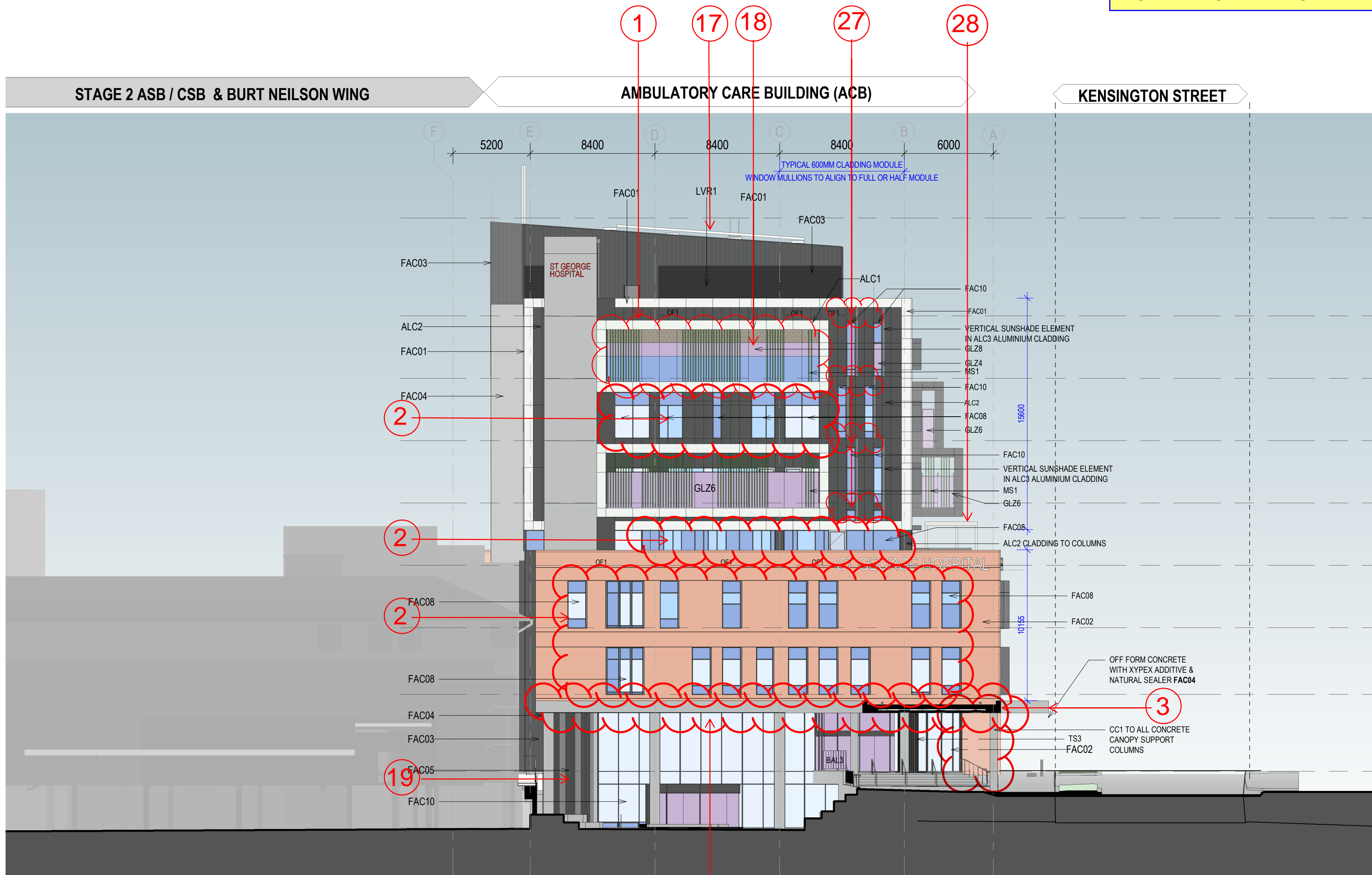
Issued under the Environmental Planning and Assessment Act 1979

Approved Section 4.55(1A) Application No: SSD-39170713-Mod-2

Granted: 16 November 2023 Sheet No: 7 of 9 Signed: PN

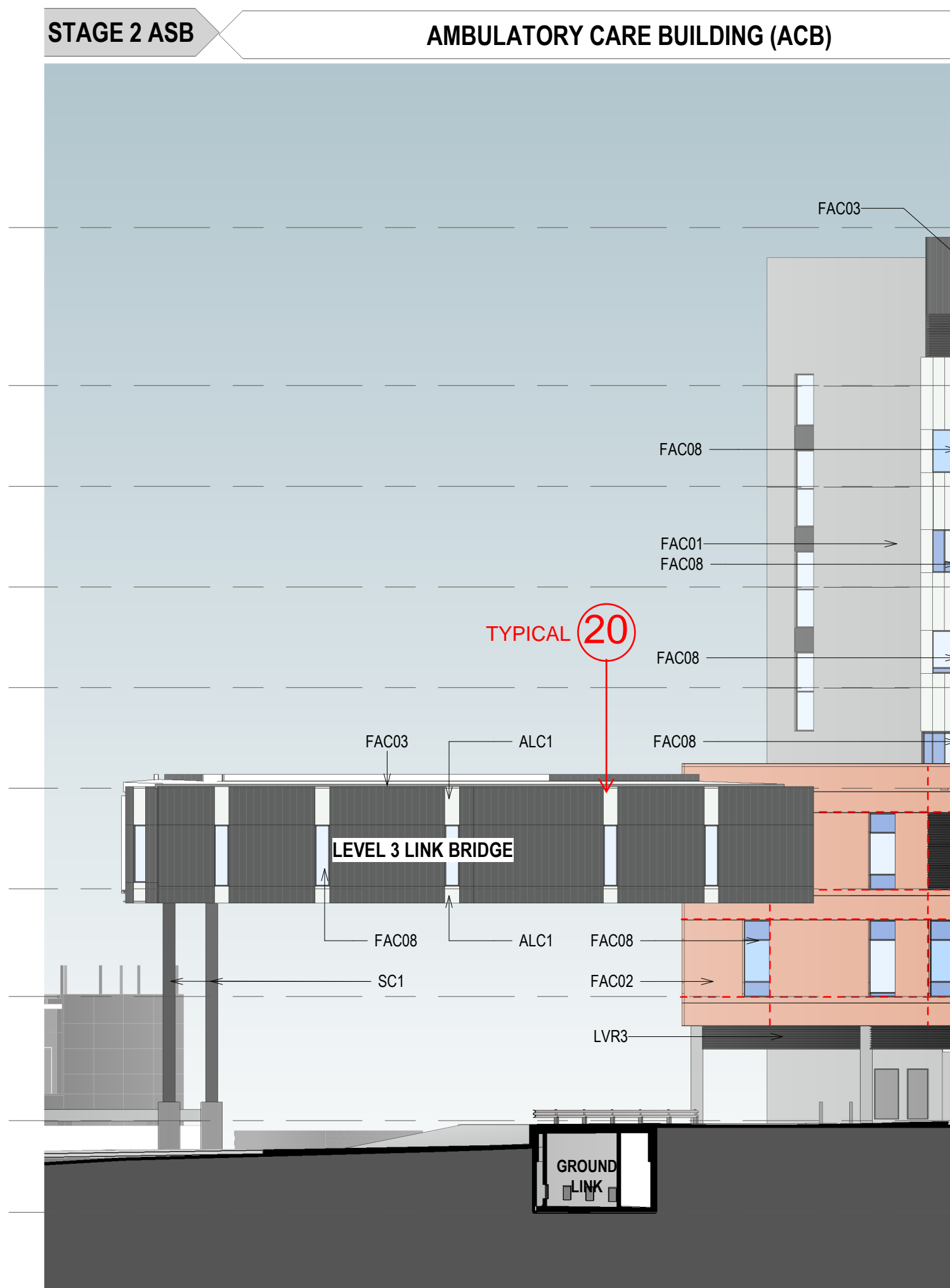
SOUTH ELEVATION
- APPROVED

NUMERICAL FACADE DIFFERENCES ARE REFERENCED TO THE ARCHITECTURAL DESIGN STATEMENT



CURRENT EAST ELEVATION

EAST ELEVATION
- PROPOSED



CURRENT LINK BRIDGE S

LINK BRIDGE SOUTH ELEVATION
- PROPOSED

FACADE LEGEND:	
NOTE: REFER TO FINISHES SCHEDULE FOR FURTHER DETAILS	
FAC01	ALUMINIUM PANELS
ALC1	APPLIANCE WHITE
ALC1-TYP1	CUSTOM AL. FOLDED FACADE
ALC1-TYP2	CUSTOM AL. FOLDED FACADE
ALC1-TYP3	CUSTOM AL. FOLDED FACADE
ALC2	MONUMENT
ALC3	GREY
ALC4	SILVER GREY
FAC02	BRICK
BR1	HT & MISS RECESSED BRICK PATTERN
BR2	HT & MISS PROJECTING BRICK PATTERN
BR3	HT & MISS FLUSH BRICK PATTERN
BR4	STANDARD STRETCHER BOND BRICK PATTERN
FAC03	LYSAGHT LONGLINE 305
FAC04	OFF FORM CONCRETE
FAC05	ALUMINIUM GRATED SCREEN
FAC06	COLORBOND CUSTOM ORB
FAC07	LYSAGHT SPANDEK
FAC08	WINDOWS AL. 150mm FRAME
FAC09	WINDOWS AL. 100mm FRAME
FAC10	CURTAIN WALL GLAZING WITH RHS STEEL MULLIONS U.N.O
FAC11	CURTAIN WALL GLAZING WITH RHS STEEL MULLIONS U.N.O
FAC12	CURTAIN WALL GLAZING WITH 200mm STEEL MULLIONS U.N.O
FAC13	CFC CLADDING
LVR1	HORIZONTAL LOUVRES (TO MATCH ALC1)
LVR2	HORIZONTAL LOUVRES (TO MATCH ALC1)
MS1	50mm DIA VERTICAL SCREEN
MS2	PERFORATED METAL SCREEN
SC1	CONCRETE FILLED STEEL COLUMN

NOTES	
1	DO NOT SCALE DRAWINGS. WRITTEN DIMENSIONS GOVERN.
2	ALL DIMENSIONS ARE IN MILLIMETRES UNLESS NOTED OTHERWISE.
3	ALL DIMENSIONS SHALL BE VERIFIED ON SITE BEFORE PROCEEDING WITH THE WORK.
4	JACOBS SHALL BE NOTIFIED IN WRITING OF ANY DISCREPANCIES.
5	THIS DRAWING MUST BE READ IN CONJUNCTION WITH ALL RELEVANT CONTRACTS, SPECIFICATIONS, REPORTS AND DRAWINGS.
6	VARIATIONS TO WORK SHOWN MUST BE BROUGHT TO THE PRINCIPALS ATTENTION AND APPROVED IN WRITING BEFORE PROCEEDING.
7	THIS DRAWING IS COPYRIGHT AND THE PROPERTY OF THE PRINCIPAL AND MUST NOT BE REPRODUCED, COPIED OR USED WITHOUT THE PERMISSION OF THE AUTHOR.
THIS DRAWING IS AN UNCONTROLLED COPY UNLESS NOTED OTHERWISE.	

GENERAL NOTES	
•	ALL DRAWINGS TO BE PRINTED AND READ IN COLOUR
•	COORDINATION AND ADJUSTMENT OF FINAL WINDOW AND DOOR MULLION LOCATIONS TO BE CO-ORDINATED WITH FINAL INTERNAL FITOUT
•	WEEPHOLES TO BE SET UNDER MAXIMUM SPACING ALLOWANCE TO STANDARDS AND SET EVENLY ALONG THE FACADE OF EACH PODIUM BLOCK AND TO BE SET EVENLY OVER WINDOWS
•	REFER TO FINISHES SCHEDULE SGHS-AR-DG-9103 FOR FACADE AND EXTERIOR SPECIFICATIONS
•	REFER TO DRAWING NUMBER T05 & T06 FOR ALUMINIUM CLADDING AND BRICK FENESTRATION DETAIL
•	ALL FIXINGS AND DETAILS TO FACADE TO BE COORDINATED WITH THE FACADE ENGINEER

GLAZING LEGEND:	
GL21	STANDARD CLEAR DOUBLE GLAZED IGU
GL22	CLEAR GLAZED, PLUS JOCKEY SASH WITH INTEGRAL BLINDS
GL23	CLEAR SINGLE GLAZED WITH BACKPAN
GL24	CLEAR GLAZED, 14mm ASSAULT GUARD GLASS PLUS JOCKEY SASH WITH INTEGRAL BLINDS (M)
GL25	CLEAR GLAZED, 14mm ASSAULT GUARD GLASS (M)
GL26	CLEAR SINGLE GLAZING - TERRACE BALUSTRADE / AIR LOCKS
GL27	STANDARD CLEAR DOUBLE GLAZED IGU (SIGHTLIGHT)
GL28	CLEAR SINGLE GLAZING ASSAULT GUARD GLASS (BALUSTRADE)

ROOF LEGEND:	
MR1	METAL ROOF (SURF/MST)
MR2	METAL ROOF (MONUMENT)
FR1	(L4) FLAT MEMBRANE ROOF UNDER TIMBER COMPOSITE DECKING
FR2	FLAT MEMBRANE ROOF PAVERS ON POLYPYRIDS
PR1	FLAT MEMBRANE ROOF PAVERS ON POLYPYRIDS
---	BRICK MOVEMENT JOINT

DRAWING TO BE PRINTED IN COLOUR

KEY PLAN



CLIENT



SERVICE PROVIDER



Level 7, 177 Pacific Highway,
North Sydney, NSW, 2060
Tel: +61 2 9928 2100
Fax: +61 2 9928 2510
Web: jacobs.com

PROJECT
ST GEORGE HOSPITAL
STAGE 3

PROJECT NO.
IA256500

DRAWING TITLE
EAST & LINK SOUTH
ELEVATIONS - SSDA
COMPARISON

STATUS

FOR INFORMATION

DRAWN
BA/MW

DESIGNED
JS/GA

CHECKED
WB

APPROVED
CY

SCALE @ B1
1 : 200

DRAWING NO.
SGHS3-AR-DG-4023

REVISION
5

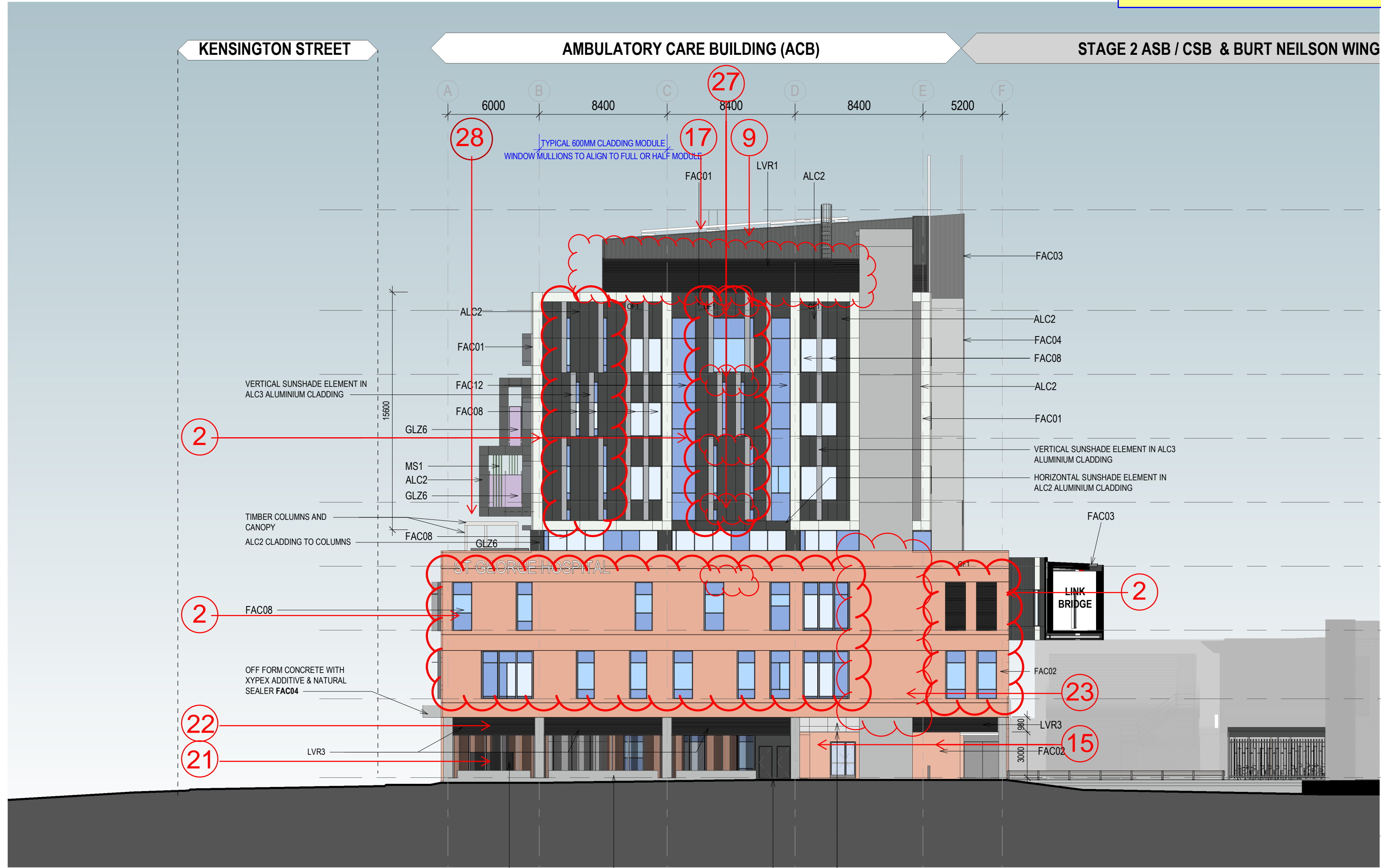


Department of Planning
and Environment

Issued under the Environmental Planning and Assessment Act 1979

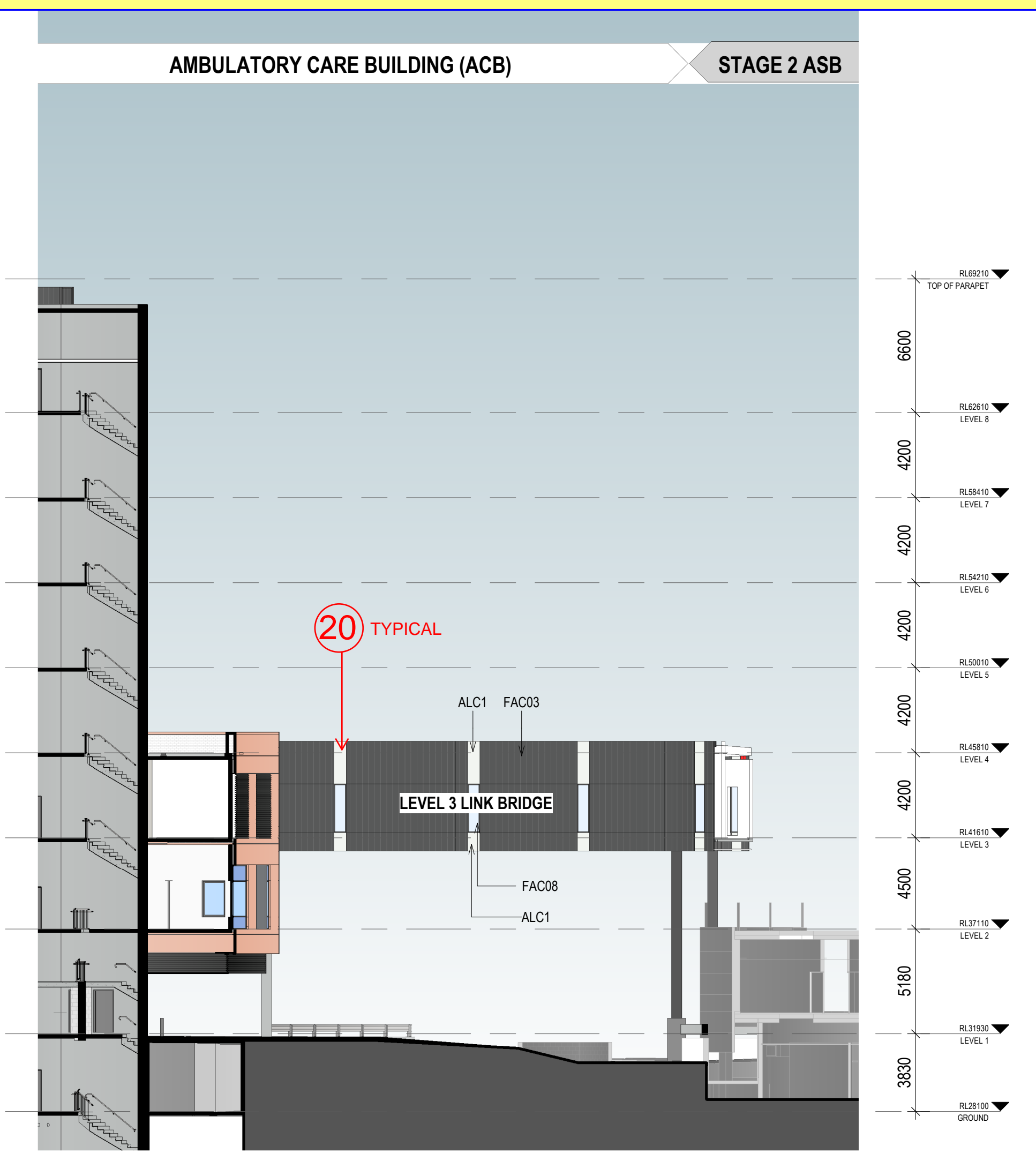
Approved Section 4.55(1A) Application No: SSD-39170713-Mod-2

Granted: 16 November 2023 Sheet No: 8 of 9 Signed: PN



CURRENT WEST ELEVATION

WEST ELEVATION
- PROPOSED



CURRENT LINK BRIDGE NORTH ELEVATION -

LINK BRIDGE NORTH ELEVATION
- PROPOSED

FACADE LEGEND:
NOTE REFER TO FINISHES SCHEDULE FOR FURTHER DETAILS

FAC01	ALUMINIUM PANELS
ALC1	APPLIANCE WHITE
ALC1 - TPY1	CUSTOM AL FOLDED FACADE
ALC1 - TPY2	CUSTOM AL FOLDED FACADE
ALC1 - TPY3	CUSTOM AL FOLDED FACADE
ALC2	MONUMENT
ALC3	GREY
ALC4	SILVER GREY
FAC02	BRICK
BR1	HT & MISS RECESSED BRICK PATTERN
BR2	HT & MISS PROJECTING BRICK PATTERN
BR3	HT & MISS FLUSH BRICK PATTERN
BR4	STANDARD STRETCHER BOND BRICK PATTERN
FAC03	LYSAGHT LONGLINE 305
FAC04	OFF FORM CONCRETE
FAC05	ALUMINIUM GRATED SCREEN
FAC06	COLORBOND CUSTOM ORB
FAC07	LYSAGHT SPANDEX
FAC08	WINDOWS AL 10mm FRAME
FAC09	WINDOWS AL 10mm FRAME
FAC10	CURTAIN WALL GLAZING WITH RHS STEEL MULLIONS U.N.O
FAC11	CURTAIN WALL GLAZING WITH 200mm STEEL MULLIONS U.N.O
FAC12	CURTAIN WALL GLAZING WITH 200mm STEEL MULLIONS U.N.O
FAC13	CURTAIN WALL GLAZING WITH 200mm STEEL MULLIONS U.N.O
FAC14	CURTAIN WALL GLAZING WITH 200mm STEEL MULLIONS U.N.O
FAC15	CURTAIN WALL GLAZING WITH 200mm STEEL MULLIONS U.N.O
FAC16	CURTAIN WALL GLAZING WITH 200mm STEEL MULLIONS U.N.O
FAC17	CURTAIN WALL GLAZING WITH 200mm STEEL MULLIONS U.N.O
FAC18	CURTAIN WALL GLAZING WITH 200mm STEEL MULLIONS U.N.O
FAC19	CURTAIN WALL GLAZING WITH 200mm STEEL MULLIONS U.N.O
FAC20	CURTAIN WALL GLAZING WITH 200mm STEEL MULLIONS U.N.O
FAC21	CURTAIN WALL GLAZING WITH 200mm STEEL MULLIONS U.N.O
FAC22	CURTAIN WALL GLAZING WITH 200mm STEEL MULLIONS U.N.O
FAC23	CURTAIN WALL GLAZING WITH 200mm STEEL MULLIONS U.N.O
FAC24	CURTAIN WALL GLAZING WITH 200mm STEEL MULLIONS U.N.O
FAC25	CURTAIN WALL GLAZING WITH 200mm STEEL MULLIONS U.N.O
FAC26	CURTAIN WALL GLAZING WITH 200mm STEEL MULLIONS U.N.O
FAC27	CURTAIN WALL GLAZING WITH 200mm STEEL MULLIONS U.N.O
FAC28	CURTAIN WALL GLAZING WITH 200mm STEEL MULLIONS U.N.O
FAC29	CURTAIN WALL GLAZING WITH 200mm STEEL MULLIONS U.N.O
FAC30	CURTAIN WALL GLAZING WITH 200mm STEEL MULLIONS U.N.O
FAC31	CURTAIN WALL GLAZING WITH 200mm STEEL MULLIONS U.N.O
FAC32	CURTAIN WALL GLAZING WITH 200mm STEEL MULLIONS U.N.O
FAC33	CURTAIN WALL GLAZING WITH 200mm STEEL MULLIONS U.N.O
FAC34	CURTAIN WALL GLAZING WITH 200mm STEEL MULLIONS U.N.O
FAC35	CURTAIN WALL GLAZING WITH 200mm STEEL MULLIONS U.N.O
FAC36	CURTAIN WALL GLAZING WITH 200mm STEEL MULLIONS U.N.O
FAC37	CURTAIN WALL GLAZING WITH 200mm STEEL MULLIONS U.N.O
FAC38	CURTAIN WALL GLAZING WITH 200mm STEEL MULLIONS U.N.O
FAC39	CURTAIN WALL GLAZING WITH 200mm STEEL MULLIONS U.N.O
FAC40	CURTAIN WALL GLAZING WITH 200mm STEEL MULLIONS U.N.O
FAC41	CURTAIN WALL GLAZING WITH 200mm STEEL MULLIONS U.N.O
FAC42	CURTAIN WALL GLAZING WITH 200mm STEEL MULLIONS U.N.O
FAC43	CURTAIN WALL GLAZING WITH 200mm STEEL MULLIONS U.N.O
FAC44	CURTAIN WALL GLAZING WITH 200mm STEEL MULLIONS U.N.O
FAC45	CURTAIN WALL GLAZING WITH 200mm STEEL MULLIONS U.N.O
FAC46	CURTAIN WALL GLAZING WITH 200mm STEEL MULLIONS U.N.O
FAC47	CURTAIN WALL GLAZING WITH 200mm STEEL MULLIONS U.N.O
FAC48	CURTAIN WALL GLAZING WITH 200mm STEEL MULLIONS U.N.O
FAC49	CURTAIN WALL GLAZING WITH 200mm STEEL MULLIONS U.N.O
FAC50	CURTAIN WALL GLAZING WITH 200mm STEEL MULLIONS U.N.O
FAC51	CURTAIN WALL GLAZING WITH 200mm STEEL MULLIONS U.N.O
FAC52	CURTAIN WALL GLAZING WITH 200mm STEEL MULLIONS U.N.O
FAC53	CURTAIN WALL GLAZING WITH 200mm STEEL MULLIONS U.N.O
FAC54	CURTAIN WALL GLAZING WITH 200mm STEEL MULLIONS U.N.O
FAC55	CURTAIN WALL GLAZING WITH 200mm STEEL MULLIONS U.N.O
FAC56	CURTAIN WALL GLAZING WITH 200mm STEEL MULLIONS U.N.O
FAC57	CURTAIN WALL GLAZING WITH 200mm STEEL MULLIONS U.N.O
FAC58	CURTAIN WALL GLAZING WITH 200mm STEEL MULLIONS U.N.O
FAC59	CURTAIN WALL GLAZING WITH 200mm STEEL MULLIONS U.N.O
FAC60	CURTAIN WALL GLAZING WITH 200mm STEEL MULLIONS U.N.O
FAC61	CURTAIN WALL GLAZING WITH 200mm STEEL MULLIONS U.N.O
FAC62	CURTAIN WALL GLAZING WITH 200mm STEEL MULLIONS U.N.O
FAC63	CURTAIN WALL GLAZING WITH 200mm STEEL MULLIONS U.N.O
FAC64	CURTAIN WALL GLAZING WITH 200mm STEEL MULLIONS U.N.O
FAC65	CURTAIN WALL GLAZING WITH 200mm STEEL MULLIONS U.N.O
FAC66	CURTAIN WALL GLAZING WITH 200mm STEEL MULLIONS U.N.O
FAC67	CURTAIN WALL GLAZING WITH 200mm STEEL MULLIONS U.N.O
FAC68	CURTAIN WALL GLAZING WITH 200mm STEEL MULLIONS U.N.O
FAC69	CURTAIN WALL GLAZING WITH 200mm STEEL MULLIONS U.N.O
FAC70	CURTAIN WALL GLAZING WITH 200mm STEEL MULLIONS U.N.O
FAC71	CURTAIN WALL GLAZING WITH 200mm STEEL MULLIONS U.N.O
FAC72	CURTAIN WALL GLAZING WITH 200mm STEEL MULLIONS U.N.O
FAC73	CURTAIN WALL GLAZING WITH 200mm STEEL MULLIONS U.N.O
FAC74	CURTAIN WALL GLAZING WITH 200mm STEEL MULLIONS U.N.O
FAC75	CURTAIN WALL GLAZING WITH 200mm STEEL MULLIONS U.N.O
FAC76	CURTAIN WALL GLAZING WITH 200mm STEEL MULLIONS U.N.O
FAC77	CURTAIN WALL GLAZING WITH 200mm STEEL MULLIONS U.N.O
FAC78	CURTAIN WALL GLAZING WITH 200mm STEEL MULLIONS U.N.O
FAC79	CURTAIN WALL GLAZING WITH 200mm STEEL MULLIONS U.N.O
FAC80	CURTAIN WALL GLAZING WITH 200mm STEEL MULLIONS U.N.O
FAC81	CURTAIN WALL GLAZING WITH 200mm STEEL MULLIONS U.N.O
FAC82	CURTAIN WALL GLAZING WITH 200mm STEEL MULLIONS U.N.O
FAC83	CURTAIN WALL GLAZING WITH 200mm STEEL MULLIONS U.N.O
FAC84	CURTAIN WALL GLAZING WITH 200mm STEEL MULLIONS U.N.O
FAC85	CURTAIN WALL GLAZING WITH 200mm STEEL MULLIONS U.N.O
FAC86	CURTAIN WALL GLAZING WITH 200mm STEEL MULLIONS U.N.O
FAC87	CURTAIN WALL GLAZING WITH 200mm STEEL MULLIONS U.N.O
FAC88	CURTAIN WALL GLAZING WITH 200mm STEEL MULLIONS U.N.O
FAC89	CURTAIN WALL GLAZING WITH 200mm STEEL MULLIONS U.N.O
FAC90	CURTAIN WALL GLAZING WITH 200mm STEEL MULLIONS U.N.O
FAC91	CURTAIN WALL GLAZING WITH 200mm STEEL MULLIONS U.N.O
FAC92	CURTAIN WALL GLAZING WITH 200mm STEEL MULLIONS U.N.O
FAC93	CURTAIN WALL GLAZING WITH 200mm STEEL MULLIONS U.N.O
FAC94	CURTAIN WALL GLAZING WITH 200mm STEEL MULLIONS U.N.O
FAC95	CURTAIN WALL GLAZING WITH 200mm STEEL MULLIONS U.N.O
FAC96	CURTAIN WALL GLAZING WITH 200mm STEEL MULLIONS U.N.O
FAC97	CURTAIN WALL GLAZING WITH 200mm STEEL MULLIONS U.N.O
FAC98	CURTAIN WALL GLAZING WITH 200mm STEEL MULLIONS U.N.O
FAC99	CURTAIN WALL GLAZING WITH 200mm STEEL MULLIONS U.N.O
FAC100	CURTAIN WALL GLAZING WITH 200mm STEEL MULLIONS U.N.O

NOTES

1. DO NOT SCALE DRAWINGS. WRITTEN DIMENSIONS GOVERN.
2. ALL DIMENSIONS ARE IN MILLIMETRES UNLESS NOTED OTHERWISE.
3. ALL DIMENSIONS SHALL BE VERIFIED ON SITE BEFORE PROCEEDING WITH THE WORK. JACOBS SHALL BE NOTIFIED IN WRITING OF ANY DISCREPANCIES.
4. THIS DRAWING MUST BE READ IN CONJUNCTION WITH ALL RELEVANT CONTRACTS, SPECIFICATIONS, REPORTS AND DRAWINGS.
5. ALL DRAWINGS TO BE PRINTED IN COLOUR. DO NOT PHOTOCOPY - PRINT ORIGINAL FROM ELECTRONIC FILE FOR HARD COPY.
6. VARIATIONS TO WORK SHOWN MUST BE BROUGHT TO THE PRINCIPAL'S ATTENTION AND APPROVED IN WRITING BEFORE PROCEEDING.
7. THIS DRAWING IS COPYRIGHT AND THE PROPERTY OF THE PRINCIPAL AND MUST NOT BE REPRODUCED, COPIED OR USED WITHOUT THE PERMISSION OF THE AUTHOR.
8. THIS DRAWING IS AN UNCONTROLLED COPY UNLESS NOTED OTHERWISE.

GENERAL NOTES

- ALL DRAWINGS TO BE PRINTED AND READ IN COLOUR
- COORDINATION AND ADJUSTMENT OF FINAL WINDOW AND DOOR MULLION LOCATIONS TO BE CO-ORDINATED WITH FINAL INTERNAL FITOUT
- WEEDHOLES TO BE SET UNDER MAXIMUM SPACING ALLOWANCE TO STANDARDS AND SET EVENLY ALONG THE FACADE OF EACH PODIUM BLOCK AND TO BE SET EVENLY OVER WINDOWS
- REFER TO FINISHES SCHEDULE SGH3-AR-DG-9103 FOR FACADE AND EXTERIOR SPECIFICATIONS
- REFER TO DRAWING NUMBER T05 & T06 FOR ALUMINIUM CLADDING AND BRICK FENESTRATION DETAIL
- ALL FIXINGS AND DETAILS TO FACADE TO BE CO-ORDINATED WITH THE FACADE ENGINEER

GLAZING LEGEND:

GL21	STANDARD CLEAR DOUBLE GLAZED IGU
GL22	CLEAR GLAZED, PLUS JOCKEY SASH WITH INTEGRAL BLINDS
GL23	CLEAR SINGLE GLAZED WITH BACKPAN
GL24	CLEAR GLAZED, 14mm ASSAULT GUARD GLASS PLUS JOCKEY SASH WITH INTEGRAL BLINDS (M)
GL25	CLEAR GLAZED, 14mm ASSAULT GUARD GLASS (M)
GL26	CLEAR SINGLE GLAZING - TERRACE BALUSTRADE / AIR LOCKS
GL27	STANDARD CLEAR DOUBLE GLAZED IGU (BRIGHT)
GL28	CLEAR SINGLE GLAZING ASSAULT GUARD GLASS (BALUSTRADE)

ROOF LEGEND:

BR1	METAL ROOF (SURF/MST)
BR2	METAL ROOF (MONUMENT)
FR1	(L4) FLAT MEMBRANE ROOF UNDER TIMBER COMPOSITE DECKING
FR2	FLAT MEMBRANE ROOF PAVERS ON POLYPYRUS
FR3	FLAT MEMBRANE ROOF PAVERS ON POLYPYRUS
FR4	FLAT MEMBRANE ROOF PAVERS ON POLYPYRUS

DRAWING TO BE PRINTED IN COLOUR

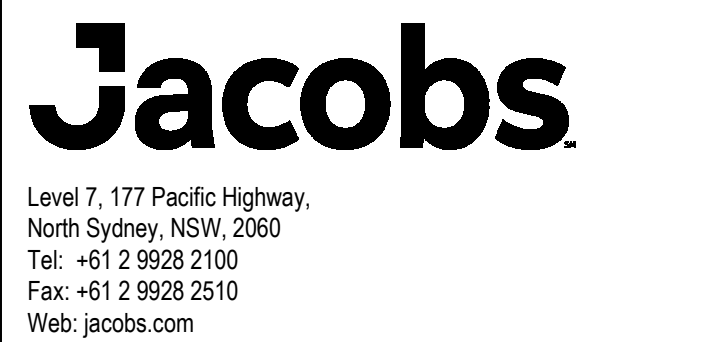
KEY PLAN



CLIENT



SERVICE PROVIDER



PROJECT
ST GEORGE HOSPITAL
STAGE 3

PROJECT NO.
IA256500

DRAWING TITLE
WEST & LINK NORTH
ELEVATION - SSDA
COMPARISON

STATUS
FOR INFORMATION

DRAWN BA/MW	DESIGNED JS/GA
CHECKED WB	APPROVED CY

SCALE @ B1
1 : 200

DRAWING NO.
SGH3-AR-DG-4024

REVISION
5

Department of Planning and Environment

Issued under the Environmental Planning and Assessment Act 1979

Approved Section 4.55(1A) Application No: SSD-39170713-Mod-2

Granted: 16 November 2023 Sheet No: 9 of 9 Signed: PN

4 EL_W_200
1:200

WEST ELEVATION
- APPROVED

6 LINK BRIDGE N ELEVATION
1:200

LINK BRIDGE NORTH ELEVATION
- APPROVED