



New West Wyalong key health worker accommodation ready to welcome staff

Healthcare workers in West Wyalong can now access modern, fit-for-purpose key worker accommodation, with three new units at West Wyalong Health Service established as part of the NSW Government's Key Worker Accommodation (KWA) Program.

West Wyalong is the first of four sites in Murrumbidgee Local Health District to be completed under the KWA Program, which is an exciting milestone.

The units will help attract much needed healthcare staff to the rural area by removing a barrier to finding accommodation for healthcare workers wanting to work at West Wyalong Health Service, meaning recruiting and retaining staff will be easier.

"We look forward to being able to utilise the accommodation to assist in attracting agency staff and new staff members at West Wyalong Hospital," Di Reid, Co-Facility Manager of West Wyalong Health Service said.



The three self-contained units, one of which is accessible, are located on the hospital grounds and provide a safe and comfortable place for healthcare workers.

“It’s great to see the units completed, and we can’t wait to see the first health care workers move in soon and get established,” Jill Ludford, Chief Executive, MLHD said.

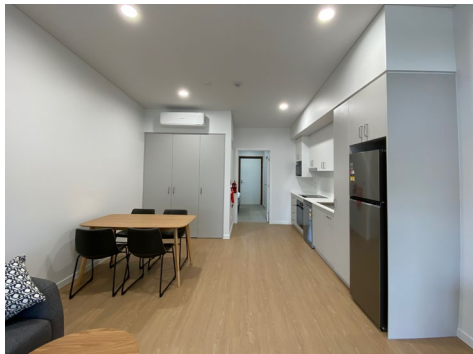
The units are fully furnished, and each includes a well-equipped kitchen, comfortable living/dining area, bedroom with robe, ensuite bathroom and laundry. The units also have their own entry deck, and the area is fully fenced and landscaped.

“I am really impressed by the quality of the accommodation, the inclusions, and the natural light which filters through,” Jill said.

“The units will be a great asset to the health service, especially being on the same site while still providing a home-like environment for the staff living in them”.

MLHD is one of three regional local health districts to benefit from a \$45.3 million investment to deliver accommodation for health workers under the Key Worker Accommodation Program.

Photo gallery of the completed units:



For more information about the KWA Program, contact:

02 8838 8889

HI-KeyWorkerAccommodation@health.nsw.gov.au

hinfra.health.nsw.gov.au