

Project Update

Albury Wodonga Regional Hospital project



May 2025

Artist's impression: Northeast Building from carpark, view from East Street



Early works planning documents on public exhibition

Artist's impression: Northeast Building



The NSW, Victorian and Commonwealth Governments have committed \$558 million to the Albury Wodonga Regional Hospital project, one of the largest regional health projects currently underway in NSW and Victoria.

This project will:

- consolidate complex care on the one site
- deliver more beds, more car parking and access to state-of-the-art facilities
- double the existing floor space of the Albury Hospital Campus
- create a regional health hub with the existing health services on site

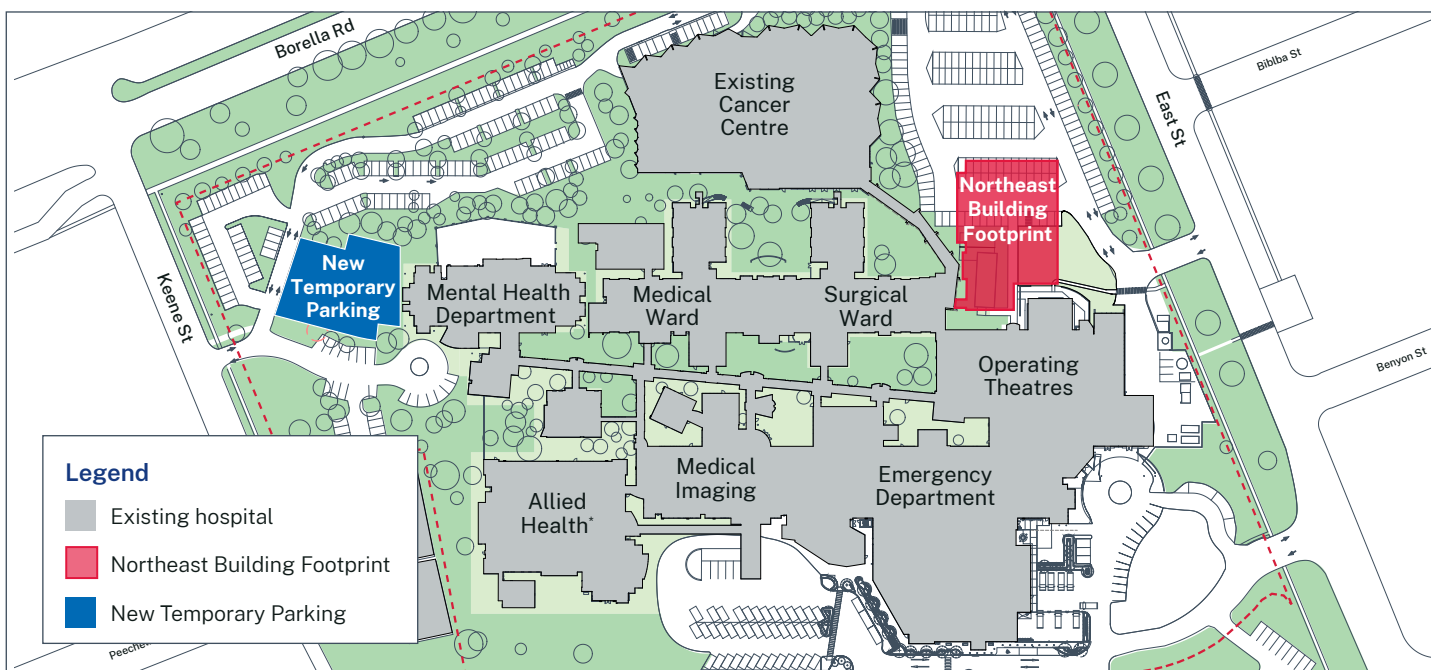
The new Albury Wodonga Regional Hospital will provide enhanced and expanded health care services in contemporary facilities to support Albury, Wodonga and Border communities now and into the future.

The next step – a new Northeast Building

A new two-storey Northeast Building will be the first building delivered as part of the \$558 million dollar investment in the Albury Hospital Campus. On completion, a range of health services currently located in the Allied Health Building will relocate to the Northeast Building to enable the construction of a new multi-storey Clinical Services Building

The Northeast Building has been designed for flexibility offering opportunities to support future expansion of outpatient and administrative functions.

This purpose-built health facility will house allied health, outpatient services including cardiac diagnostics, administrative teams, and Pharmacy. A key feature of the new building includes a link bridge that will connect to the hospital's existing public entry level, enhancing connectivity and improving access to key hospital campus areas including surgical wards and operating theatres.



*Location of new 7-storey Clinical Services Building to be built following services moving to the new Northeast Building

Car parking

As part of the early works, a new temporary car park for staff, patients and visitors will be built to the north of the site to offset the impact of the construction of the new building on existing hospital campus parking.

The temporary car park will be available before any changes are made to existing parking areas.

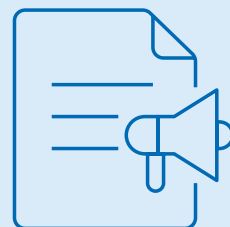
Overall, the project will deliver increased parking across the hospital campus site.

Public Exhibition

The Review of Environmental Factors (REF) planning application documents including Northeast Building designs are now on exhibition for community feedback. The Northeast Building REF has been informed by extensive consultation with health professionals, community, stakeholders and technical specialists such as architects, arborists and traffic assessors. The proposal includes:

- Construction of a 2-storey health services facility called the Northeast Building
- Delivery of a new temporary car park to the northwest of the hospital site
- Landscaping


Public exhibition will be open until 11.59pm 6 June 2025.





Feedback shaping the Northeast Building planning and design


The planning and design of the Northeast Building have been informed by extensive consultation with a range of people including health professionals, the community and technical specialists such as architects, arborists and traffic assessors.




Minimising disruption of services during construction: Services affected by the construction of the Clinical Services Building will be relocated to the Northeast Building to ensure hospital operations continue smoothly.



Car parking: A new temporary car park will offset the impact of the Northeast Building, with spaces available before any changes to existing parking. Once the Clinical Services Building is complete, this area will become part of a larger permanent car park.



Access to nature: Outdoor spaces and natural light have been prioritised.



Value for money: Construction of a permanent building on-site provided the best value for money, delivering a long-term asset for future outpatient and administrative services for the services.



Managing construction impacts

Construction is expected to begin mid-2025, pending planning approval and contractor appointment.

All current health services will remain operational throughout construction. Careful planning continues to focus on minimising disruptions and keeping the community informed of any changes to access. Patient, visitor, staff, and emergency access will always be maintained.

The building contractor is required to minimise dust, noise, and disruption to neighbouring properties and hospital services.

Boosting capacity for Border communities

The Albury Hospital campus will consolidate complex care on one site, which will improve safety for patients, reducing the duplication of services and the need for urgent travel between the Wodonga and Albury campuses.

The transformation of the Albury site will pave the way for the Wodonga campus to transform into a non-emergency care hub for the community.

The project will deliver over 80 additional beds across three new inpatient units in the new Clinical Services Building at the Albury Hospital Campus, on top of the existing inpatient units already in operation.

These new beds are in addition to enhanced maternity and birthing suites, an expanded ICU, increased mental health services, as well as improved ambulatory care, cardiac diagnostics, and allied health therapies.

This transformation will consolidate acute care at the Albury Campus, paving the way for the Wodonga campus to become a dedicated non-emergency care hub. Bed numbers will be finalised as planning progresses.



Project timelines

Northeast Building

April – May 2025	Mid 2025	Mid 2026
Planning documents on public exhibition	Construction expected to start	Construction expected to be completed

Clinical Services Building

Late 2025	Early 2026	Mid-late 2026	2028
Design completion	Planning approvals and construction tender	Construction expected to start	Main works construction expected to be completed



Have Your Say on the Northeast Building

The Northeast Building REF and supporting technical documents will be available from Health Infrastructure’s website from 9am Friday 9 May 2025 until 11:59pm 6 June 2025.

The local community is encouraged to attend one of the following community information sessions and provide feedback related to the environmental impacts of the new Northeast Building via the website:

- Thursday 15 May 2025 Albury West End Plaza Shopping Centre from 12noon to 2.00pm
- Thursday 15 May 2025 Wodonga Plaza from 4.00pm to 6.00pm

Scan the QR code for more information or to provide feedback, or visit: hinfra.health.nsw.gov.au/projects/on-exhibition

For more information about the project and REF planning process, please visit the regularly updated FAQs.

For more information

- T: 02 9978 5444
- E: hi-albury@health.nsw.gov.au
- W: hinfra.health.nsw.gov.au/awrh